



Price

£575,000

Freehold

4x  2x  1x 

**Weston Avenue,
Broadbridge Heath,
West Sussex, RH12**

OVER 60?

Secure this property
for up to **59% less!**

cubitt & west
Helping you move forwards



Main features

- Family home built by Bellway Homes in 2019
- Tanbridge House school catchment
- Lovely open plan kitchen/dining room
- Short drive to Horsham town centre
- No onward chain

Accommodation

GROUND FLOOR

- Entrance Hall
- Cloakroom
- Lounge: 16'11 up to bay x 11'2 at widest point (5.16m x 3.41m)
- Kitchen: 12'3 x 11'1 (3.74m x 3.38m)
- Dining Area: 14'9 x 9'2 (4.50m x 2.80m)

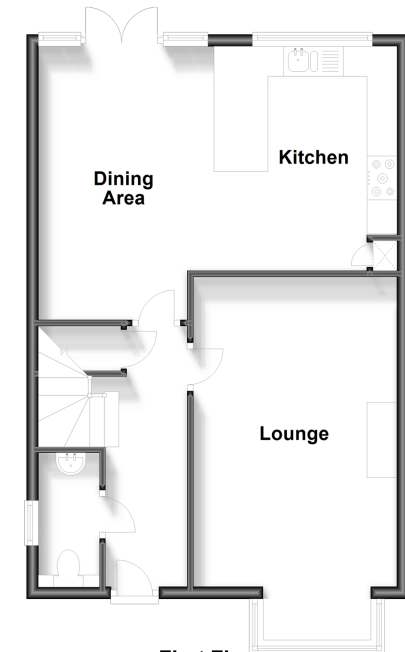
FIRST FLOOR

- Landing
- Bedroom 1: 11'11 x 10'4 into fitted wardrobes (3.63m x 3.15m)
- En Suite Shower Room: 6'9 x 3'10 (2.06m x 1.17m)
- Bedroom 2: 12'5 x 9'6 (3.79m x 2.90m)
- Bedroom 3: 9'11 x 8'1 up to door well (3.02m x 2.47m)
- Bedroom 4: 9'3 x 7'5 up to door well (2.82m x 2.26m)
- Bathroom: 6'8 x 6'3 (2.03m x 1.91m)

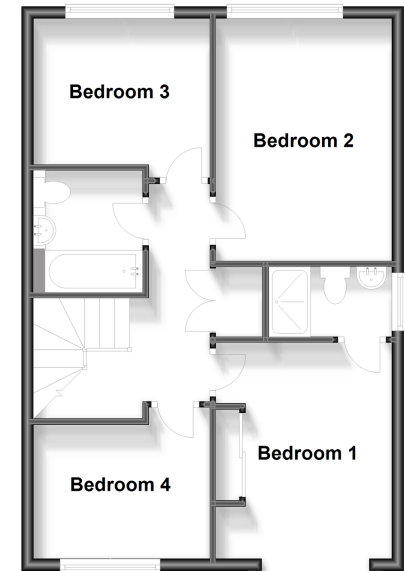
OUTSIDE

- Garage & Driveway
- Front & Rear Gardens

Ground Floor
Approx. 54.9 sq. metres (591.0 sq. feet)



First Floor
Approx. 54.1 sq. metres (582.1 sq. feet)



Call Horsham - 01403 269268 ■ cubittandwest.co.uk

- Legal advice should be taken to verify fixtures/fittings, planning, alterations and/or lease details
- Appliances & services are untested, dimensions are approximate and floor plans are not to scale
- Through a Homewise Home For Life Plan people aged 60+ can secure this property for up to 59% less, by purchasing a Lifetime Lease.



20917397/20240124/RSH/RSH