



Price

£500,000

Freehold

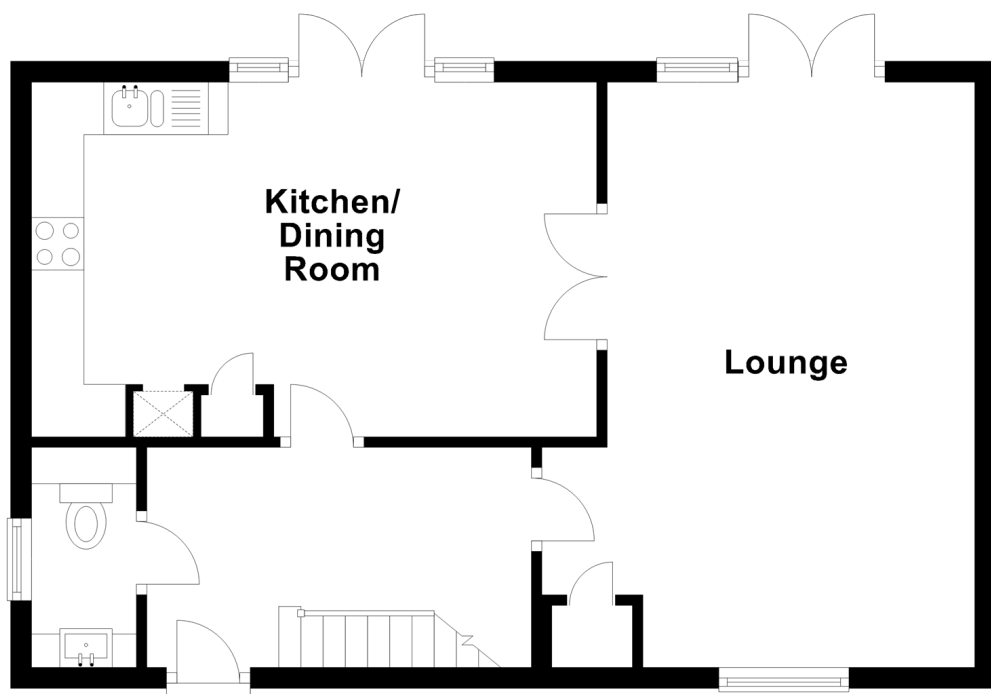
3x  2x  1x 

**Rushy Field, Faygate,
Horsham, West Sussex,
RH12**

cubitt&west
Helping you move forwards

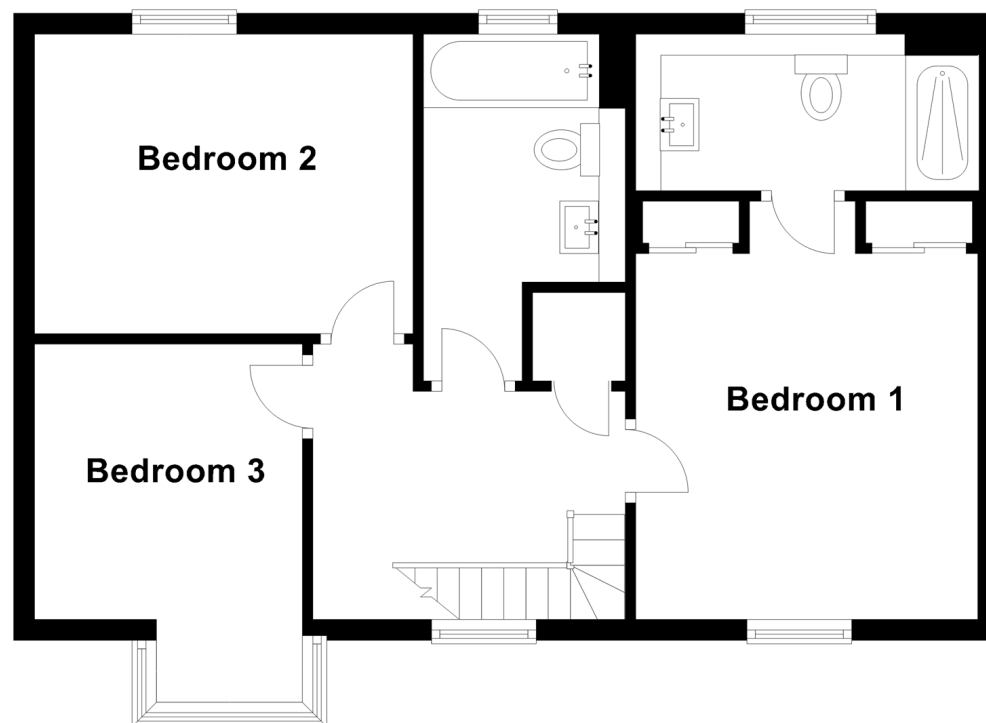
Ground Floor

Approx. 50.3 sq. metres (541.4 sq. feet)



First Floor

Approx. 51.4 sq. metres (553.3 sq. feet)



Accommodation

GROUND FLOOR

Entrance Hall

Cloakroom

Kitchen/Dining Room: 17'8 x 10'11
(5.39m x 3.33m)

Lounge: 18'6 x 11'3 up to door well
(5.64m x 3.43m)

FIRST FLOOR

Landing

Bedroom 1: 13'3 up to fitted wardrobes
x 10'7 (4.04m x 3.23m)

En Suite Shower Room: 10'7 x 3'10
(3.23m x 1.17m)

Bathroom: 7'9 up to door well x 5'5
(2.36m x 1.65m)

Bedroom 2: 11'2 x 8'4 (3.41m x 2.54m)

Bedroom 3: 11'10 into bay x 9'5 (3.61m x
2.87m)

OUTSIDE

Front & Rear Garden

Garage With Electricity: 20'2 x 9'3
(6.15m x 2.82m)

Driveway Parking for 2 cars



Main features

- Lovely family home in a fantastic position on a quiet one way road and overlooking a park
- Excellent build quality from Crest Nicholson
- Remainder of NHBC warranty
- Sunny aspect and private rear garden
- Just a short drive to Gatwick, Horsham and Crawley
- Pleasant woodland walks nearby and green spaces to enjoy



Nearest Schools

Primary Schools: Kilnwood Vale Primary School 0.2 miles. Bewbush Community Primary 0.9 miles, Waterfield Primary 0.9 miles. Secondary Schools: Holy Trinity CofE Secondary School, Crawley 1.5 miles, St Wilfrid's Catholic Comprehensive School, Crawley 1.7 miles.



Transport Information

Train Stations: Faygate 0.9 miles, Ifield 1.6 miles, Crawley 2.5 miles



Address

Rushy Field, Faygate, Horsham, West Sussex, RH12



Directions

For directions to this property please contact us.



cubitt&west
Helping you move forwards

Call Horsham Branch 01403 269268 ■ cubittandwest.co.uk



■ Legal advice should be taken to verify fixtures/fittings, planning, alterations and/or lease details ■ Appliances & services are untested, dimensions are approximate and floor plans are not to scale



20916694/20210827/SEH/CB