



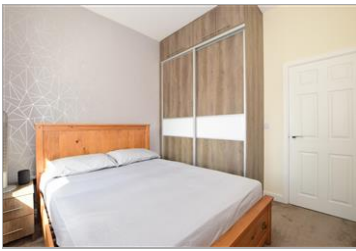
Price
£425,000

Freehold

3x  2x  1x 

**Bricklayer Lane,
Faygate, Horsham, West
Sussex, RH12**

cubitt&west
Helping you move forwards



Main features

- Great position, right on the edge of the development
- Views over woodland and stream
- Beautifully presented with high ceilings and modern decor
- Larger than average L shaped plot
- Remainder of NHBC warranty
- Convenience of 2 allocated parking spaces

Accommodation

GROUND FLOOR

Entrance Hall

Cloakroom

Kitchen/Diner: 17'1 x 9'4 (5.21m x 2.85m)

Lounge: 16'10 x 13'3 (5.13m x 4.04m)

FIRST FLOOR

Landing

Bedroom 1: 16'6 into fitted wardrobes x 9'1 (5.03m x 2.77m)

En Suite Shower Room: 9'10 x 4'0 (3.00m x 1.22m)

Bedroom 2: 10'5 at widest point x 9'11 into fitted wardrobes (3.18m x 3.02m)

Bedroom 3: 10'6 at widest point x 6'7 at widest point (3.20m x 2.01m)

Bathroom: 6'4 x 5'4 (1.93m x 1.63m)

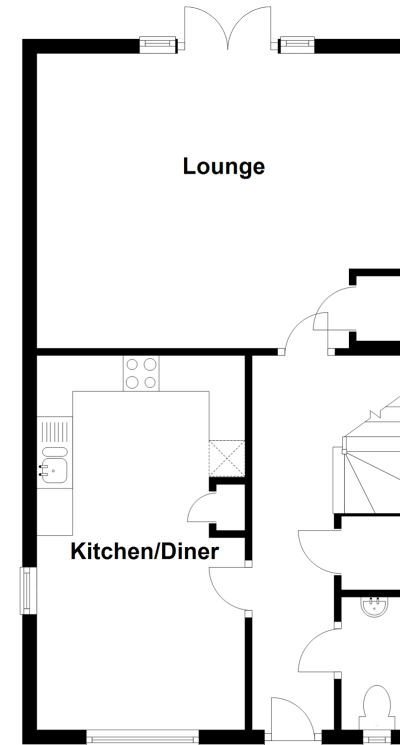
OUTSIDE

Front & Rear Gardens

2 Allocated Parking Spaces

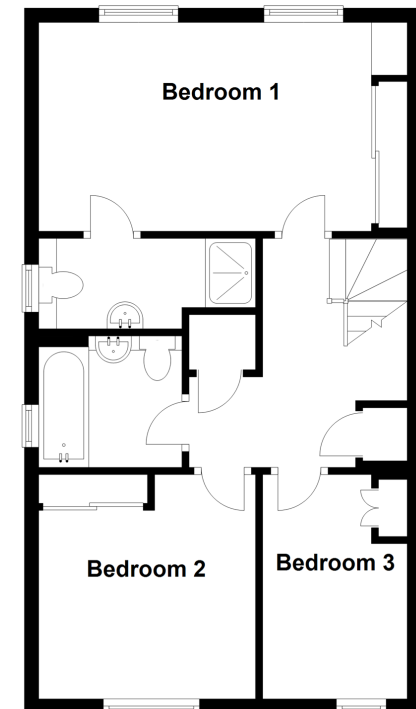
Ground Floor

Approx. 48.5 sq. metres (522.3 sq. feet)



First Floor

Approx. 48.5 sq. metres (522.3 sq. feet)



Call Horsham - 01403 269268 ■ cubittandwest.co.uk

- Legal advice should be taken to verify fixtures/fittings, planning, alterations and/or lease details
- Appliances & services are untested, dimensions are approximate and floor plans are not to scale



20916705/20210722/SEH/RSH