



Price

£400,000

Freehold

2x  1x  1x 

The Crescent, Horley,
Surrey, RH6

OVER 60?

Secure this property
for up to **59% less!**

cubitt & west
Helping you move forwards



Main features

- Off road parking
- Great for first time buyers to make it their own
- Scope to extend, subject to planning permission
- Walking distance to shops and schools
- Close transport links to Gatwick Airport and London

Accommodation

GROUND FLOOR

Entrance Hall

Kitchen/Breakfast Room: 13'0 x 11'1
(3.97m x 3.38m)

Lounge: 17'6 x 10'9 (5.34m x 3.28m)

Bedroom 1: 13'9 x 10'9 (4.19m x 3.28m)

Bedroom 2: 11'9 x 11'2 (3.58m x 3.41m)

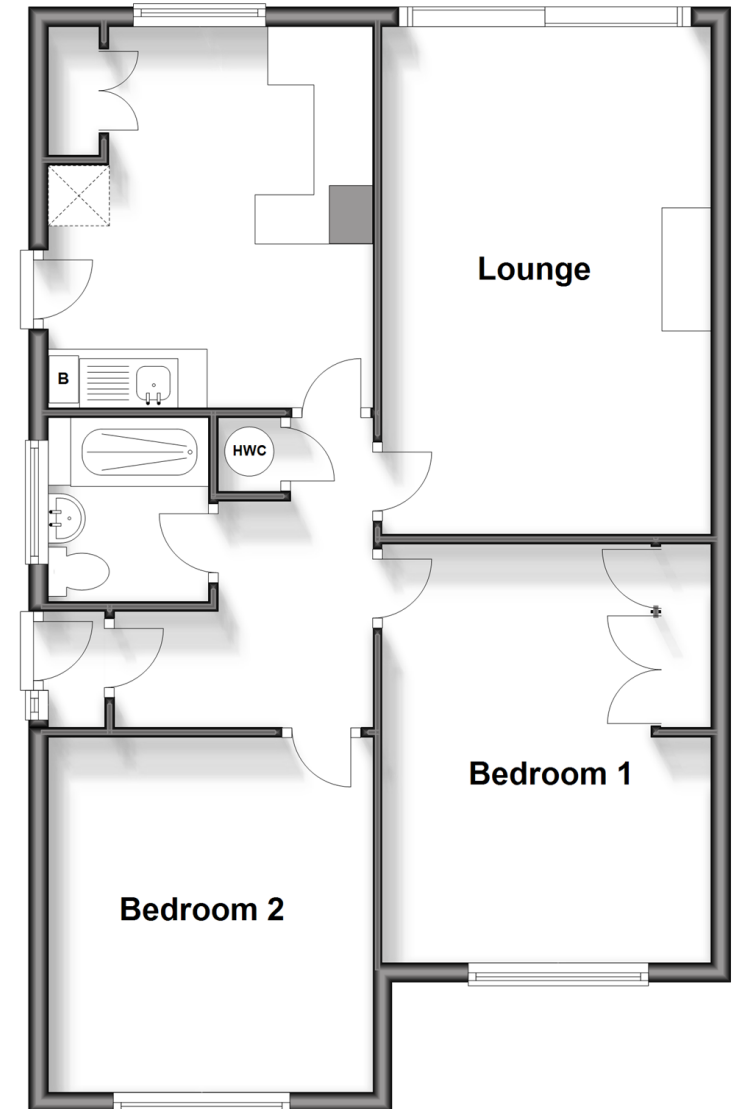
Shower Room: 6'0 x 5'4 (1.83m x 1.63m)

OUTSIDE

ORP
Garden

Ground Floor

Approx. 68.5 sq. metres (736.9 sq. feet)



Call Horley - 01293 785338 ■ cubittandwest.co.uk

- Legal advice should be taken to verify fixtures/fittings, planning, alterations and/or lease details
- Appliances & services are untested, dimensions are approximate and floor plans are not to scale
- Through a Homewise Home For Life Plan people aged 60+ can secure this property for up to 59% less, by purchasing a Lifetime Lease.



20811039/20240913/TP/SI