



Price
£550,000

Freehold

4x  1x  1x 

**Smallfield, Horley,
Surrey, RH6**

OVER 60?

Secure this property
for up to **59% less!**

cubitt & west
Helping you move forwards



Main features

- Guide price of £550,000 - £600,000
- 4 bedroom detached bungalow
- Scope to extend (subject to planning permission) and update
- Situated on a private road in village of Smallfield
- Mature gardens front, side and rear
- Spacious living accommodation

Accommodation

GROUND FLOOR

Entrance Hall

Separate Toilet

Lounge/Dining Area: 32'0 x 20'0 (9.76m x 6.10m)

Kitchen: 14'0 x 8'0 (4.27m x 2.44m)

Bedroom 1: 15'0 x 11'0 (4.58m x 3.36m)

Bedroom 2: 13'0 x 12'0 (3.97m x 3.66m)

Bedroom 3: 11'0 x 9'0 (3.36m x 2.75m)

Bedroom 4: 8'0 x 7'0 (2.44m x 2.14m)

Bathroom

Separate WC

OUTSIDE

Front Garden

Off Road Parking

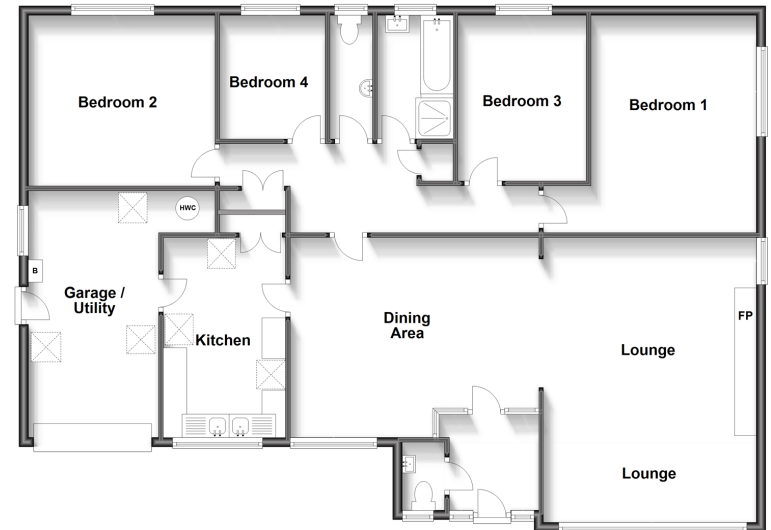
Garage/Utility Area

Rear Garden

Call Horley - 01293 785338 ■ cubittandwest.co.uk

- Legal advice should be taken to verify fixtures/fittings, planning, alterations and/or lease details
- Appliances & services are untested, dimensions are approximate and floor plans are not to scale
- Through a Homewise Home For Life Plan people aged 60+ can secure this property for up to 59% less, by purchasing a Lifetime Lease.

Ground Floor
Approx. 152.4 sq. metres (1640.6 sq. feet)



20810779/20240323/TP/AG