



**Guide Price**  
**£425,000**

**Freehold**

3x  1x  2x 

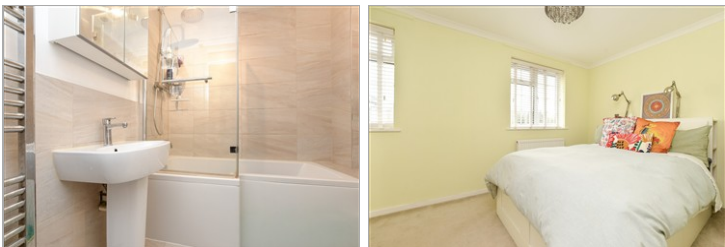
**Harrowsley Court,  
Horley, Surrey, RH6**

**OVER 60?**

Secure this property  
for up to **59% less!**

**cubitt&west**  
Helping you move forwards





## Main features

- Immaculately presented with garage and parking
- Corner plot & large secluded rear garden
- Possibility to extend STPP
- Open plan kitchen/diner with patio doors to garden
- Lovely location close to schools, parks and transport links

## Accommodation

### GROUND FLOOR

Entrance Hallway

Lounge: 14'0 x 13'9 (4.27m x 4.19m)

Kitchen/Diner: 13'6 x 9'2 (4.12m x 2.80m)

### FIRST FLOOR

Landing

Bedroom 1: 13'7 x 8'6 (4.14m x 2.59m)

Bedroom 2: 12'5 x 7'5 (3.79m x 2.26m)

Bedroom 3: 9'3 x 5'10 (2.82m x 1.78m)

Bathroom

### OUTSIDE

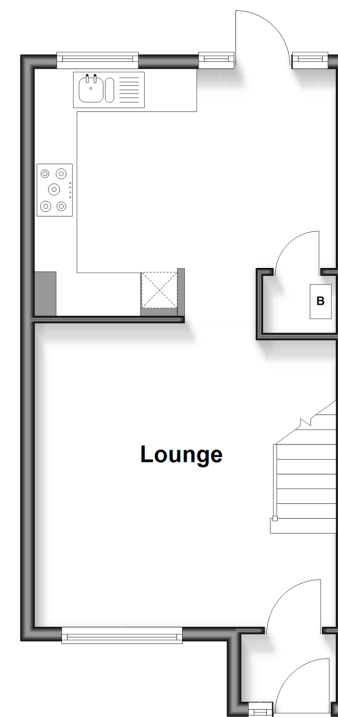
Front & Rear Gardens

### OUTBUILDING

Garage

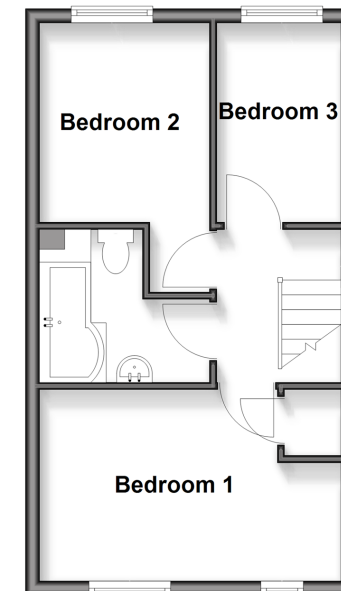
### Ground Floor

Approx. 34.5 sq. metres (371.6 sq. feet)



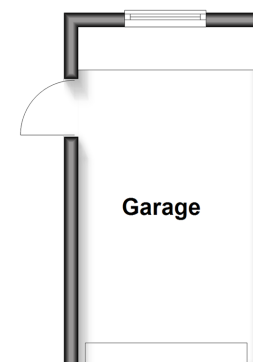
### First Floor

Approx. 33.1 sq. metres (356.8 sq. feet)



### Outbuilding

Approx. 11.8 sq. metres (126.6 sq. feet)



**Call Horley - 01293 785338 ■ [cubittandwest.co.uk](http://cubittandwest.co.uk)**

- Legal advice should be taken to verify fixtures/fittings, planning, alterations and/or lease details
- Appliances & services are untested, dimensions are approximate and floor plans are not to scale
- Through a Homewise Home For Life Plan people aged 60+ can secure this property for up to 50% less, by purchasing a Lifetime Lease



20811293/20251206/TP/SI