



Price
£280,000

Leasehold

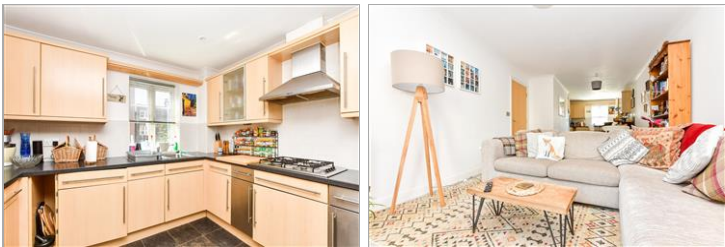
2x  2x  1x 

**The Quadrangle, Lumley
Road, Horley, Surrey,
RH6**

OVER 60?

Secure this property
for up to **59% less!**

cubitt&west
Helping you move forwards



Main features

- Town centre location
- Very close to train station & local shops
- Open plan living with bright & airy feel
- Stunning communal gardens
- En-suite to primary bedroom

Accommodation

FIRST FLOOR

Entrance Hallway

Lounge / Diner / Kitchen: 32'0 x 10'0
(9.76m x 3.05m)

Bedroom 1: 17'0 x 15'0 (5.19m x 4.58m)

En suite Shower

Bedroom 2: 12'0 x 9'0 (3.66m x 2.75m)

Bathroom

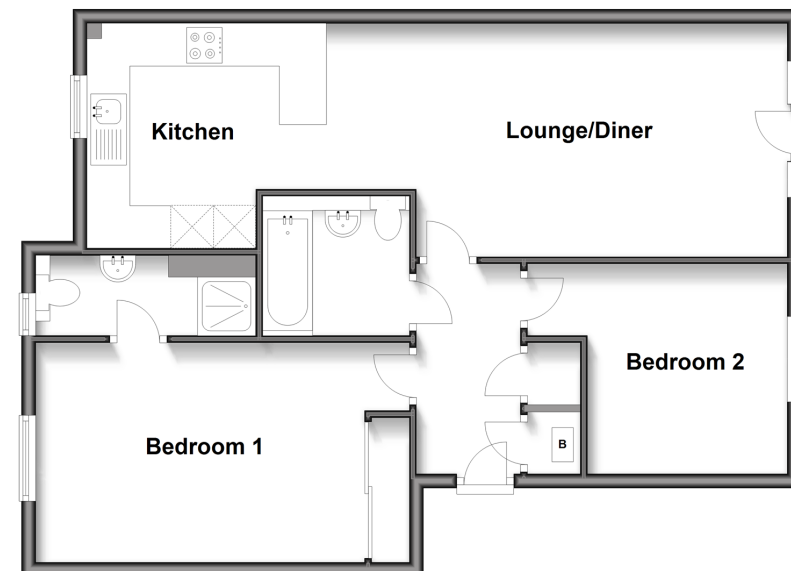
OUTSIDE

Allocated Parking

Communal Gardens

First Floor

Approx. 71.0 sq. metres (764.6 sq. feet)



Call Horley - 01293 785338 ■ cubittandwest.co.uk

- Legal advice should be taken to verify fixtures/fittings, planning, alterations and/or lease details
- Appliances & services are untested, dimensions are approximate and floor plans are not to scale
- Through a Homewise Home For Life Plan people aged 60+ can secure this property for up to 59% less, by purchasing a Lifetime Lease.



20811061/20250802/TP/SI