



Price
£350,000

Freehold

2x  1x  1x 

**Westmead Drive,
Salfords, Surrey, RH1**

OVER 60?

Secure this property
for up to **59% less!**

cubitt&west
Helping you move forwards



Main features

- No chain
- Potential to extend subject to planning permission
- Both bedrooms are doubles
- Great sized garden with both patio and grassed areas
- Walking distance to train station, local shops and school

Accommodation

GROUND FLOOR

Entrance Hallway

Lounge: 13'1 x 11'9 (3.99m x 3.58m)

Kitchen / Diner: 18'6 x 9'3 (5.64m x 2.82m)

FIRST FLOOR

Landing

Bedroom 1: 16'4 x 10'2 (4.98m x 3.10m)

Bedroom 2: 11'3 x 10'2 (3.43m x 3.10m)

Bathroom

OUTSIDE

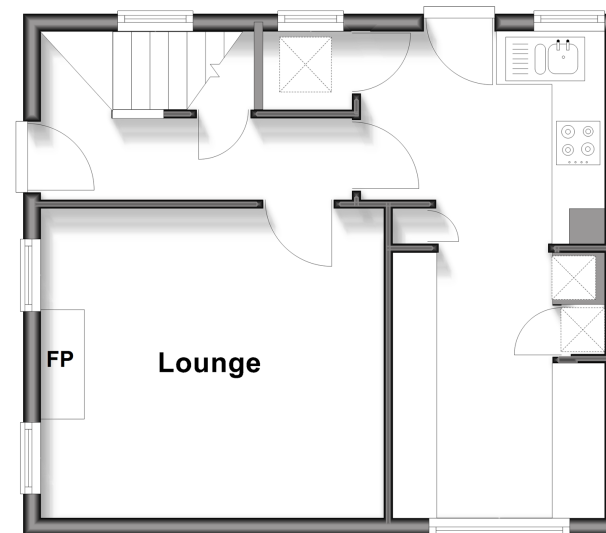
Driveway

Front & Rear Gardens

Shed x 3

Ground Floor

Approx. 36.3 sq. metres (390.7 sq. feet)



First Floor

Approx. 35.9 sq. metres (386.7 sq. feet)



Call Horley - 01293 785338 ■ cubittandwest.co.uk

- Legal advice should be taken to verify fixtures/fittings, planning, alterations and/or lease details
- Appliances & services are untested, dimensions are approximate and floor plans are not to scale
- Through a Homewise Home For Life Plan people aged 60+ can secure this property for up to 59% less, by purchasing a Lifetime Lease.



23411072/20250721/SI/SI