



OVER 60?

Secure this property
for up to **59% less!**

Price

£530,000

Freehold

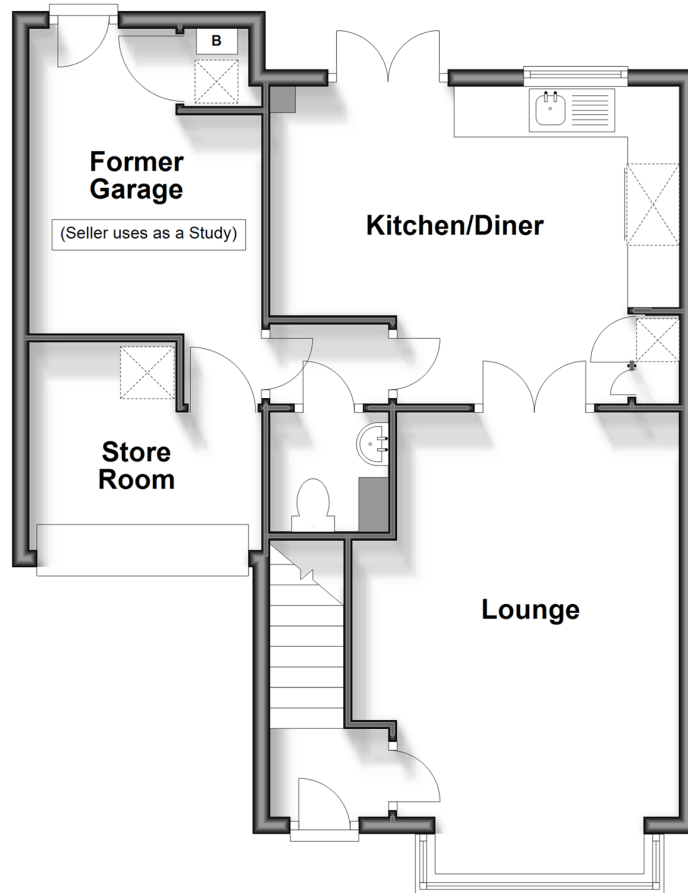
3x  2x  2x 

**Furze Close, Hurstland
Park, Horley, Surrey,
RH6**

cubitt&west
Helping you move forwards

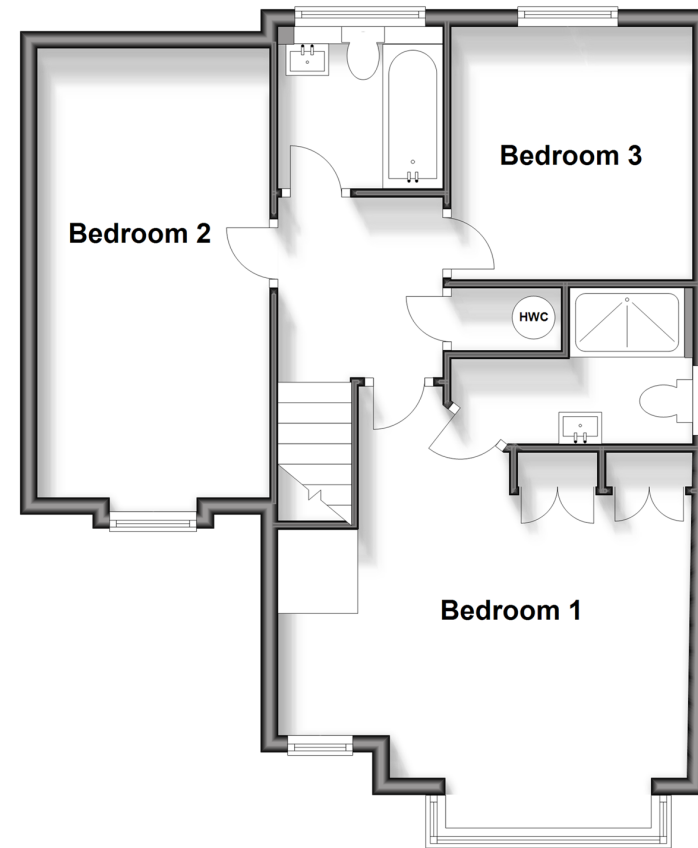
Ground Floor

Approx. 58.4 sq. metres (628.8 sq. feet)



First Floor

Approx. 57.3 sq. metres (616.5 sq. feet)



Accommodation

GROUND FLOOR

Entrance Hallway

Lounge: 15'5 x 12'2 (4.70m x 3.71m)

Kitchen / Diner: 15'9 x 12'3 (4.80m x 3.74m)

Study (Former Garage): 11'8 x 8'11 (3.56m x 2.72m)

FIRST FLOOR

Landing

Bedroom 1: 15'9 x 14'6 (4.80m x 4.42m)

En Suite

Bedroom 2: 13'8 x 8'11 (4.17m x 2.72m)

Bedroom 3: 9'8 x 8'9 (2.95m x 2.67m)

Bathroom

OUTSIDE

South Facing Garden

Driveway for 2 cars



Main features

- Low maintenance garden
- Driveway for two cars
- Sought-after cul-de-sac location
- Within walking distance to good schools & town centre
- Recently renovated to high standard
- Three double bedrooms with primary housing a beautiful en-suite



Nearest Schools

Primary Schools: Yattendon School 1.6 miles, Burstow Primary 1.8 miles, Meath Green Junior School 2.1 miles.
Secondary Schools: Oakwood School 1.8 miles
Higher Education: Oriel High School 4.9 miles



Transport Information

Train Stations: Horley 1.2 miles, Salfords 3.2 miles, Gatwick Airport 3.5 miles



Address

Furze Close, Hurstland Park, Horley, Surrey, RH6



Directions

For directions to this property please contact us.



cubitt&west
Helping you move forwards

Call Horley Branch 01293 785338 ■ cubittandwest.co.uk



- Legal advice should be taken to verify fixtures/fittings, planning, alterations and/or lease details
- Appliances & services are untested, dimensions are approximate and floor plans are not to scale
- Through a Homewise Home For Life Plan people aged 60+ can secure this property for up to 59% less, by purchasing a Lifetime Lease.



20811112/20250426/TP/SI