



**Price**  
**£325,000**

**Freehold**

3x  1x  1x 

**Thornton Place, Horley,  
Surrey, RH6**

**OVER 60?**

Secure this property  
for up to **59% less!**

**cubitt&west**  
Helping you move forwards





## Main features

- No chain
- Downstairs toilet & upstairs bathroom
- Potential to improve
- Conveniently located near good schools & local shops
- Front & rear garden

## Accommodation

### GROUND FLOOR

Entrance Hallway

Kitchen: 10'7 x 10'4 (3.23m x 3.15m)

Lounge/Diner: 21'5 x 10'5 (6.53m x 3.18m)

Cloakroom: 6'0 x 4'6 (1.83m x 1.37m)

### FIRST FLOOR

Landing

Bedroom 1: 14'0 x 10'7 (4.27m x 3.23m)

Bedroom 2: 10'8 x 10'2 (3.25m x 3.10m)

Bedroom 3: 10'7 x 7'6 (3.23m x 2.29m)

Bathroom: 9'3 x 4'6 (2.82m x 1.37m)

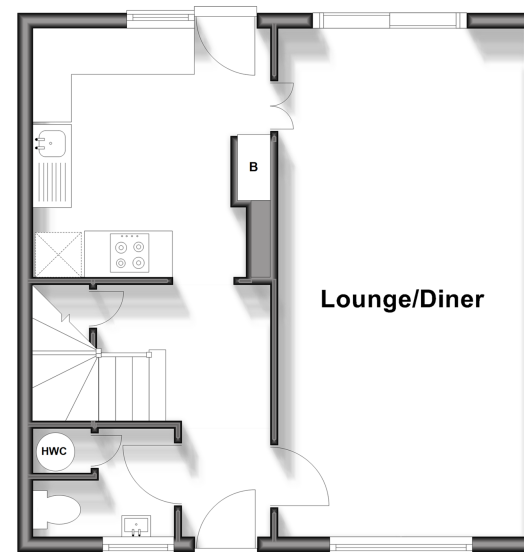
### OUTSIDE

Front & Rear Garden

Off Road Parking

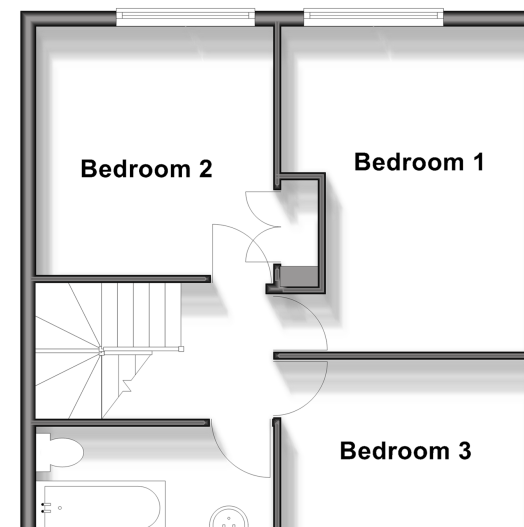
## Ground Floor

Approx. 42.0 sq. metres (451.8 sq. feet)



## First Floor

Approx. 42.2 sq. metres (454.5 sq. feet)



**Call Horley - 01293 785338 ■ [cubittandwest.co.uk](http://cubittandwest.co.uk)**

- Legal advice should be taken to verify fixtures/fittings, planning, alterations and/or lease details
- Appliances & services are untested, dimensions are approximate and floor plans are not to scale
- Through a Homewise Home For Life Plan people aged 60+ can secure this property for up to 59% less, by purchasing a Lifetime Lease.



20811014/20250417/CB/SI