



Price
£575,000

Freehold

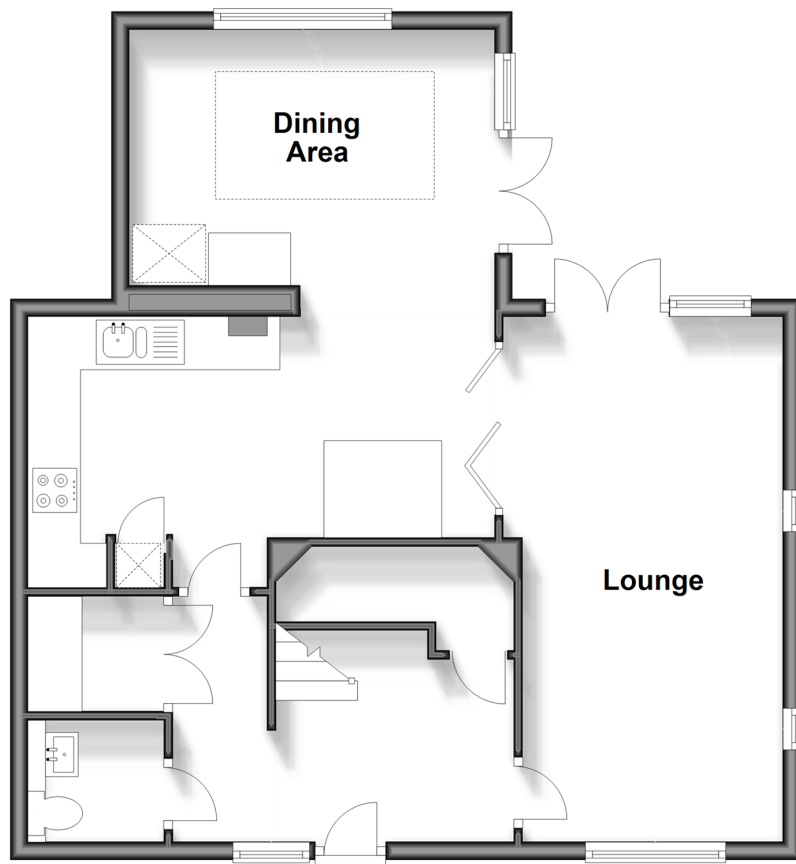
2x  2x  2x 

**Seymour Mews,
Malthouse Lane, Horley,
Surrey, RH6**

cubitt&west
Helping you move forwards

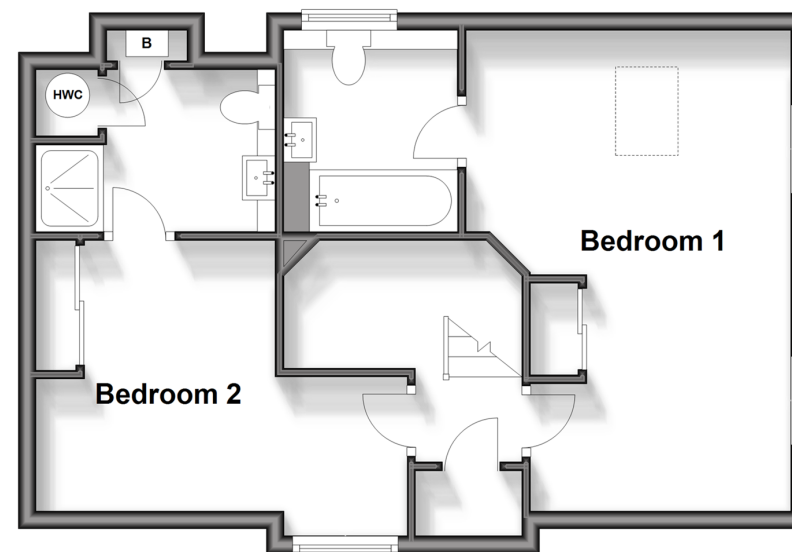
Ground Floor

Approx. 62.6 sq. metres (674.1 sq. feet)



First Floor

Approx. 46.5 sq. metres (500.0 sq. feet)



Accommodation

GROUND FLOOR

Entrance Hallway

Dining Area: 14'3 x 9'8 (4.35m x 2.95m)

Kitchen: 17'3 x 8'0 (5.26m x 2.44m)

Lounge: 20'2 x 9'8 (6.15m x 2.95m)

Utility Room: 5'2 x 4'3 (1.58m x 1.30m)

Cloakroom: 4'5 x 4'3 (1.35m x 1.30m)

Reception: 12'7 x 7'10 (3.84m x 2.39m)

Office: 15'8 x 9'1 (4.78m x 2.77m)

FIRST FLOOR

Landing

Bedroom 1: 17'11 x 12'0 (5.46m x 3.66m)

En suite 1: 7'6 x 6'5 (2.29m x 1.96m)

Bedroom 2: 13'10 x 9'10 (4.22m x 3.00m)

En suite 2: 9'0 x 6'0 (2.75m x 1.83m)

OUTSIDE

Rear Garden



Main features

- No chain
- Immaculately presented throughout and recently extended & renovated to very high spec
- Large garden office with A/C, heating and power
- Private tree lined road with luxury feel and two allocated parking spaces
- Both double bedrooms come with en-suites



Nearest Schools

Primary Schools: Meath Green Junior School 0.3 miles, Manorfield Primary and Nursery School 0.8 miles, Yattendon School 1.0 miles

Secondary Schools: Oakwood School 1.4 miles, Cornfield



Transport Information

Train Stations: Horley 1.4 miles, Salfords 1.5 miles, Gatwick Airport 2.1 miles



Address

Seymour Mews, Malthouse Lane, Horley, Surrey, RH6



Directions

For directions to this property please contact us.



cubitt&west
Helping you move forwards

Call Horley Branch 01293 785338 ■ cubittandwest.co.uk



■ Legal advice should be taken to verify fixtures/fittings, planning, alterations and/or lease details ■ Appliances & services are untested, dimensions are approximate and floor plans are not to scale



20811090/20241221/TP/SI