



Guide Price
£425,000

Freehold

3x  2x  1x 

**Sangers Mews, Horley
Row, Horley, Surrey,
RH6**

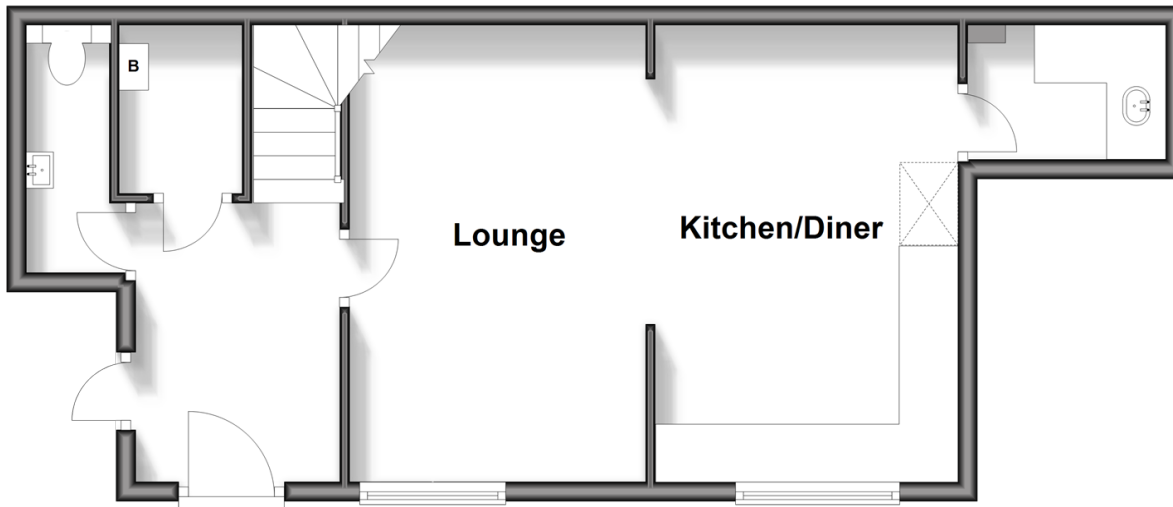
OVER 60?

Secure this property
for up to **59% less!**

cubitt&west
Helping you move forwards

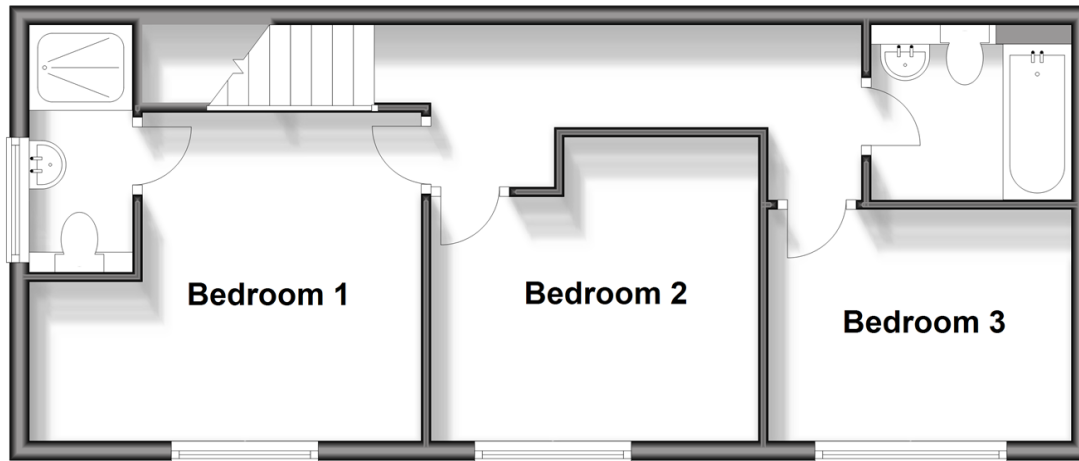
Ground Floor

Approx. 45.4 sq. metres (488.9 sq. feet)



First Floor

Approx. 45.8 sq. metres (493.3 sq. feet)



Accommodation

GROUND FLOOR

Entrance Hallway: 10'2 x 6'9 (3.10m x 2.06m)

Lounge: 15'5 x 10'1 (4.70m x 3.08m)

Kitchen / Diner: 15'7 x 10'3 (4.75m x 3.13m)

Utility: 6'8 x 4'7 (2.03m x 1.40m)

Cloakroom: 8'4 x 2'7 (2.54m x 0.79m)

Cupboard with boiler: 5'1 x 3'8 (1.55m x 1.12m)

FIRST FLOOR

Landing: 16'6 x 4'2 (5.03m x 1.27m)

Bedroom 1: 13'7 x 12'4 (4.14m x 3.76m)

En suite shower: 10'0 x 3'6 (3.05m x 1.07m)

Bedroom 2: 11'6 x 11'0 (3.51m x 3.36m)

Bedroom 3: 10'7 x 9'4 (3.23m x 2.85m)

Bathroom: 6'8 x 6'0 (2.03m x 1.83m)

OUTSIDE

Back Garden

ORP



Main features

- Open plan living with separate utility room
- Former coach house
- All large double bedrooms with primary having en-suite
- Great location close to good schools, town centre & train links
- Allocated parking



Nearest Schools

Primary Schools: Meath Green Junior School 0.3 miles, Yattendon School 0.4 miles, Manorfield Primary and Nursery School 0.4 miles

Secondary Schools: Oakwood School 0.7 miles, Cornfield



Transport Information

Train Stations: Horley 0.9 miles, Salfords 2.1 miles, Gatwick Airport 2.2 miles



Address

Sangers Mews, Horley Row, Horley, Surrey, RH6



Directions

For directions to this property please contact us.



cubitt&west
Helping you move forwards

Call Horley Branch 01293 785338 ■ cubittandwest.co.uk



■ Legal advice should be taken to verify fixtures/fittings, planning, alterations and/or lease details ■ Appliances & services are untested, dimensions are approximate and floor plans are not to scale
■ Through a Homewise Home For Life Plan people aged 60+ can secure this property for up to 59% less, by purchasing a Lifetime Lease.



20811078/20250517/TP/SI