



Price

£800,000

Freehold

5x  3x  2x 

The Close, Horley,
Surrey, RH6

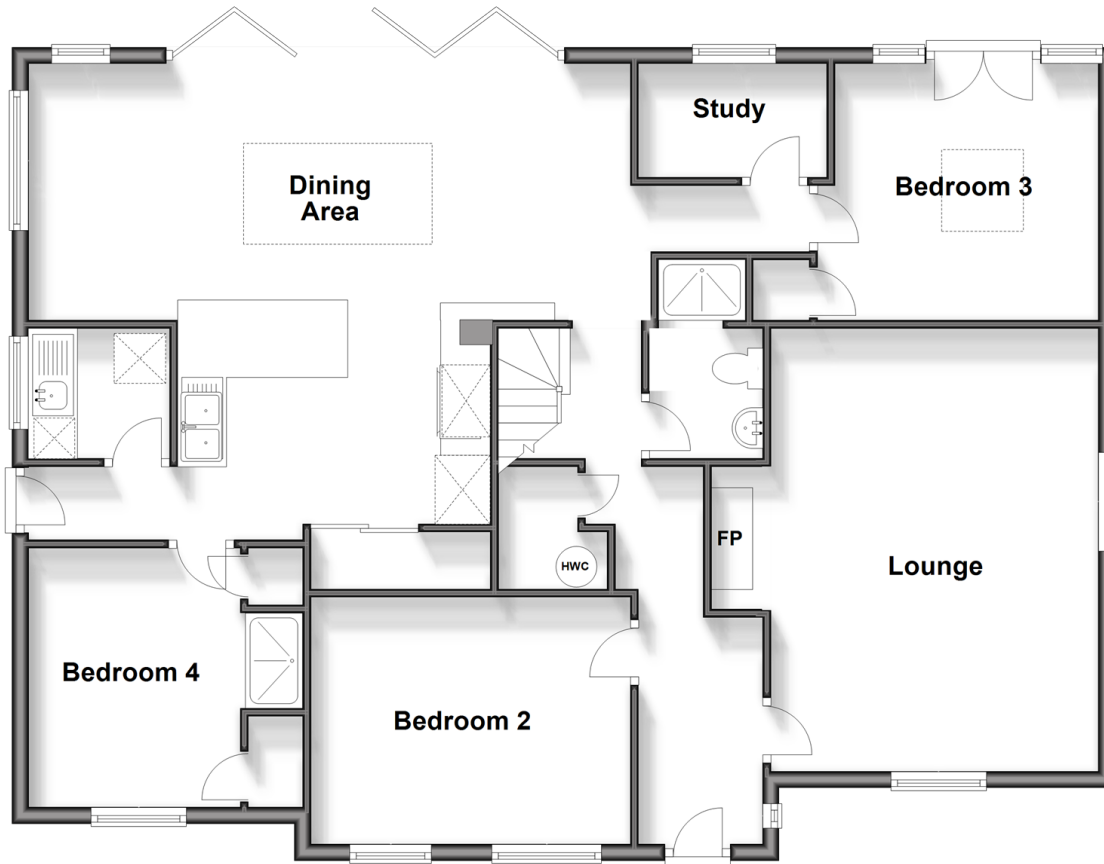
OVER 60?

Secure this property
for up to **59% less!**

cubitt & west
Helping you move forwards

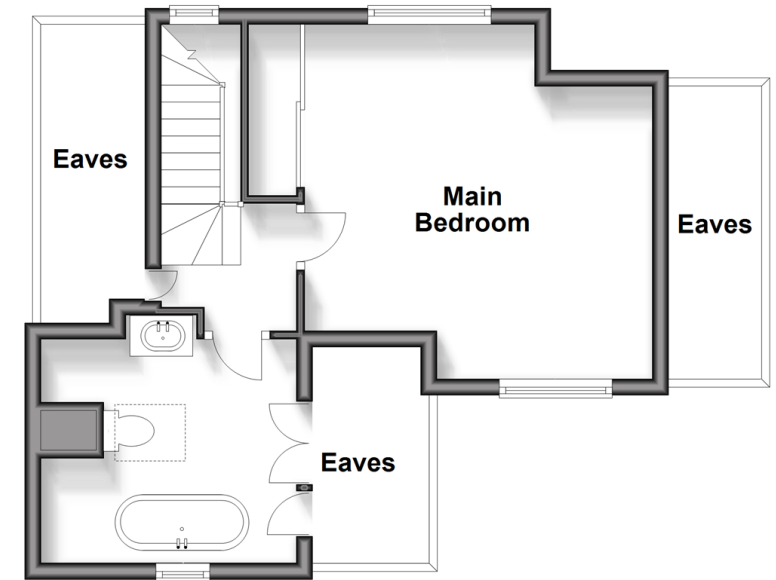
Ground Floor

Approx. 120.2 sq. metres (1293.7 sq. feet)



First Floor

Approx. 32.0 sq. metres (344.6 sq. feet)



Accommodation

GROUND FLOOR

Entrance Hall

Lounge: 17'10 x 12'7 (5.44m x 3.84m)

Kitchen / Diner: 21'0 x 18'4 (6.41m x 5.59m)

Study: 7'0 x 4'7 (2.14m x 1.40m)

Utility Room: 6'1 x 5'1 (1.86m x 1.55m)

Bedroom 2: 13'0 x 10'0 (3.97m x 3.05m)

Bedroom 3: 11'0 x 10'7 (3.36m x 3.23m)

Bedroom 4: 10'6 x 8'7 (3.20m x 2.62m)

En suite

Shower Room

FIRST FLOOR

Landing

Main bedroom: 14'2 x 14'1 (4.32m x 4.30m)

Bathroom

OUTSIDE

Driveway & lawn

Rear Garden

Shed 1: 12'6 x 5'0 (3.81m x 1.53m)

Shed 2: 12'6 x 5'0 (3.81m x 1.53m)

Shed 3: 8'0 x 6'0 (2.44m x 1.83m)

Workshop: 27'8 x 13'5 (8.44m x 4.09m)



Main features

- Immaculately renovated chalet bungalow
- Large entertaining areas both indoors and outdoors
- Separate self-contained 1 bed annex
- Secluded location within walking distance to town centre and train station
- Plenty of parking options available



Nearest Schools

Primary Schools: Yattendon School 1.3 miles, Manorfield Primary and Nursery School 1.7 miles, Meath Green Junior School 2.3 miles
Secondary Schools: Oakwood School 0.4 miles, Hazelwick School 3.7 miles, Cornfield School 4.0 miles



Transport Information

Train Stations: Horley 0.8 miles, Gatwick Airport 2.7 miles, Salfords 3.4 miles



Address

The Close, Horley, Surrey, RH6



Directions

For directions to this property please contact us.



cubitt&west
Helping you move forwards

Call Horley Branch 01293 785338 ■ cubittandwest.co.uk



- Legal advice should be taken to verify fixtures/fittings, planning, alterations and/or lease details
- Appliances & services are untested, dimensions are approximate and floor plans are not to scale
- Through a Homewise Home For Life Plan people aged 60+ can secure this property for up to 59% less, by purchasing a Lifetime Lease.



EPC RATING
CURRENT: **D(64)** POTENTIAL: **C(78)**

20811021/20241104/TP/SI