



Price
£375,000

Freehold

2x  1x  1x 

**Powell Close, Horley,
Surrey, RH6**

OVER 60?

Secure this property
for up to **59% less!**

cubitt&west
Helping you move forwards



Main features

- Large corner plot
- Garage & driveway
- Quiet cul-de-sac location
- Walking distance to shops, schools & bus links
- Options to extend (subject to planning permission)

Accommodation

GROUND FLOOR

Entrance Hallway

Kitchen: 7'9 x 7'3 (2.36m x 2.21m)

Lounge/Diner: 14'5 x 13'3 (4.40m x 4.04m)

FIRST FLOOR

Landing

Bathroom: 8'7 x 5'0 (2.62m x 1.53m)

Bedroom 1: 10'5 x 9'9 (3.18m x 2.97m)

Bedroom 2: 8'1 x 8'0 (2.47m x 2.44m)

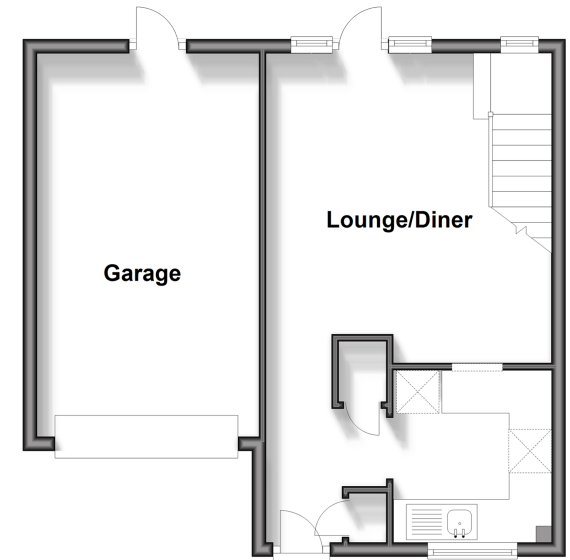
OUTSIDE

Garage & Driveway

Rear Garden

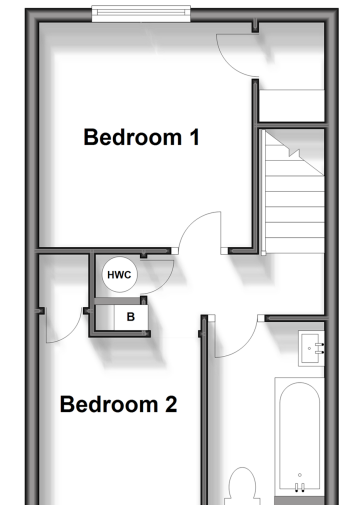
Ground Floor

Approx. 45.2 sq. metres (486.2 sq. feet)



First Floor

Approx. 27.7 sq. metres (298.4 sq. feet)



Call Horley - 01293 785338 ■ cubittandwest.co.uk

- Legal advice should be taken to verify fixtures/fittings, planning, alterations and/or lease details
- Appliances & services are untested, dimensions are approximate and floor plans are not to scale
- Through a Homewise Home For Life Plan people aged 60+ can secure this property for up to 59% less, by purchasing a Lifetime Lease.



20811043/20241019/TP/SI