



Price
£116,000

Leasehold

2x  1x  1x 

**Redwing House, Webber
Street, Horley, Surrey,
RH6**

OVER 60?

Secure this property
for up to **59% less!**

cubitt & west
Helping you move forwards



Main features

- Shared Ownership - 40% share
- Large two bedroom flat with long lease & allocated parking space
- Popular Westvale development
- Within walking distance to schools, amenities and parks
- Chain Free

Accommodation

GROUND FLOOR

Lounge / Kitchen: 26'4 x 12'0
(8.03m x 3.66m)

Bathroom: 8'1 x 6'8 (2.47m x 2.03m)

Bedroom 1: 15'0 x 11'3 (4.58m x 3.43m)

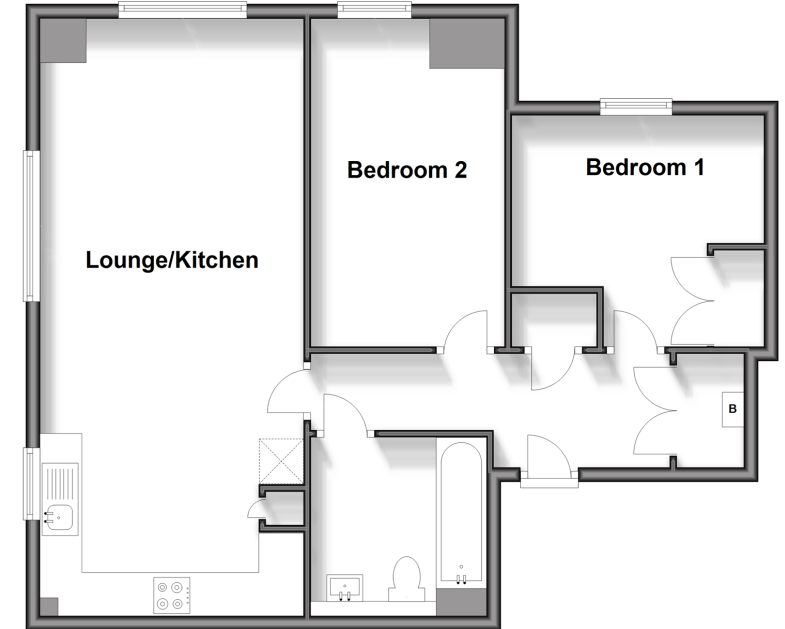
Bedroom 2: 14'10 x 8'9 (4.52m x 2.67m)

OUTSIDE

Allocated Parking

Ground Floor

Approx. 69.8 sq. metres (751.5 sq. feet)



Call Horley - 01293 785338 ■ cubittandwest.co.uk

- Legal advice should be taken to verify fixtures/fittings, planning, alterations and/or lease details
- Appliances & services are untested, dimensions are approximate and floor plans are not to scale
- Through a Homewise Home For Life Plan people aged 60+ can secure this property for up to 59% less, by purchasing a Lifetime Lease.



20811040/20240928/TP/BG