



Price
£350,000

Freehold

2x  1x  1x 

**Homefield Close, Horley,
Surrey, RH6**

OVER 60?

Secure this property
for up to **59% less!**

cubitt & west
Helping you move forwards



Main features

- Completely refurbished & immaculately presented property
- Driveway & extra space for parking
- Quiet cul de sac location
- Short distance to popular Acres Development with parks and countryside walks
- Perfect for first time buyers to move straight in !

Accommodation

GROUND FLOOR

Entrance Hall

Lounge: 11'0 x 9'0 (3.36m x 2.75m)

Kitchen: 14'0 x 7'1 (4.27m x 2.16m)

FIRST FLOOR

Landing

Bedroom 1: 11'0 x 9'1 (3.36m x 2.77m)

Bathroom: 8'0 x 4'0 (2.44m x 1.22m)

Bedroom 2: 11'0 x 7'1 (3.36m x 2.16m)

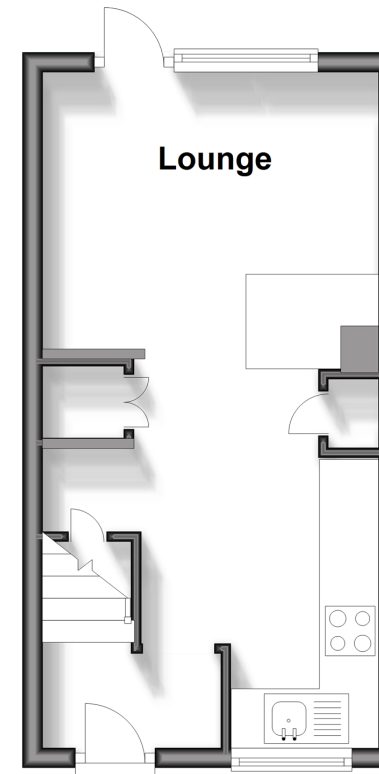
OUTSIDE

Rear Garden

Driveway & ORP

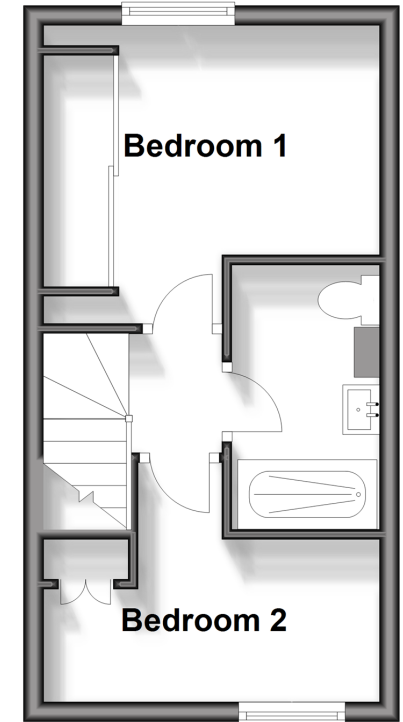
Ground Floor

Approx. 23.1 sq. metres (248.1 sq. feet)



First Floor

Approx. 23.1 sq. metres (248.1 sq. feet)



Call Horley - 01293 785338 ■ cubittandwest.co.uk

- Legal advice should be taken to verify fixtures/fittings, planning, alterations and/or lease details
- Appliances & services are untested, dimensions are approximate and floor plans are not to scale
- Through a Homewise Home For Life Plan people aged 60+ can secure this property for up to 59% less, by purchasing a Lifetime Lease.



20810990/20240928/TP/SI