



OVER 60?

Secure this property
for up to **59% less!**

Price

£350,000

Leasehold

2x  1x  1x 

**The Grange Manor,
Bonehurst Road, Horley,
Surrey, RH6**

cubitt&west
Helping you move forwards



Main features

- Large maisonette with garden
- Open plan Kitchen/Diner leading to decking area
- Both bedrooms are doubles
- Great location within walking distance to town centre
- Situated in an historic 16th Century House with parking for many cars!

Accommodation

GROUND FLOOR

Entrance Hall

Kitchen/Diner: 16'9 x 11'5 (5.11m x 3.48m)

Living Room: 16'1 x 12'7 (4.91m x 3.84m)

Bedroom 1: 11'6 x 9'1 (3.51m x 2.77m)

Bedroom 2: 9'9 x 8'5 (2.97m x 2.57m)

Shower Room

OUTSIDE

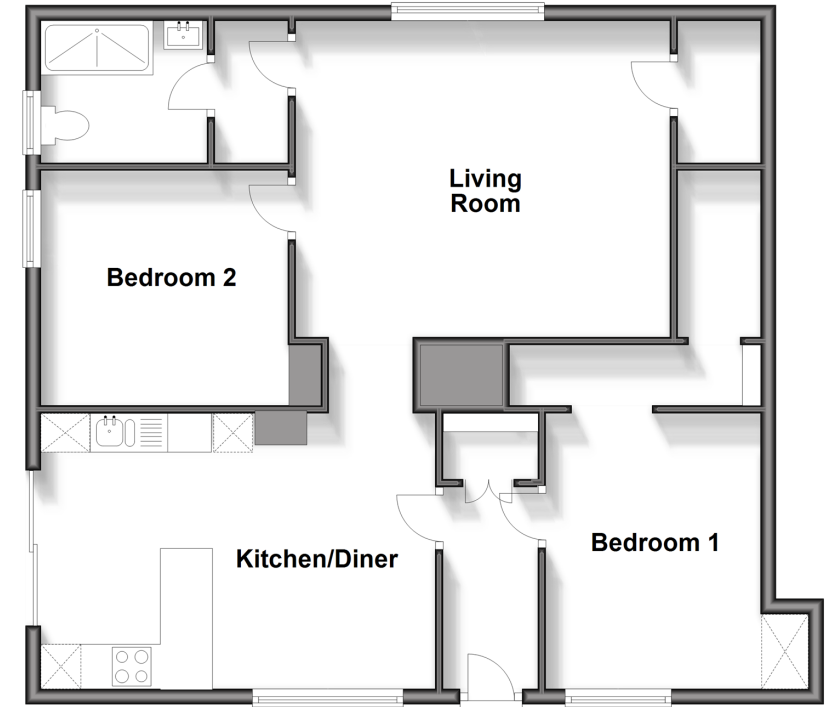
ORP for 3 Cars

Shed/Summer House

Garden

Ground Floor

Approx. 79.5 sq. metres (855.3 sq. feet)



Call Horley - 01293 785338 ■ cubittandwest.co.uk

- Legal advice should be taken to verify fixtures/fittings, planning, alterations and/or lease details
- Appliances & services are untested, dimensions are approximate and floor plans are not to scale
- Through a Homewise Home For Life Plan people aged 60+ can secure this property for up to 59% less, by purchasing a Lifetime Lease.



20811009/20250516/BG/SI