



**OVER 60?**

Secure this property  
for up to **59% less!**

**Price**

**£425,000**

**Leasehold**

3x  1x  1x 

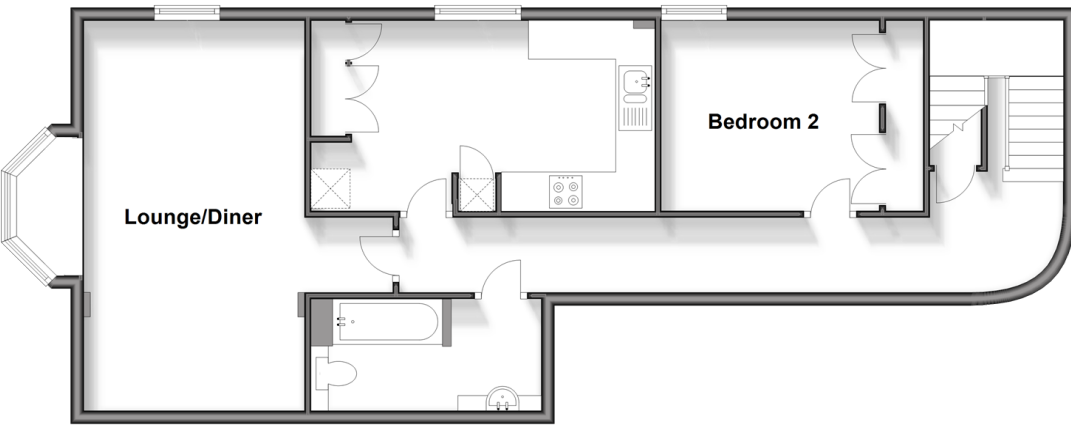
**Cooper Lodge, Massetts  
Road, Horley, Surrey,  
RH6**

**cubitt & west**  
Helping you move forwards



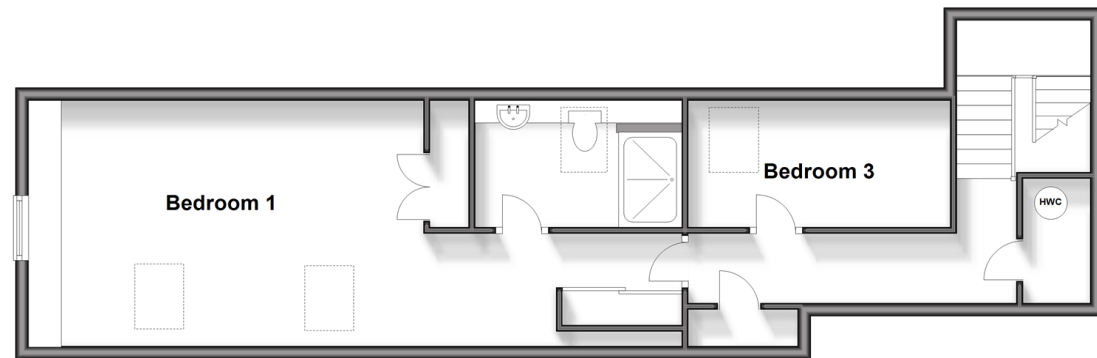
### First Floor

Approx. 77.3 sq. metres (831.9 sq. feet)



### Second Floor

Approx. 60.9 sq. metres (655.6 sq. feet)



## Accommodation

### FIRST FLOOR

Entrance Hall

Lounge / Diner: 12'7 x 11'0 (3.84m x 3.36m)

Bedroom 2: 10'9 x 9'7 (3.28m x 2.92m)

Kitchen: 17'2 x 7'1 (5.24m x 2.16m)

Bathroom: 11'5 x 5'5 (3.48m x 1.65m)

### SECOND FLOOR

Landing

Bedroom 1: 32'4 x 12'1 (9.86m x 3.69m)

Ensuite: 10'3 x 5'2 (3.13m x 1.58m)

Bedroom 3: 13'0 x 3'8 (3.97m x 1.12m)

### OUTSIDE

Allocated Parking

Communal Gardens



## Main features

- Great duplex apartment with allocated parking
- All bedrooms double sized with primary having potential to split
- In walking distance to train station & amenities
- Beautifully presented and kept communal gardens
- One of the most premium apartments in Horley



### Nearest Schools

Primary Schools: Manorfield Primary and Nursery School 0.2 miles, Yattendon School 0.5 miles, Meath Green Junior School 0.9 miles

Secondary Schools: Oakwood School 0.6 miles, Hazelwick



### Transport Information

Train Stations: Horley 0.6 miles, Gatwick Airport 1.5 miles, Salfords 2.9 miles



### Address

Cooper Lodge, Massetts Road, Horley, Surrey, RH6



### Directions

For directions to this property please contact us.





**cubitt&west**  
Helping you move forwards

Call Horley Branch 01293 785338 ■ [cubittandwest.co.uk](http://cubittandwest.co.uk)



- Legal advice should be taken to verify fixtures/fittings, planning, alterations and/or lease details
- Appliances & services are untested, dimensions are approximate and floor plans are not to scale
- Through a Homewise Home For Life Plan people aged 60+ can secure this property for up to 59% less, by purchasing a Lifetime Lease.



20810944/20240629/TP/SI