



Guide Price
£650,000

Freehold

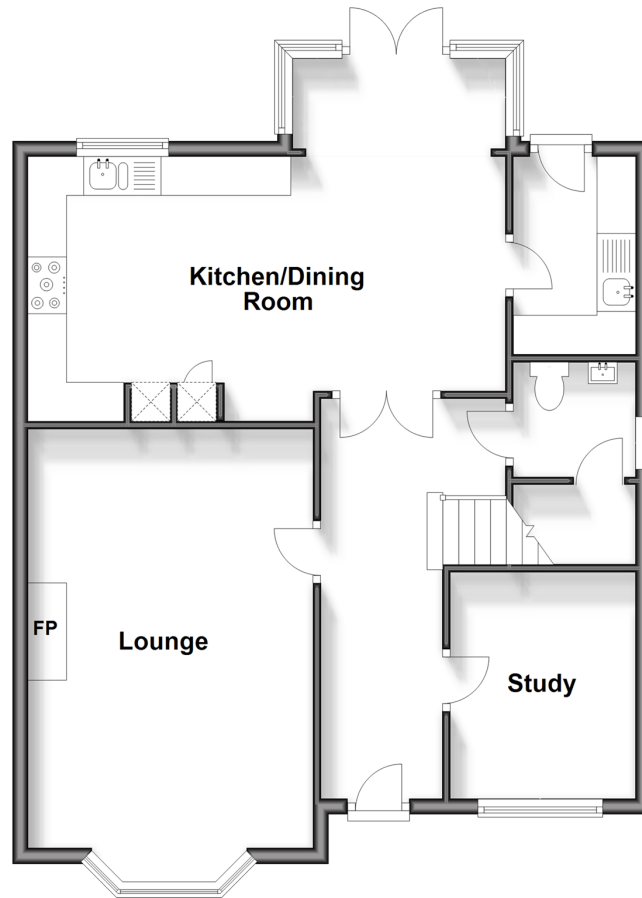
4x  2x  2x 

**Haine Close, Horley,
Surrey, RH6**

cubitt&west
Helping you move forwards

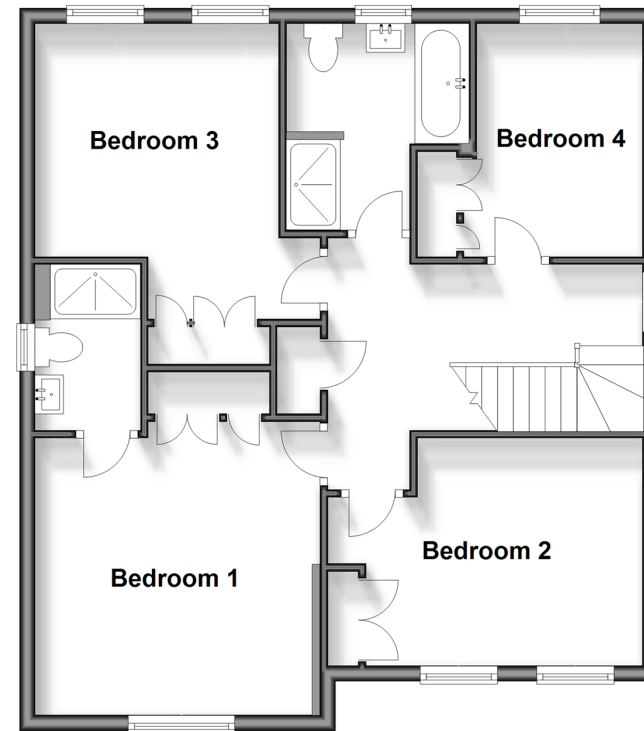
Ground Floor

Approx. 70.9 sq. metres (763.5 sq. feet)



First Floor

Approx. 67.7 sq. metres (729.2 sq. feet)



Accommodation

GROUND FLOOR

Lounge: 19'1 x 12'2 (5.82m x 3.71m)

Study: 9'6 x 7'8 (2.90m x 2.34m)

Kitchen/Dining Room: 20'3 x 15'4
(6.18m x 4.68m)

Utility: 8'4 x 5'2 (2.54m x 1.58m)

Cloakroom: 5'0 x 4'9 (1.53m x 1.45m)

FIRST FLOOR

Bathroom

Bedroom 1: 13'1 x 12'6 (3.99m x 3.81m)

En suite

Bedroom 2: 12'6 x 12'6 (3.81m x 3.81m)

Bedroom 3: 13'0 x 9'6 (3.97m x 2.90m)

Bedroom 4: 10'3 x 7'7 (3.13m x 2.31m)

OUTSIDE

Garden

Allocated Parking Space

Garage



Main features

- Complete chain
- Acres development with gorgeous countryside views
- Garage and driveway for 2 cars
- Beautifully presented with large open plan kitchen/diner
- Four double bedrooms with main having en suite



Nearest Schools

Primary Schools: Yattendon School 0.7 miles, Meath Green Junior School 1.2 miles, Manorfield Primary and Nursery School 1.2 miles

Secondary Schools: Oakwood School 0.7 miles, Cornfield



Transport Information

Train Stations: Horley 1.1 miles, Salfords 1.5 miles, Gatwick Airport 1.9 miles



Address

Haine Close, Horley, Surrey, RH6



Directions

For directions to this property please contact us.



cubitt&west
Helping you move forwards

Call Horley Branch 01293 785338 ■ cubittandwest.co.uk



■ Legal advice should be taken to verify fixtures/fittings, planning, alterations and/or lease details ■ Appliances & services are untested, dimensions are approximate and floor plans are not to scale



20810994/20240813/TW/SI