



OVER 60?

Secure this property
for up to **59% less!**

Price

£280,000

Leasehold

2x  1x  1x 

**Elizabeth Court, Victoria
Road, Horley, Surrey,
RH6**

cubitt & west
Helping you move forwards



Main features

- Large ground floor flat with garage
- Town centre location convenient for shops and train station
- Recently decorated throughout to a great standard
- Both double bedrooms
- Large open plan lounge/diner

Accommodation

GROUND FLOOR

Entrance Hall

Lounge: 17'1 x 14'8 (5.21m x 4.47m)

Kitchen: 11'0 x 10'5 (3.36m x 3.18m)

Bathroom

Bedroom 1: 11'1 x 10'3 (3.38m x 3.13m)

Bedroom 2: 11'1 x 9'0 (3.38m x 2.75m)

Cloakroom

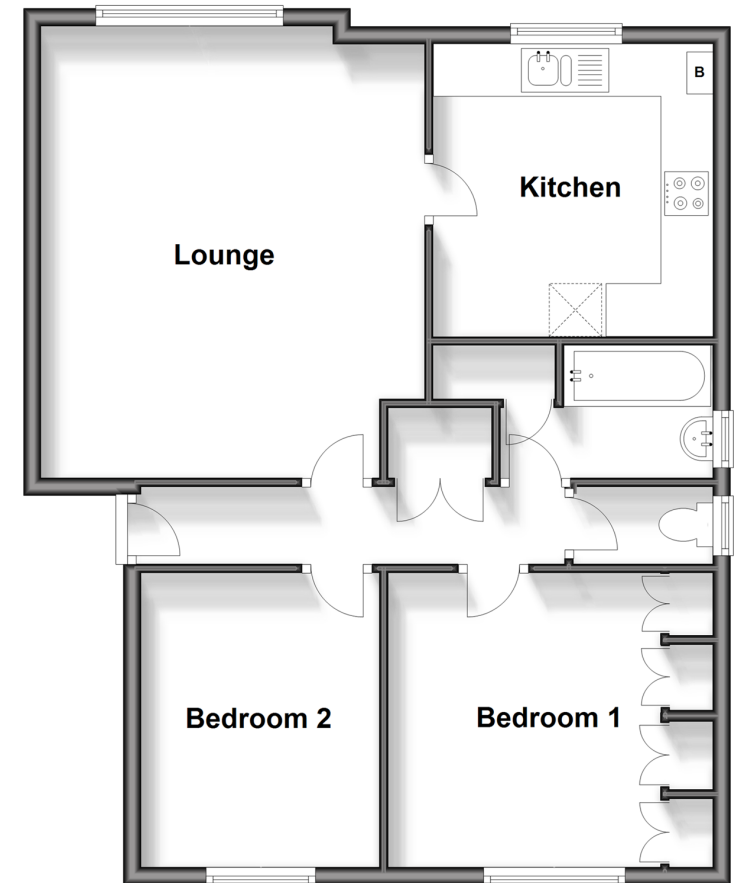
OUTSIDE

Communal Gardens

Garage

Ground Floor

Approx. 68.0 sq. metres (731.6 sq. feet)



Call Horley - 01293 785338 ■ cubittandwest.co.uk

- Legal advice should be taken to verify fixtures/fittings, planning, alterations and/or lease details
- Appliances & services are untested, dimensions are approximate and floor plans are not to scale
- Through a Homewise Home For Life Plan people aged 60+ can secure this property for up to 59% less, by purchasing a Lifetime Lease.



20810559/20240608/TP/SI