



**Price**  
**£500,000**

**Freehold**

3x  1x  2x 

**Chequers Drive, Horley,  
Surrey, RH6**

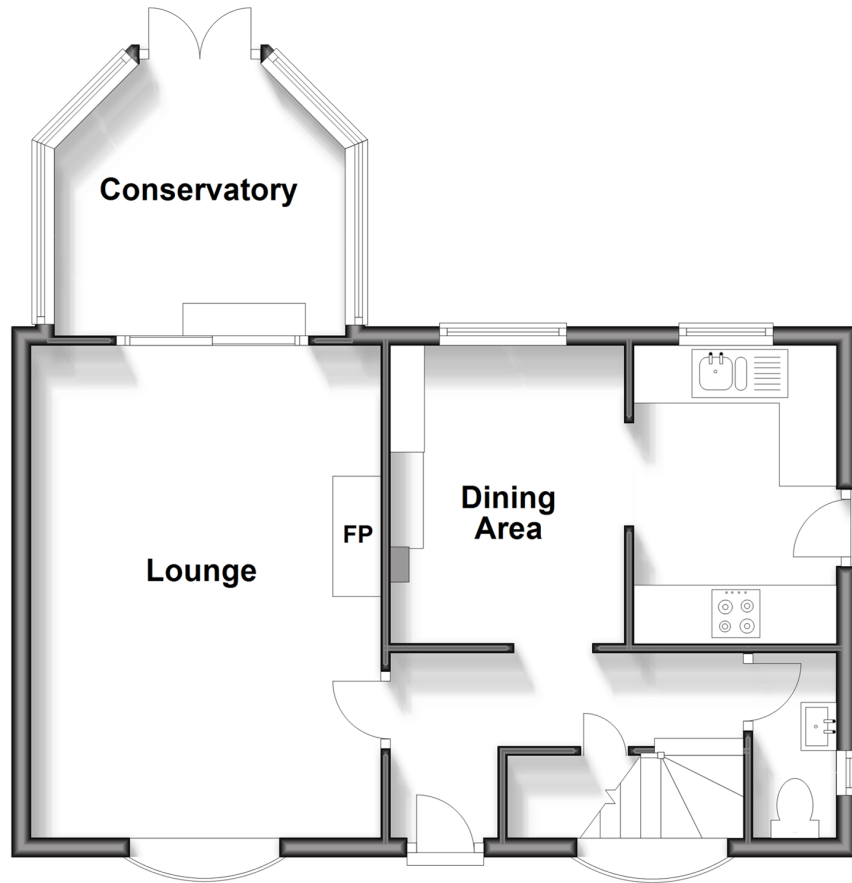
**OVER 60?**

Secure this property  
for up to **59% less!**

**cubitt & west**  
Helping you move forwards

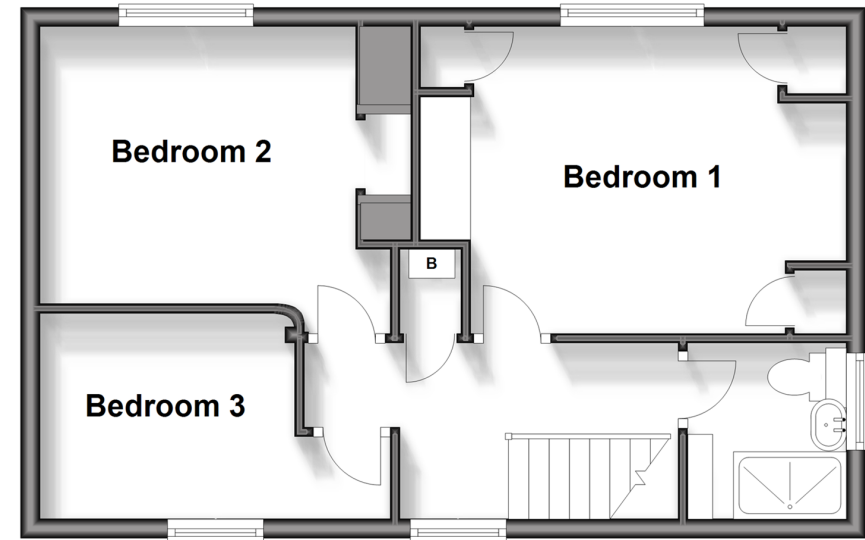
## Ground Floor

Approx. 51.5 sq. metres (554.3 sq. feet)



## First Floor

Approx. 43.0 sq. metres (462.9 sq. feet)



## Accommodation

### GROUND FLOOR

Hallway

Conservatory: 10'11 x 10'1 (3.33m x 3.08m)

Living Room: 16'11 x 11'11 (5.16m x 3.63m)

Dining Room: 11'2 x 7'1 (3.41m x 2.16m)

Kitchen: 11'2 x 7'0 (3.41m x 2.14m)

### FIRST FLOOR

Cloakroom: 6'2 x 3'0 (1.88m x 0.92m)

Shower Room: 6'3 x 5'6 (1.91m x 1.68m)

Bedroom 1: 14'5 x 10'3 (4.40m x 3.13m)

Bedroom 2

Bedroom 3: 8'10 x 7'1 (2.69m x 2.16m)



## Main features

- Ample driveway for parking
- Scope for extension (subject to planning permission)
- Well presented throughout the whole property
- Spacious and bright living area
- Beautifully maintained large rear garden with pond



### Nearest Schools

Primary Schools: Yattendon School 0.2 miles, Manorfield Primary and Nursery School 0.4 miles, Meath Green Junior School 0.5 miles

Secondary Schools: Oakwood School 0.6 miles, Cornfield



### Transport Information

Train Stations: Horley 0.7 miles, Salfords 1.6 miles, Gatwick Airport 1.6 miles



### Address

Chequers Drive, Horley, Surrey, RH6



### Directions

For directions to this property please contact us.



**cubitt&west**  
Helping you move forwards

Call Horley Branch 01293 785338 ■ [cubittandwest.co.uk](https://www.cubittandwest.co.uk)



- Legal advice should be taken to verify fixtures/fittings, planning, alterations and/or lease details
- Appliances & services are untested, dimensions are approximate and floor plans are not to scale
- Through a Homewise Home For Life Plan people aged 60+ can secure this property for up to 59% less, by purchasing a Lifetime Lease.

EPC RATING

CURRENT: D(63) POTENTIAL: C(79)

20810786/20240622/TP/AG