



**Price**  
**£500,000**

**Freehold**

3x  1x  1x 

**The Crescent, Horley,  
Surrey, RH6**

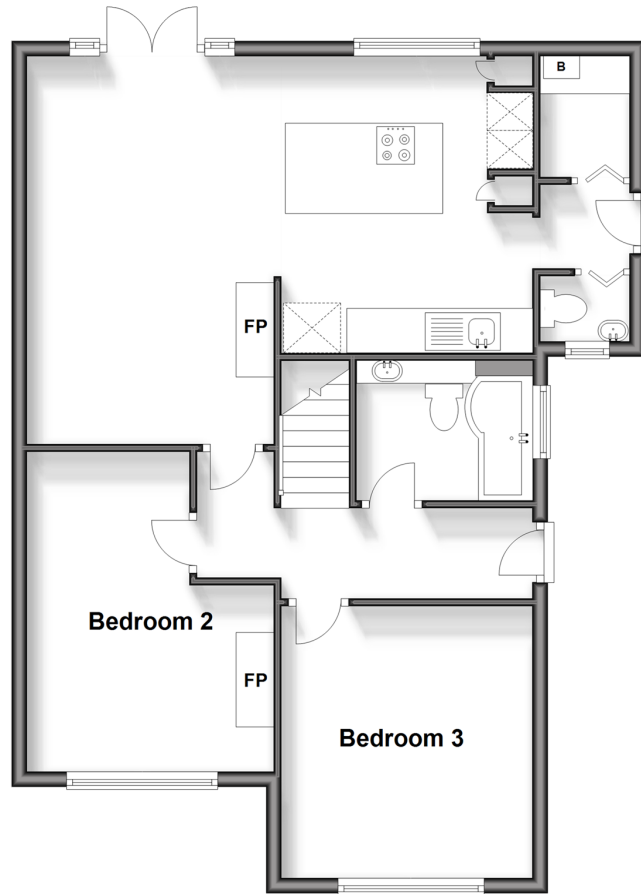
**OVER 60?**

Secure this property  
for up to **59% less!**

**cubitt & west**  
Helping you move forwards

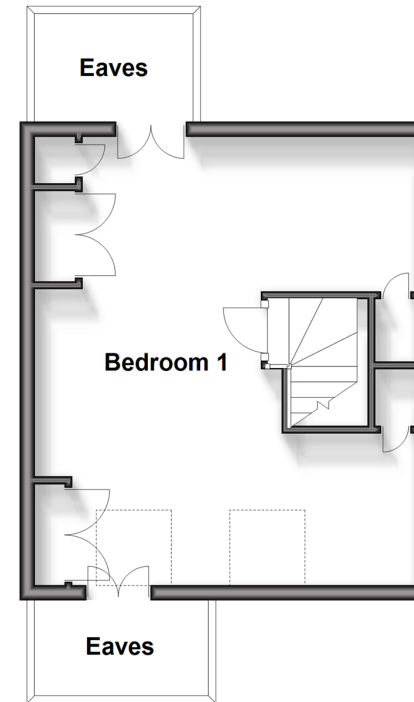
### Ground Floor

Approx. 73.5 sq. metres (790.7 sq. feet)



### First Floor

Approx. 30.2 sq. metres (325.1 sq. feet)



## Accommodation

### GROUND FLOOR

Entrance hall

Lounge/Kitchen/Diner: 22'4 x 18'8 (6.81m x 5.69m)

Cloakroom

Utility cupboard

Bedroom 2: 13'8 x 10'10 (4.17m x 3.30m)

Bedroom 3: 11'8 x 10'10 (3.56m x 3.30m)

### FIRST FLOOR

Bedroom 1: 19'4 x 16'6 (5.90m x 5.03m)

### OUTSIDE

Off Road Parking

Outbuilding 1: 17'4 x 12'4 (5.29m x 3.76m)

Outbuilding 2: 11'6 x 11'2 (3.51m x 3.41m)



## Main features

- Immaculately recently renovated
- Driveway for 2 cars
- Large low maintenance garden with decking and two large outbuildings, currently used as extra lounge and gym respectively
- All 3 bedrooms are doubles
- Kitchen and bathroom are built at an incredibly high spec !

## Nearest Schools

Primary Schools: Manorfield Primary and Nursery School 0.9 miles, Yattendon School 0.9 miles, Meath Green Junior School 1.6 miles

Secondary Schools: Oakwood School 0.8 miles, Hazelwick

## Transport Information

Train Stations: Horley 0.8 miles, Gatwick Airport 2.3 miles, Salfords 3.7 miles

## Address

The Crescent, Horley, Surrey, RH6

## Directions

For directions to this property please contact us.



**cubitt&west**  
Helping you move forwards

Call Horley Branch 01293 785338 ■ [cubittandwest.co.uk](https://www.cubittandwest.co.uk)



■ Legal advice should be taken to verify fixtures/fittings, planning, alterations and/or lease details ■ Appliances & services are untested, dimensions are approximate and floor plans are not to scale  
■ Through a Homewise Home For Life Plan people aged 60+ can secure this property for up to 59% less, by purchasing a Lifetime Lease.

EPC RATING	CURRENT:	POTENTIAL:
	D(68)	B(35)

20810961/20240608/TP/AG