



**Guide Price**  
**£275,000**

**Leasehold**

2x  2x  1x 

**Russell Square, Russells  
Crescent, Horley,  
Surrey, RH6**

**OVER 60?**

Secure this property  
for up to **59% less!**

**cubitt & west**  
Helping you move forwards





## Main features

- No chain
- Walking distance to train station and local amenities
- Beautifully presented and recently decorated throughout
- Outside terrace area
- Allocated parking

## Accommodation

### FIRST FLOOR

Hallway

Kitchen/Living & Dining Room: 22'10 x 13'2  
(6.96m x 4.02m)

Bedroom 1: 15'7 x 9'2 (4.75m x 2.80m)

En suite: 7'0 x 6'0 (2.14m x 1.83m)

Bedroom 2: 11'10 x 11'2 (3.61m x 3.41m)

Bathroom: 6'11 x 6'10 (2.11m x 2.08m)

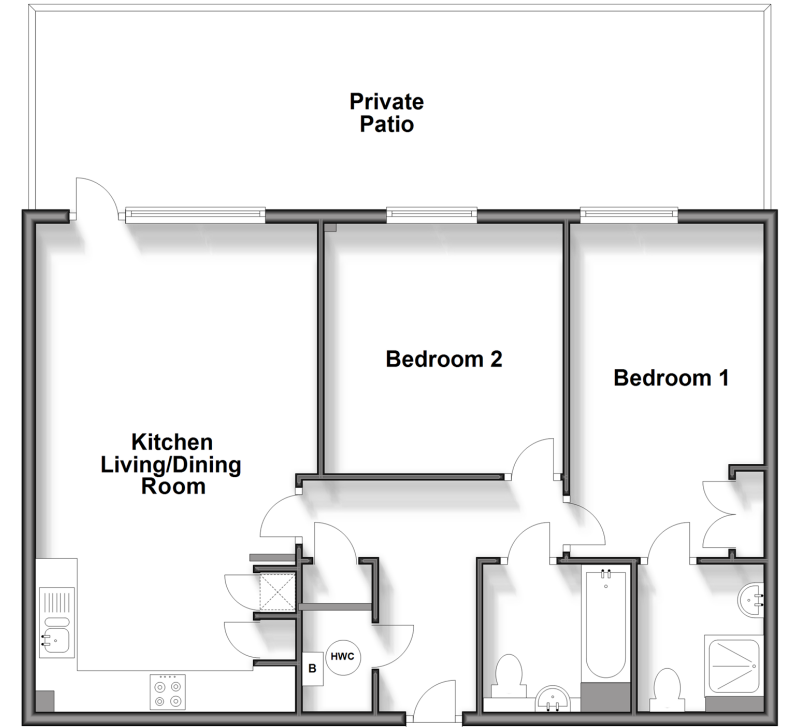
### OUTSIDE

Terrace

Car Park

Communal Gardens

**First Floor**  
Approx. 72.1 sq. metres (775.7 sq. feet)



**Call Horley - 01293 785338 ■ cubittandwest.co.uk**

- Legal advice should be taken to verify fixtures/fittings, planning, alterations and/or lease details
- Appliances & services are untested, dimensions are approximate and floor plans are not to scale
- Through a Homewise Home For Life Plan people aged 60+ can secure this property for up to 59% less, by purchasing a Lifetime Lease.



20810958/20240606/BS1/AG