



Price
£350,000

Leasehold

3x 🏠 2x 🚗 1x 🚗

**Woodpecker House,
Webber Street, Horley,
Surrey, RH6**

OVER 60?

Secure this property
for up to **59% less!**

cubitt & west
Helping you move forwards



Main features

- Guide Price of £350,000 to £375,000
- Approximately 975 sq ft
- NHBC warranty in place
- Excess of 115 years on the lease
- Large first floor apartment with communal parking
- Perfect for first time buyers and investors

Accommodation

FIRST FLOOR

Entrance Hallway

Kitchen/Lounge/Diner & Study: 25'1 (7.65m) x 18'1 (5.52m) narrowing to 13'0 (3.97m)

Bedroom 1: 12'0 x 10'0 (3.66m x 3.05m)

En suite: 8'0 x 5'0 (2.44m x 1.53m)

Bedroom 2: 12'0 x 8'1 (3.66m x 2.47m)

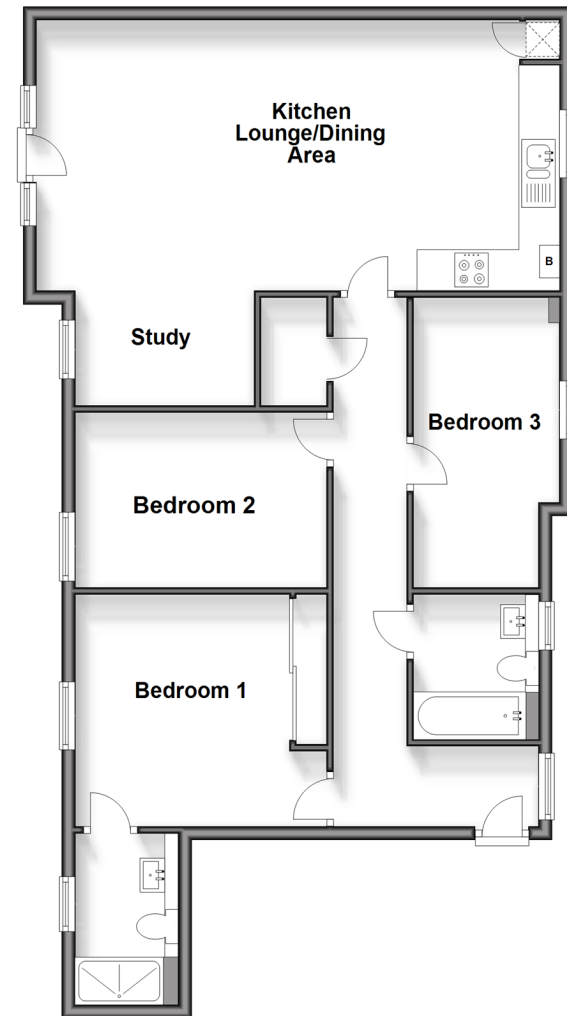
Bedroom 3: 13'1 x 7'0 (3.99m x 2.14m)

Bathroom: 7'0 x 7'0 (2.14m x 2.14m)

OUTSIDE

Allocated Parking

First Floor
Approx. 90.6 sq. metres (975.5 sq. feet)



Call Horley - 01293 785338 ■ cubittandwest.co.uk

- Legal advice should be taken to verify fixtures/fittings, planning, alterations and/or lease details
- Appliances & services are untested, dimensions are approximate and floor plans are not to scale
- Through a Homewise Home For Life Plan people aged 60+ can secure this property for up to 59% less, by purchasing a Lifetime Lease.



20810910/20240322/TP/AG