



Price
£625,000

Freehold

3x  2x  2x 

**Wolverton Gardens,
Horley, Surrey, RH6**

OVER 60?

Secure this property
for up to **59% less!**

cubitt & west
Helping you move forwards



Main features

- Extended detached bungalow
- Well maintained
- Large spacious rear garden with driveway and garage
- Central heating
- Conveniently located close to Horley Town Centre and train station

Accommodation

Reception Hall

Cloakroom

Lounge: 21'1" x 13'1" (6.43m x 3.99m)

Dining Room: 13'1" x 8'0" (3.99m x 2.44m)

Kitchen: 13'1" x 8'1" (3.99m x 2.47m)

Utility Room: 10'1" x 10'0" (3.08m x 3.05m)

Bedroom 1: 17'1" x 8'1" (5.21m x 2.47m)

En Suite

Bedroom 2: 11'1" x 10'0" (3.38m x 3.05m)

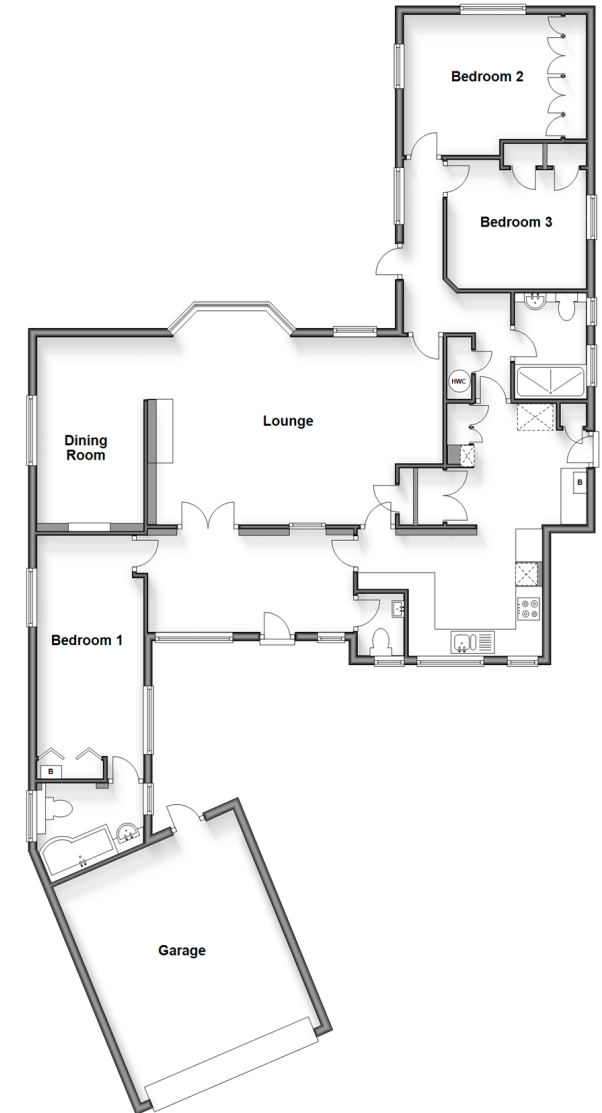
Bedroom 3: 10'1" x 9'1" (3.08m x 2.77m)

Shower Room

OUTSIDE

Garage

Ground Floor
Approx. 150.8 sq. metres (1622.8 sq. feet)



Call Horley - 01293 785338 ■ cubittandwest.co.uk

- Legal advice should be taken to verify fixtures/fittings, planning, alterations and/or lease details
- Appliances & services are untested, dimensions are approximate and floor plans are not to scale
- Through a Homewise Home For Life Plan people aged 60+ can secure this property for up to 59% less, by purchasing a Lifetime Lease.



20810698/20240328/SS/AG