



Price
£650,000

Freehold

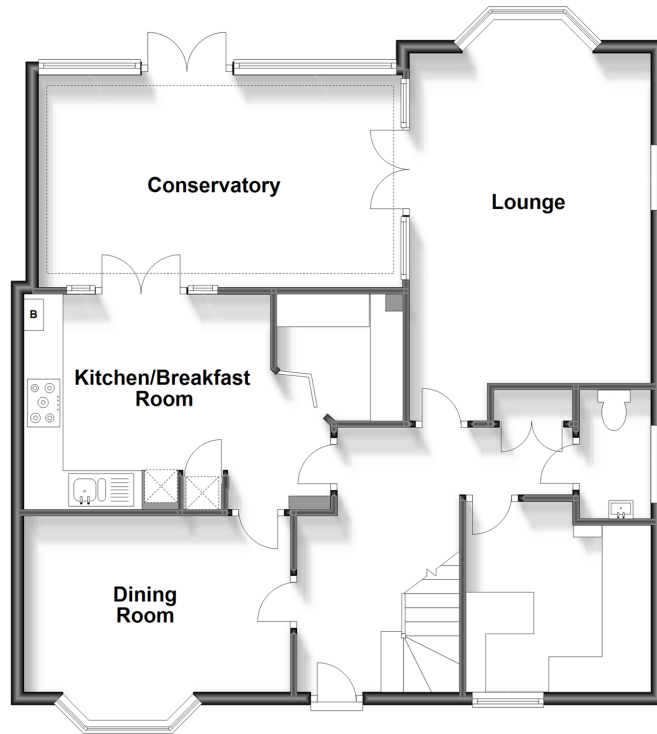
4x  2x  4x 

**Peppiatt Close, Horley,
Surrey, RH6**

cubitt & west
Helping you move forwards

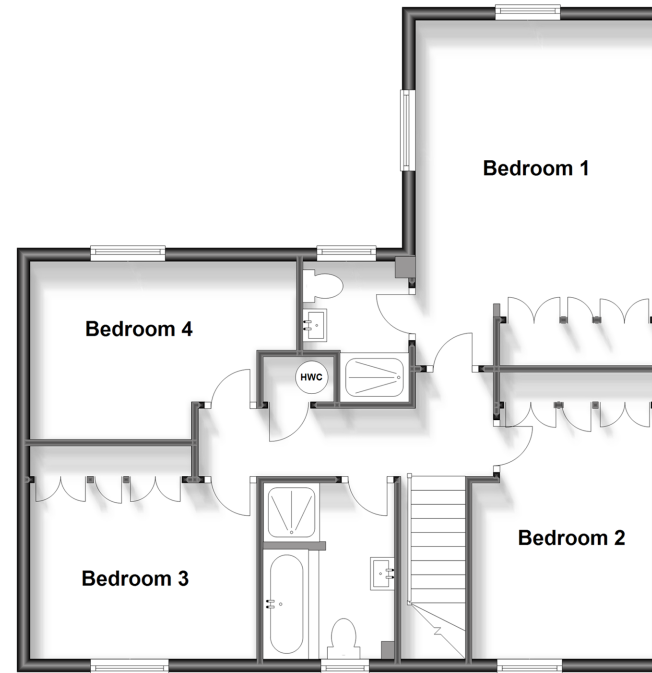
Ground Floor

Approx. 92.7 sq. metres (997.4 sq. feet)



First Floor

Approx. 72.3 sq. metres (777.7 sq. feet)



Accommodation

GROUND FLOOR

Entrance Hall

Lounge: 18'9 into bay x 12'6 (5.72m x 3.81m)

Dining Room: 13'4 into bay x 11'1 (4.07m x 3.38m)

Study: 9'4 x 9'1 (2.85m x 2.77m)

Conservatory : 11'8 x 10'8 (3.56m x 3.25m)

Kitchen/breakfast room: 15'5 x 10'8 (4.70m x 3.25m)

Utility Room

Cloakroom

FIRST FLOOR

Landing

Bedroom 1: 17'3 x 12'1 (5.26m x 3.69m)

En-suite

Bedroom 2: 12'1 up to fitted wardrobes x 9'3 (3.69m x 2.82m)

Bedroom 3: 11'4 x 8'9 up to fitted wardrobes (3.46m x 2.67m)

Bedroom 4: 13'4 x 8'9 (4.07m x 2.67m)

Bathroom

OUTSIDE

Off Road Parking

Garage

Rear Garden



Main features

- Sought after Acres development
- Four reception rooms
- Garage and off road parking
- Family bathroom and en-suite shower room to main bedroom
- Landscaped rear garden and views over fields to the front

Nearest Schools

Primary Schools: Yattendon School 0.7 miles, Meath Green Junior School 1.1 miles, Manorfield Primary and Nursery School 1.1 miles
Secondary Schools: Oakwood School 0.7 miles, Cornfield School 2.4 miles, Reigate School 3.4 miles

Transport Information

Train Stations: Horley 1.1 miles, Salfords 1.4 miles, Gatwick Airport 1.9 miles

Address

Peppiatt Close, Horley, Surrey, RH6

Directions

For directions to this property please contact us.



cubitt&west
Helping you move forwards

Call Horley Branch 01293 785338 ■ cubittandwest.co.uk



■ Legal advice should be taken to verify fixtures/fittings, planning, alterations and/or lease details ■ Appliances & services are untested, dimensions are approximate and floor plans are not to scale

20809645/20240502/BS1/AG