



Price
£415,000

Freehold

3x  2x  1x 

**Harmony Road, Horley,
Surrey, RH6**

cubitt&west
Helping you move forwards



Main features

- Located on popular Westvale development
- 2 allocated parking spaces
- Landscaped rear garden
- En-suite shower room to main bedroom
- Stylish kitchen with granite work surfaces
- No chain

Accommodation

GROUND FLOOR

Entrance Hall

Lounge: 14'0 x 11'10 (4.27m x 3.61m)

Kitchen/Dining Room: 15'0 x 8'11 (4.58m x 2.72m)

Cloakroom

FIRST FLOOR

Landing

Bedroom 1: 17'11 x 9'0 (5.46m x 2.75m)

En-suite Shower Room

Bedroom 2: 9'0 x 7'10 (2.75m x 2.39m)

Bedroom 3: 7'10 x 6'0 (2.39m x 1.83m)

Bathroom

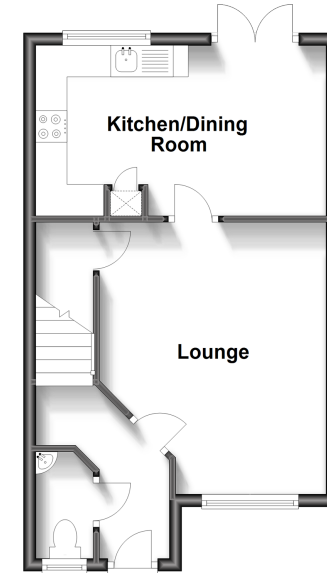
OUTSIDE

2 Allocated Parking Spaces

Rear Garden

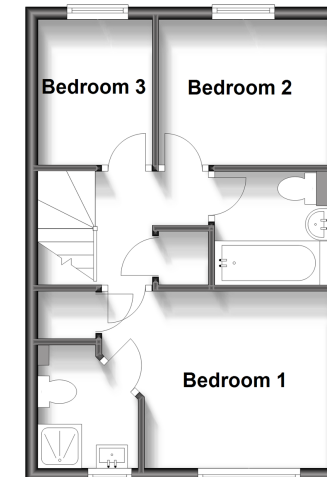
Ground Floor

Approx. 35.3 sq. metres (380.0 sq. feet)



First Floor

Approx. 33.1 sq. metres (356.5 sq. feet)



Call Horley - 01293 785338 ■ cubittandwest.co.uk

- Legal advice should be taken to verify fixtures/fittings, planning, alterations and/or lease details
- Appliances & services are untested, dimensions are approximate and floor plans are not to scale



20810785/20240108/TP/AG