



East View, Yeadon Leeds LS19 7AD

welcome to

East View, Yeadon Leeds

A two double bedroom mid terrace stone house, really well presented throughout and arranged over three floors and having a useful STORAGE CELLAR. The property also benefits from a low maintenance garden and space for OFF STREET PARKING.



Entrance Porch

Enter from the front into the porch with a tiled floor and uPVC double glazed windows to either side.

Lounge

14' 8" x 13' 1" Into recess (4.47m x 3.99m Into recess)
A good size room having a gas burner set into an exposed brick fireplace with a stone hearth, carpet flooring, radiator, a uPVC double glazed stained glass window and door to the front. The stairs to the first floor rise from the lounge.

Kitchen

10' 2" x 7' 1" (3.10m x 2.16m)
A well presented kitchen offering a range of wall and base units with high gloss doors and wood effect worksurfaces incorporating a sink, drainer and gas hob with a tiled splashback. Integrated appliances include an electric oven, fridge freezer and there is space for a washing machine. The work surface continues to create a breakfast bar, perfect for grabbing a quick snack. The room also benefits from vinyl flooring, radiator, a uPVC double glazed window and door to the rear.

Cellar

A great storage space with light, power, radiator and housing the meters.

Landing

The stairs rise from the lounge onto the landing with doors to a double bedroom, bathroom and stairs to the second floor.

First Floor Bedroom One

14' 7" x 13' 4" Into recess (4.45m x 4.06m Into recess)
A double bedroom positioned to the front elevation with carpet flooring, radiator and a uPVC double glazed window.

Bathroom

The bathroom is part tiled and fitted with a three piece suite comprising of a panel bath with shower above, wash hand basin with vanity unit below, wc,

radiator and a uPVC double glazed window to the rear.

Second Floor Bedroom Two

18' 11" x 12' 1" Plus recess (5.77m x 3.68m Plus recess)
A spacious double bedroom with built-in wardrobes, storage space/office area under the eaves, wood flooring, radiator, access to the loft and a uPVC double glazed window to the front.

Externally

To the front of the property there is a paved driveway providing off street parking and a small pebbled seating area to the side.



view this property online williamhbrown.co.uk/Property/YEA105889



welcome to

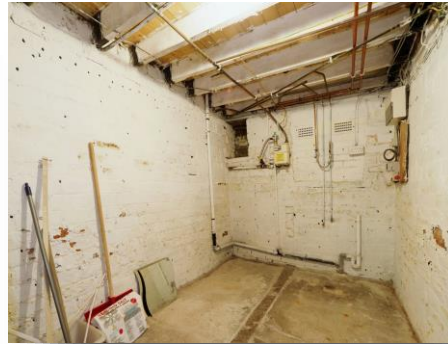
East View, Yeadon Leeds

- Mid Terrace Stone House
- Two Double Bedrooms
- Arranged Over Three Floors
- Off Street Parking
- Cellar

Tenure: Freehold EPC Rating: D

offers in the region of

£200,000



Please note the marker reflects the
postcode not the actual property

view this property online williamhbrown.co.uk/Property/YEA105889



Property Ref:
YEA105889 - 0004

1. MONEY LAUNDERING REGULATIONS Intending purchasers will be asked to produce identification documentation at a later stage and we would ask for your co-operation in order that there is no delay in agreeing the sale. 2. These particulars do not constitute part or all of an offer or contract. 3. The measurements indicated are supplied for guidance only and as such must be considered incorrect. Potential buyers are advised to recheck measurements before committing to any expense. 4. We have not tested any apparatus, equipment, fixtures or services and it is in the buyers interest to check the working condition of any appliances. 5. Where an EPC, or a Home Report (Scotland only) is held for this property, it is available for inspection at the branch by appointment. If you require a printed version of a Home Report, you will need to pay a reasonable production charge reflecting printing and other costs. 6. We are not able to offer an opinion either written or verbal on the content of these reports and this must be obtained from your legal representative. 7. Whilst we take care in preparing these reports, a buyer should ensure that his/her legal representative confirms as soon as possible all matters relating to title including the extent and boundaries of the property and other important matters before exchange of contracts.

William H Brown is a trading name of Sequence (UK) Limited which is registered in England and Wales under company number 4268443, Registered Office is Cumbria House, 16-20 Hockliffe Street, Leighton Buzzard, Bedfordshire, LU7 1GN. VAT Registration Number is 500 2481 05.



william h brown



0113 250 6996



Yeadon@williamhbrown.co.uk



27 High Street, Yeadon, LEEDS, West Yorkshire,
LS19 7SP



williamhbrown.co.uk