



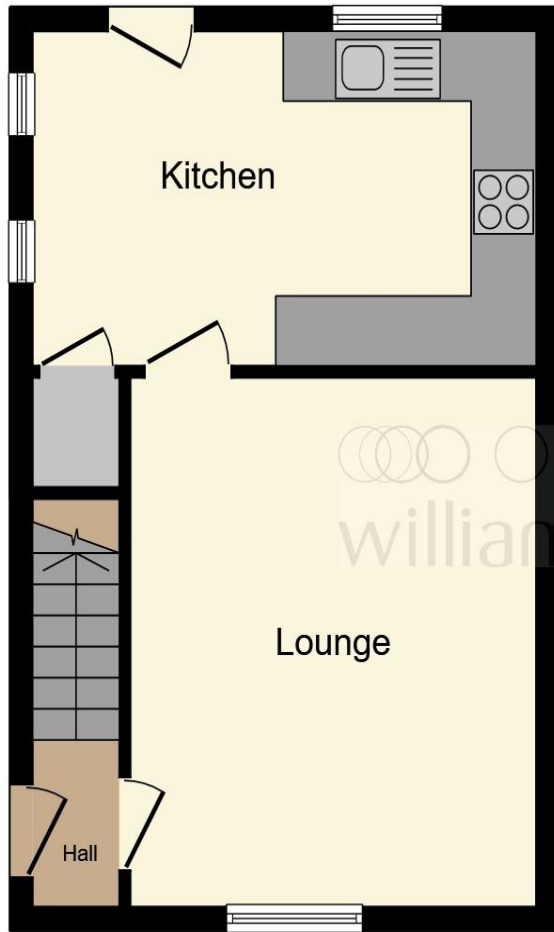
Jubilee Walk, Wisbech, PE13 3HW

Welcome to

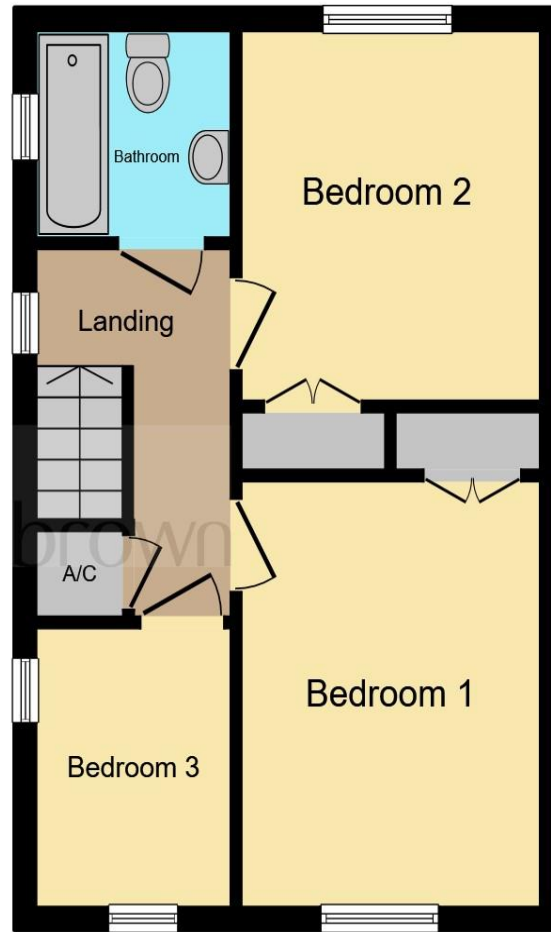
Jubilee Walk, Wisbech

This three-bedroom end-of-terrace house on Jubilee Walk, Wisbech, is an excellent investment opportunity with tenants already in place, ensuring immediate rental income. Situated at the end of the row, this property offers additional privacy & a larger rear garden, making it an attractive option for tenants. The home also includes a convenient garage for added storage or parking. With steady rental potential and low-maintenance features, this property is ideal for investors seeking a straightforward, income-generating asset.





Ground Floor



First Floor

Lounge

11' 9" x 15' (3.58m x 4.57m)

Kitchen / Diner

15' x 9' 6" Max (4.57m x 2.90m Max)

Bedroom One

9' x 12' 1" (2.74m x 3.68m)

Bedroom Two

9' x 10' 5" (2.74m x 3.17m)

Bedroom Three

5' 10" x 7' 10" (1.78m x 2.39m)

Bathroom

Outside

This floor plan is for illustrative purposes only. It is not drawn to scale. Any measurements, floor areas (including any total floor area), openings and orientation are approximate. No details are guaranteed, they cannot be relied upon for any purpose and they do not form part of any agreement. No liability is taken for any error, omission or misstatement. A party must rely upon its own inspection(s). Powered by www.focalagent.com

Welcome to

Jubilee Walk, Wisbech

- ** Reduced From £170,000 To £160,000 oieo **
- Investment Property
- End of Terrace
- 3 Bedrooms
- Garage in Block

Tenure: Freehold EPC Rating: C
Council Tax Band: A

offers in excess of

£150,000



Please note the marker reflects the postcode not the actual property

view this property online williamhbrown.co.uk/Property/WSB120988



Property Ref:
WSB120988 - 0006

1. MONEY LAUNDERING REGULATIONS Intending purchasers will be asked to produce identification documentation at a later stage and we would ask for your co-operation in order that there is no delay in agreeing the sale. 2. These particulars do not constitute part or all of an offer or contract. 3. The measurements indicated are supplied for guidance only and as such must be considered incorrect. Potential buyers are advised to recheck measurements before committing to any expense. 4. We have not tested any apparatus, equipment, fixtures or services and it is in the buyers interest to check the working condition of any appliances. 5. Where an EPC, or a Home Report (Scotland only) is held for this property, it is available for inspection at the branch by appointment. If you require a printed version of a Home Report, you will need to pay a reasonable production charge reflecting printing and other costs. 6. We are not able to offer an opinion either written or verbal on the content of these reports and this must be obtained from your legal representative. 7. Whilst we take care in preparing these reports, a buyer should ensure that his/her legal representative confirms as soon as possible all matters relating to title including the extent and boundaries of the property and other important matters before exchange of contracts.

William H Brown is a trading name of Sequence (UK) Limited which is registered in England and Wales under company number 4268443, Registered Office is Cumbria House, 16-20 Hockliffe Street, Leighton Buzzard, Bedfordshire, LU7 1GN. VAT Registration Number is 500 2481 05.



william h brown



01945 464451



Wisbech@williamhbrown.co.uk



20 High Street, WISBECH, Cambridgeshire,
PE13 1DE



williamhbrown.co.uk