



Merrifield Court, Welwyn Garden City AL7 4SH

welcome to

Merrifield Court, Welwyn Garden City

A beautifully presented two-bedroom apartment in the highly sought-after Merrifield Court, Welwyn Garden City. Perfectly positioned just moments from local amenities, reputable schools, and excellent transport links, this home combines convenience with contemporary style. The welcoming entrance hall, complete with generous storage, opens into a bright and spacious open-plan living and dining area. A Juliet balcony floods the room with natural light, creating an inviting space for relaxation or entertaining. The sleek, fully fitted kitchen is designed for modern living, while the main bedroom enjoys the luxury of its own en-suite shower room. A second well-proportioned bedroom and a stylish family bathroom complete the accommodation, offering both practicality and comfort. Merrifield Court is set within a beautifully maintained development, surrounded by landscaped grounds. Residents benefit from a dedicated children's play area and the added advantage of allocated parking, ensuring both convenience and peace of mind. This thoughtful combination makes the development particularly appealing to young families and professionals alike, while fostering a welcoming community environment.



Entrance Hall

Storage cupboard x 2, carpet.

Lounge/Dining Room

19' 6" x 13' 7" (5.94m x 4.14m)

Double glazed window x 2, Juliet balcony, carpet, electric heater.

Kitchen

8' 4" x 7' 1" (2.54m x 2.16m)

Double glazed window, wall and base units, sink/drain, space for appliances.

Bedroom One

12' 7" x 11' 2" (3.84m x 3.40m)

Double glazed window, carpet, electric heater.

En-Suite

Double glazed window, W/C, wash hand basin, shower, tiled.

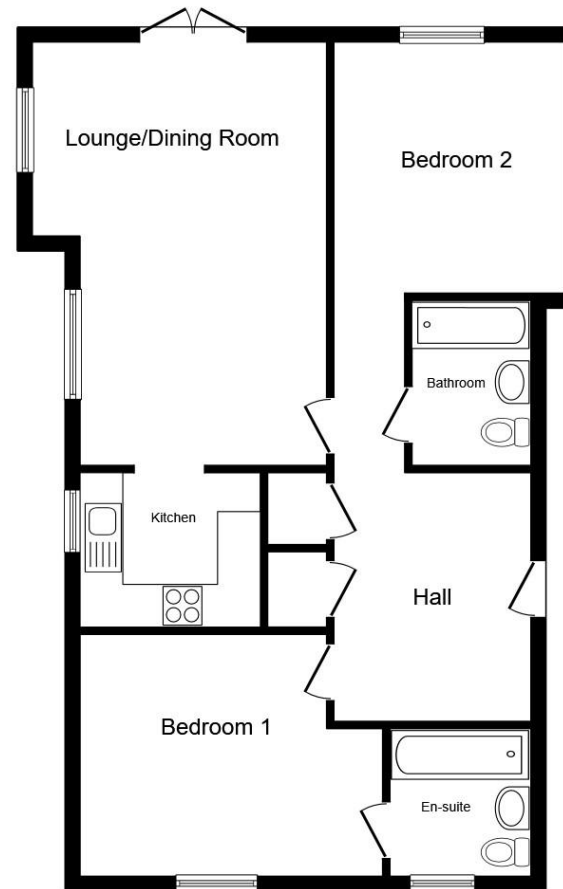
Bedroom Two

11' 7" x 10' (3.53m x 3.05m)

Double glazed window, carpet.

Bathroom

Bath, W/C, wash hand basin, heated towel rail.



Total floor area 77.7 m² (837 sq.ft.) approx

This floor plan is for illustrative purposes only. It is not drawn to scale. Any measurements, floor areas (including any total floor area), openings and orientation are approximate. No details are guaranteed, they cannot be relied upon for any purpose and they do not form part of any agreement. No liability is taken for any error, omission or misstatement. A party must rely upon its own inspection(s). Powered by www.propertybox.io



welcome to

Merrifield Court, Welwyn Garden City

- Two Bedroom Apartment
- Upper Floor
- Allocated Parking
- Bathroom and En-Suite Shower Room
- Children's Play Area

Tenure: Leasehold EPC Rating: C

Council Tax Band: C Service Charge: 2628.00

Ground Rent: 300.00

guide price

£290,000



check out more properties at williamhbrown.co.uk

This is a Leasehold property with details as follows; Term of Lease 150 years from 01 Mar 2005. Should you require further information please contact the branch. Please Note additional fees could be incurred for items such as Leasehold packs.



Property Ref:
WGN109410 - 0002

1. MONEY LAUNDERING REGULATIONS Intending purchasers will be asked to produce identification documentation at a later stage and we would ask for your co-operation in order that there is no delay in agreeing the sale. 2. These particulars do not constitute part or all of an offer or contract. 3. The measurements indicated are supplied for guidance only and as such must be considered incorrect. Potential buyers are advised to recheck measurements before committing to any expense. 4. We have not tested any apparatus, equipment, fixtures or services and it is in the buyers interest to check the working condition of any appliances. 5. Where an EPC, or a Home Report (Scotland only) is held for this property, it is available for inspection at the branch by appointment. If you require a printed version of a Home Report, you will need to pay a reasonable production charge reflecting printing and other costs. 6. We are not able to offer an opinion either written or verbal on the content of these reports and this must be obtained from your legal representative. 7. Whilst we take care in preparing these reports, a buyer should ensure that his/her legal representative confirms as soon as possible all matters relating to title including the extent and boundaries of the property and other important matters before exchange of contracts.

William H Brown is a trading name of Sequence (UK) Limited which is registered in England and Wales under company number 4268443, Registered Office is Cumbria House, 16-20 Hockliffe Street, Leighton Buzzard, Bedfordshire, LU7 1GN. VAT Registration Number is 500 2481 05.

Please note the marker reflects the postcode not the actual property


william h brown



01707 324361



WelwynGardenCity@williamhbrown.co.uk



53 Wigmores North, WELWYN GARDEN CITY,
Hertfordshire, AL8 6PG



williamhbrown.co.uk