



Dragon Road, Hatfield AL10 9NZ

welcome to

Dragon Road, Hatfield

This fantastic five bedroom detached home is located in the popular Salisbury village in Hatfield. Perfectly situated local to Howe Dell Primary School, which is rated "outstanding" with Ofstead and close to Hatfield business park, Hertfordshire University and David Lloyd Club. The ground floor boasts cloakroom, lounge with French doors to the rear garden, snug, large kitchen/diner and utility room. The first floor has master bedroom with walk-in dressing area and en-suite, two further bedrooms and family bathroom. On the second floor are two large bedrooms with dual aspect windows and built in storage plus a shower room. Externally there are front and rear gardens and side access to a double car port. .



Entrance Hall

Tiled flooring, storage cupboard, Nest heating.

Cloakroom

Tiled flooring, wash hand basin, W/C, radiator.

Lounge

25' 10" x 12' 5" (7.87m x 3.78m)

Bay window, French doors to garden, gas fire place, radiator x 3.

Snug

12' x 11' 7" (3.66m x 3.53m)

Porcelain tiled flooring, bi-fold doors, sky-lights, radiator.

Kitchen/ Diner

25' 8" x 12' 5" (7.82m x 3.78m)

Bay window to front, porcelain tiled flooring, integrated double oven/microwave/dishwasher, wall radiator, island, electric hob,

Utility Room

7' 6" x 5' 11" (2.29m x 1.80m)

Porcelain tiled flooring, storage cupboard, sink.

Landing

Carpet, airing cupboard, radiator.

Bedroom One

17' 5" x 10' 9" (5.31m x 3.28m)

Double glazed window to front, carpet, built in wardrobes, walk-in dressing room, radiator.

En-Suite

Double glazed window to rear, tiled flooring, bath, shower cubicle, wash hand basin, heated towel rail.

Bedroom Two

16' x 12' 10" (4.88m x 3.91m)

Dual aspect windows, storage cupboard, carpet, radiator.

Bedroom Three

16' x 12' 9" (4.88m x 3.89m)

Dual aspect windows, carpet, storage cupboards, radiator.

Bedroom Four

12' 5" x 9' 7" (3.78m x 2.92m)

Double glazed window to front, storage cupboard, radiator.

Bedroom Five

12' 3" x 10' 4" (3.73m x 3.15m)

Double glazed window to rear, carpet, built in wardrobe.

Bathroom

Double glazed window, bath, W/C, wash hand basin, carpet, radiator.

Bathroom

Sky-light, W/C, shower cubicle, wash hand basin, laminate wood flooring.

Outside

Side access to double car port.



Total floor area 253.8 sq.m. (2,732 sq.ft.) approx

This floor plan is for illustrative purposes only. It is not drawn to scale. Any measurements, floor areas (including any total floor area), openings and orientation are approximate. No details are guaranteed, they cannot be relied upon for any purpose and they do not form part of any agreement. No liability is taken for any error, omission or misstatement. A party must rely upon its own inspection(s). Powered by www.focalagent.com



check out more properties at williamhbrown.co.uk



welcome to

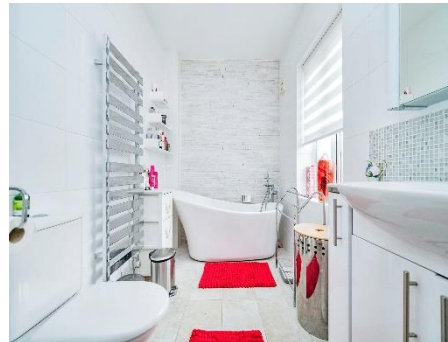
Dragon Road, Hatfield

- Detached House
- Five Bedrooms
- Three Bathrooms & Cloakroom
- Master Bedroom with Dressing Room & En-Suite
- Utility Room

Tenure: Freehold EPC Rating: C

guide price

£775,000



check out more properties at williamhbrown.co.uk

Please note the marker reflects the postcode not the actual property



Property Ref:
WGN108479 - 0003

1. MONEY LAUNDERING REGULATIONS Intending purchasers will be asked to produce identification documentation at a later stage and we would ask for your co-operation in order that there is no delay in agreeing the sale. 2. These particulars do not constitute part or all of an offer or contract. 3. The measurements indicated are supplied for guidance only and as such must be considered incorrect. Potential buyers are advised to recheck measurements before committing to any expense. 4. We have not tested any apparatus, equipment, fixtures or services and it is in the buyers interest to check the working condition of any appliances. 5. Where an EPC, or a Home Report (Scotland only) is held for this property, it is available for inspection at the branch by appointment. If you require a printed version of a Home Report, you will need to pay a reasonable production charge reflecting printing and other costs. 6. We are not able to offer an opinion either written or verbal on the content of these reports and this must be obtained from your legal representative. 7. Whilst we take care in preparing these reports, a buyer should ensure that his/her legal representative confirms as soon as possible all matters relating to title including the extent and boundaries of the property and other important matters before exchange of contracts.

William H Brown is a trading name of Sequence (UK) Limited which is registered in England and Wales under company number 4268443, Registered Office is Cumbria House, 16-20 Hockliffe Street, Leighton Buzzard, Bedfordshire, LU7 1GN. VAT Registration Number is 500 2481 05.


william h brown



01707 324361



WelwynGardenCity@williamhbrown.co.uk



53 Wigmore North, WELWYN GARDEN CITY,
Hertfordshire, AL8 6PG



williamhbrown.co.uk