



Long Ley, Welwyn Garden City AL7 2HE

welcome to

Long Ley, Welwyn Garden City

**** Guide Price £500,000 - £525,000 **** This fantastic CHAIN FREE link-detached three bedroom home is situated in the popular area of Panshanger in Welwyn Garden City with great commuter links via the A414, A1(M), and mainline rail links in to London. The property offers an entrance hall with downstairs cloakroom, large lounge/diner, a fully fitted kitchen and utility room. Upstairs boasts three bedrooms and family bathroom. Externally the property provides front and rear gardens and off street parking with garage.



Cloakroom

Carpet, W/C, wash hand basin.

Lounge

13' 9" x 13' 5" (4.19m x 4.09m)

Double glazed window, carpet, radiator, electric fire place.

Dining Room

10' 7" x 9' 5" (3.23m x 2.87m)

Sliding doors to garden, carpet, radiator.

Kitchen

10' 10" x 10' 6" (3.30m x 3.20m)

Double glazed window to rear, carpet tiles, sink, worktops, radiator, serving hatch.

Utility Room

10' 11" x 9' 11" (3.33m x 3.02m)

Carpet tiles, radiator, sink, boiler.

Bedroom One

13' 9" x 12' 11" (4.19m x 3.94m)

Double glazed window to front, carpet, radiator, built in wardrobes.

Bedroom Two

13' 10" x 9' 9" (4.22m x 2.97m)

Double glazed window to rear, carpet, radiator.

Bedroom Three

9' 8" x 7' 9" (2.95m x 2.36m)

Double glazed window to front, carpet, built in wardrobe.

Bathroom

Double glazed window to rear, bath, wash hand basin, W/C, radiator.

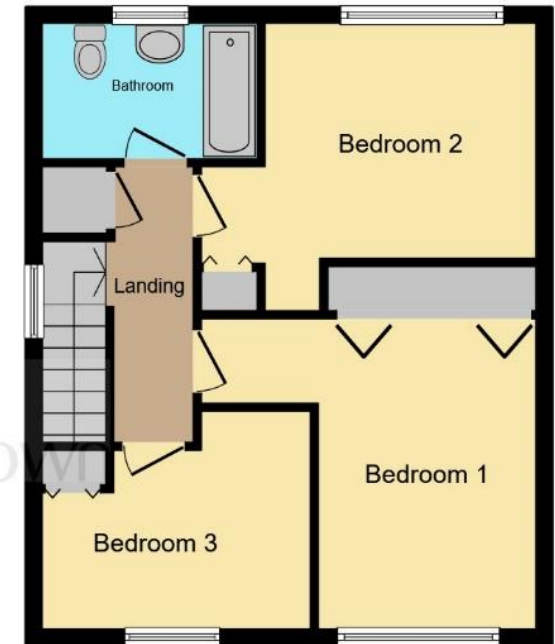
Garage

19' 9" x 9' 11" (6.02m x 3.02m)

Electric.



Ground Floor



First Floor

Total floor area 126.5 m² (1,362 sq.ft.) approx

This floor plan is for illustrative purposes only. It is not drawn to scale. Any measurements, floor areas (including any total floor area), openings and orientation are approximate. No details are guaranteed, they cannot be relied upon for any purpose and they do not form part of any agreement. No liability is taken for any error, omission or misstatement. A party must rely upon its own inspection(s). Powered by www.focalagent.com



check out more properties at williamhbrown.co.uk



welcome to

Long Ley, Welwyn Garden City

- CHAIN FREE
- Link Detached
- Driveway & Garage
- Three Bedrooms
- Front & Rear Garden

Tenure: Freehold EPC Rating: C

guide price

£500,000



check out more properties at williamhbrown.co.uk

Please note the marker reflects the postcode not the actual property



Property Ref:
WGN108150 - 0003

1. MONEY LAUNDERING REGULATIONS Intending purchasers will be asked to produce identification documentation at a later stage and we would ask for your co-operation in order that there is no delay in agreeing the sale. 2. These particulars do not constitute part or all of an offer or contract. 3. The measurements indicated are supplied for guidance only and as such must be considered incorrect. Potential buyers are advised to recheck measurements before committing to any expense. 4. We have not tested any apparatus, equipment, fixtures or services and it is in the buyers interest to check the working condition of any appliances. 5. Where an EPC, or a Home Report (Scotland only) is held for this property, it is available for inspection at the branch by appointment. If you require a printed version of a Home Report, you will need to pay a reasonable production charge reflecting printing and other costs. 6. We are not able to offer an opinion either written or verbal on the content of these reports and this must be obtained from your legal representative. 7. Whilst we take care in preparing these reports, a buyer should ensure that his/her legal representative confirms as soon as possible all matters relating to title including the extent and boundaries of the property and other important matters before exchange of contracts.

William H Brown is a trading name of Sequence (UK) Limited which is registered in England and Wales under company number 4268443, Registered Office is Cumbria House, 16-20 Hockliffe Street, Leighton Buzzard, Bedfordshire, LU7 1GN. VAT Registration Number is 500 2481 05.


william h brown



01707 324361



WelwynGardenCity@williamhbrown.co.uk



53 Wigmores North, WELWYN GARDEN CITY,
Hertfordshire, AL8 6PG



williamhbrown.co.uk