



Washington Drive, Watton Thetford IP25 6GY

welcome to

Washington Drive, Watton Thetford

> > A three bedroom semi-detached home, situated in a popular development in the outskirts of Watton. Boasting three spacious bedrooms, lounge, kitchen/diner, modern fixtures and fittings, allocated parking, gas-fired central heating and a location situated close to local amenities and facilities!

The Accommodation

Part glazed external entrance door opening to:

Entrance Hall

Tiled flooring, staircase rising to the first floor accommodation, radiator, understairs storage.

Ground Floor Cloakroom

Suite comprising low level w.c, hand wash basin, radiator, UPVC double glazed window to rear aspect.

Lounge

17' 4" x 9' 5" (5.28m x 2.87m)

Carpet flooring, radiator, UPVC double glazed window to front aspect, UPVC double glazed french doors opening to rear garden.

Kitchen

15' 5" x 13' 2" max (4.70m x 4.01m max)

A range of wall and floor mounted fitted kitchen units with work surfaces over, sink and drainer, space for washing machine, fridge/freezer and dishwasher, gas hob with extractor over, electric oven, radiator, UPVC double glazed window to front aspect, UPVC double glazed french doors opening to rear garden.

First Floor Landing

Carpet flooring, radiator, storage cupboard, loft hatch access (part boarded).

Bedroom 1

12' x 9' 8" (3.66m x 2.95m)

Carpet flooring, radiator, UPVC double glazed window to front aspect.

En-Suite

Suite comprising low level w.c, hand wash basin,

shower cubicle, laminate flooring, UPVC double glazed window to rear aspect.

Bedroom 2

16' 2" x 8' 4" (4.93m x 2.54m)

Carpet flooring, radiator, UPVC double glazed window front aspect.

Bedroom 3

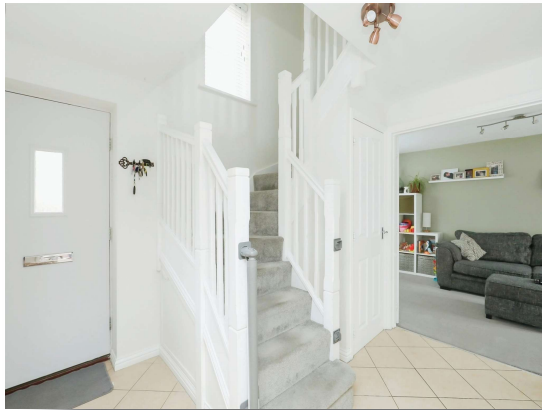
11' 3" x 6' 9" (3.43m x 2.06m)

Carpet flooring, radiator, UPVC double glazed window to rear aspect.

Family Bathroom

Suite comprising low level w.c, hand wash basin, panel bath, laminate flooring, UPVC double glazed window to rear aspect.





view this property online williamhbrown.co.uk/Property/WAT108251



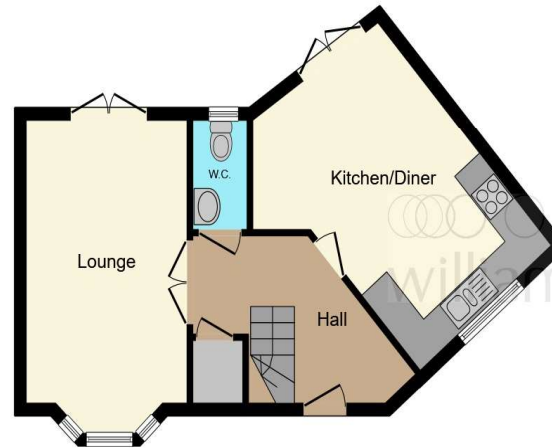
welcome to

Washington Drive, Watton Thetford

- Three bedroom semi-detached home
- Kitchen / Diner
- UPVC double glazed windows
- Gas-fired central heating
- Allocated parking

Tenure: Freehold EPC Rating: C

£210,000



Ground Floor



First Floor

This floor plan is for illustrative purposes only. It is not drawn to scale. Any measurements, floor areas (including any total floor area), openings and orientation are approximate. No details are guaranteed, they cannot be relied upon for any purpose and they do not form part of any agreement. No liability is taken for any error, omission or misstatement. A party must rely upon its own inspection(s). Powered by www.focalagent.com

view this property online williamhbrown.co.uk/Property/WAT108251



Property Ref:
WAT108251 - 0002

1. MONEY LAUNDERING REGULATIONS Intending purchasers will be asked to produce identification documentation at a later stage and we would ask for your co-operation in order that there is no delay in agreeing the sale. 2. These particulars do not constitute part or all of an offer or contract. 3. The measurements indicated are supplied for guidance only and as such must be considered incorrect. Potential buyers are advised to recheck measurements before committing to any expense. 4. We have not tested any apparatus, equipment, fixtures or services and it is in the buyers interest to check the working condition of any appliances. 5. Where an EPC, or a Home Report (Scotland only) is held for this property, it is available for inspection at the branch by appointment. If you require a printed version of a Home Report, you will need to pay a reasonable production charge reflecting printing and other costs. 6. We are not able to offer an opinion either written or verbal on the content of these reports and this must be obtained from your legal representative. 7. Whilst we take care in preparing these reports, a buyer should ensure that his/her legal representative confirms as soon as possible all matters relating to title including the extent and boundaries of the property and other important matters before exchange of contracts.

William H Brown is a trading name of Sequence (UK) Limited which is registered in England and Wales under company number 4268443, Registered Office is Cumbria House, 16-20 Hockliffe Street, Leighton Buzzard, Bedfordshire, LU7 1GN. VAT Registration Number is 500 2481 05.

 william h brown



01953 881951



Watton@williamhbrown.co.uk



9 High Street, Watton, THETFORD, Norfolk,
IP25 6AB



williamhbrown.co.uk