



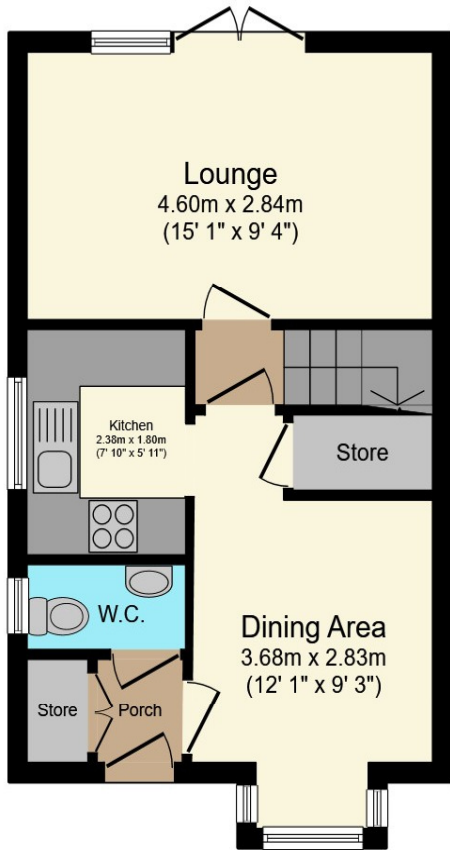
River Meads, Stanstead Abbotts Ware SG12 8EF

welcome to

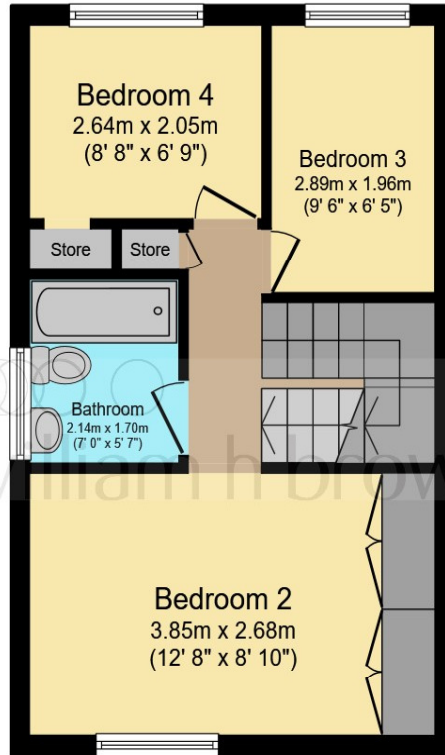
River Meads, Stanstead Abbots Ware

William H Brown are pleased to present this well-maintained four bedroom end-of-terrace house in River Meads, Stanstead Abbots, It boasts a desirable location next to the River Lea. With a tasteful loft conversion, the property features a spacious lounge and diner, a convenient downstairs W.C., and ample storage space. In good condition throughout, this home offers a comfortable and stylish living environment. Don't miss the opportunity to make this house in River Meads your new home.

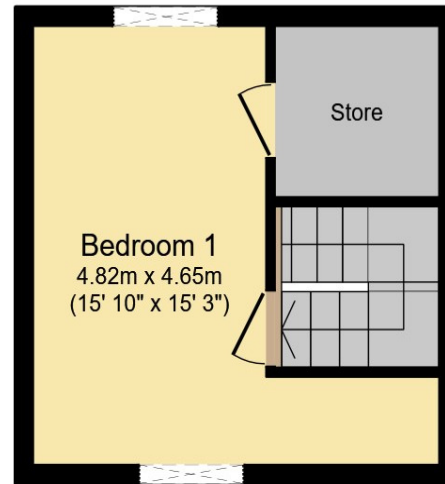




Ground Floor



First Floor



Second Floor

Lounge
13' 1" x 9' 4" (3.99m x 2.84m)

Kitchen
7' 9" x 5' 10" (2.36m x 1.78m)

Dining Room
8' 9" x 11' 9" extending to (2.67m x 3.58m extending to)

Bathroom
7' 6" x 5' 7" (2.29m x 1.70m)

Bedroom 4
8' 8" x 6' 8" (2.64m x 2.03m)

Bedroom 3
9' 3" x 6' 4" (2.82m x 1.93m)

Bedroom 2
12' 6" x 8' 9" (3.81m x 2.67m)

Bedroom 1
15' 10" x 15' 2" extending to (4.83m x 4.62m extending to)

Total floor area 91.4 sq.m. (984 sq.ft.) approx

This floorplan is for illustrative purposes only and is not drawn to scale. Measurements, floor-areas, openings and orientations are approximate. They should not be relied upon for any purpose and do not form any part of an agreement. No liability is taken for any error or mis-statement. All parties must rely on their own inspections.

welcome to

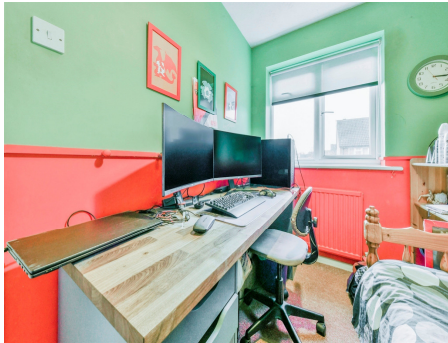
River Meads, Stanstead Abbots Ware

- Four bedroom end terrace family home
- Good sized living/dining area
- Downstairs WC
- Ample storage
- Loft Conversion

Tenure: Freehold EPC Rating: Awaited

offers in excess of

£435,000



view this property online williamhbrown.co.uk/Property/WRE105919

Please note the marker reflects the postcode not the actual property



Property Ref:
WRE105919 - 0003

1. MONEY LAUNDERING REGULATIONS Intending purchasers will be asked to produce identification documentation at a later stage and we would ask for your co-operation in order that there is no delay in agreeing the sale. 2. These particulars do not constitute part or all of an offer or contract. 3. The measurements indicated are supplied for guidance only and as such must be considered incorrect. Potential buyers are advised to recheck measurements before committing to any expense. 4. We have not tested any apparatus, equipment, fixtures or services and it is in the buyers interest to check the working condition of any appliances. 5. Where an EPC, or a Home Report (Scotland only) is held for this property, it is available for inspection at the branch by appointment. If you require a printed version of a Home Report, you will need to pay a reasonable production charge reflecting printing and other costs. 6. We are not able to offer an opinion either written or verbal on the content of these reports and this must be obtained from your legal representative. 7. Whilst we take care in preparing these reports, a buyer should ensure that his/her legal representative confirms as soon as possible all matters relating to title including the extent and boundaries of the property and other important matters before exchange of contracts.



william h brown



01920 465411



Ware@williamhbrown.co.uk



80 High Street, WARE, Hertfordshire, SG12 9AT



williamhbrown.co.uk