



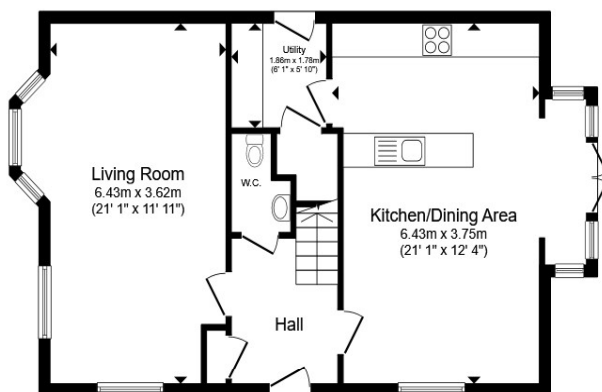
Alexandra Lane, Flockton Wakefield WF4 4FA

welcome to

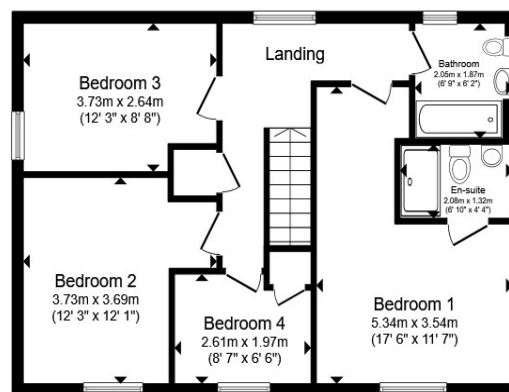
Alexandra Lane, Flockton Wakefield

Offers in excess of £375,000. This home is located well for schooling, m1 motorway access which is ideal for the commuter and local amenities. Viewings highly recommended to fully appreciate what this home has to offer.





Ground Floor



First Floor



Outbuilding

Total floor area 141.8 m² (1,526 sq.ft.) approx

This floor plan is for illustrative purposes only. It is not drawn to scale. Any measurements, floor areas (including any total floor area), openings and orientation are approximate. No details are guaranteed, they cannot be relied upon for any purpose and they do not form part of any agreement. No liability is taken for any error, omission or misstatement. A party must rely upon its own inspection(s). Powered by www.propertybox.io

Lounge

11' 10" max x 21' max (3.61m max x 6.40m max)

Kitchen

20' max x 15' max (6.10m max x 4.57m max)

Utility Room

5' 1" max x 6' max (1.55m max x 1.83m max)

Bedroom One

12' 4" max x 17' 6" max (3.76m max x 5.33m max)

Bedroom Two

12' max x 8' 1" max (3.66m max x 2.46m max)

Bedroom Three

12' max x 12' max (3.66m max x 3.66m max)

Bedroom Four

8' 1" max x 7' max (2.46m max x 2.13m max)

Bathroom

welcome to

Alexandra Lane, Flockton Wakefield

- Four bedroom detached
- Master en-suite
- Garden room
- Kitchen dining living
- Location

Tenure: Freehold EPC Rating: B
Council Tax Band: E

offers in excess of

£375,000



Please note the marker reflects the
postcode not the actual property

view this property online [williamhbrown.co.uk/Property/WAK127646](https://www.williamhbrown.co.uk/Property/WAK127646)



Property Ref:
WAK127646 - 0009

1. MONEY LAUNDERING REGULATIONS Intending purchasers will be asked to produce identification documentation at a later stage and we would ask for your co-operation in order that there is no delay in agreeing the sale. 2. These particulars do not constitute part or all of an offer or contract. 3. The measurements indicated are supplied for guidance only and as such must be considered incorrect. Potential buyers are advised to recheck measurements before committing to any expense. 4. We have not tested any apparatus, equipment, fixtures or services and it is in the buyers interest to check the working condition of any appliances. 5. Where an EPC, or a Home Report (Scotland only) is held for this property, it is available for inspection at the branch by appointment. If you require a printed version of a Home Report, you will need to pay a reasonable production charge reflecting printing and other costs. 6. We are not able to offer an opinion either written or verbal on the content of these reports and this must be obtained from your legal representative. 7. Whilst we take care in preparing these reports, a buyer should ensure that his/her legal representative confirms as soon as possible all matters relating to title including the extent and boundaries of the property and other important matters before exchange of contracts.

William H Brown is a trading name of Sequence (UK) Limited which is registered in England and Wales under company number 4268443, Registered Office is Cumbria House, 16-20 Hockliffe Street, Leighton Buzzard, Bedfordshire, LU7 1GN. VAT Registration Number is 500 2481 05.



william h brown



01924 381381



Wakefield@williamhbrown.co.uk



2 Wood Street, WAKEFIELD, West Yorkshire,
WF1 2ED



[williamhbrown.co.uk](https://www.williamhbrown.co.uk)