



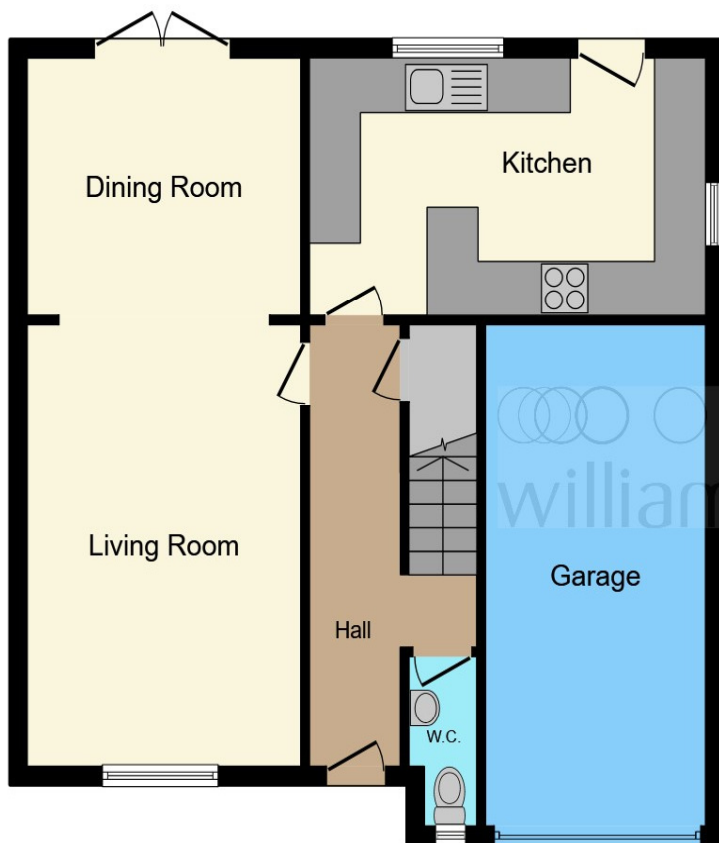
Ridings Way, Lofthouse Gate Wakefield WF3 3SJ

welcome to

Ridings Way, Lofthouse Gate Wakefield

Guide price £425,000-£450,000. An Immaculately and beautiful presented four bedroom detached family home situated in the highly sought after and popular residential development of Lofthouse not to be missed! Viewings highly recommended to fully appreciate what this home has to offer!





Ground Floor



First Floor

Lounge

10' 6" max x 15' 10" max (3.20m max x 4.83m max)

Kitchen

9' 2" max x 15' 4" max (2.79m max x 4.67m max)

Bedroom 1

13' 1" max x 10' 6" max (3.99m max x 3.20m max)

En Suite

Bedroom 2

10' 3" max x 15' 10" max (3.12m max x 4.83m max)

Bedroom 3

8' 2" max x 9' 3" max (2.49m max x 2.82m max)

Bedroom 4

9' 3" max x 9' 10" max (2.82m max x 3.00m max)

Bathroom

This floor plan is for illustrative purposes only. It is not drawn to scale. Any measurements, floor areas (including any total floor area), openings and orientation are approximate. No details are guaranteed, they cannot be relied upon for any purpose and they do not form part of any agreement. No liability is taken for any error, omission or misstatement. A party must rely upon its own inspection(s). Powered by www.focalagent.com

welcome to

Ridings Way, Lofthouse Gate Wakefield

- Four Bedroom Detached
- Master en-suite
- Driveway and garage
- Enclosed rear garden
- Two reception rooms

Tenure: Freehold EPC Rating: Awaited

guide price

£425,000



Please note the marker reflects the postcode not the actual property

view this property online williamhbrown.co.uk/Property/WAK123904



Property Ref:
WAK123904 - 0004

1. MONEY LAUNDERING REGULATIONS Intending purchasers will be asked to produce identification documentation at a later stage and we would ask for your co-operation in order that there is no delay in agreeing the sale. 2. These particulars do not constitute part or all of an offer or contract. 3. The measurements indicated are supplied for guidance only and as such must be considered incorrect. Potential buyers are advised to recheck measurements before committing to any expense. 4. We have not tested any apparatus, equipment, fixtures or services and it is in the buyers interest to check the working condition of any appliances. 5. Where an EPC, or a Home Report (Scotland only) is held for this property, it is available for inspection at the branch by appointment. If you require a printed version of a Home Report, you will need to pay a reasonable production charge reflecting printing and other costs. 6. We are not able to offer an opinion either written or verbal on the content of these reports and this must be obtained from your legal representative. 7. Whilst we take care in preparing these reports, a buyer should ensure that his/her legal representative confirms as soon as possible all matters relating to title including the extent and boundaries of the property and other important matters before exchange of contracts.

William H Brown is a trading name of Sequence (UK) Limited which is registered in England and Wales under company number 4268443, Registered Office is Cumbria House, 16-20 Hockliffe Street, Leighton Buzzard, Bedfordshire, LU7 1GN. VAT Registration Number is 500 2481 05.



william h brown



01924 381381



Wakefield@williamhbrown.co.uk



2 Wood Street, WAKEFIELD, West Yorkshire,
WF1 2ED



williamhbrown.co.uk