



**Church Street, Horbury Wakefield WF4 6LT**



**welcome to**

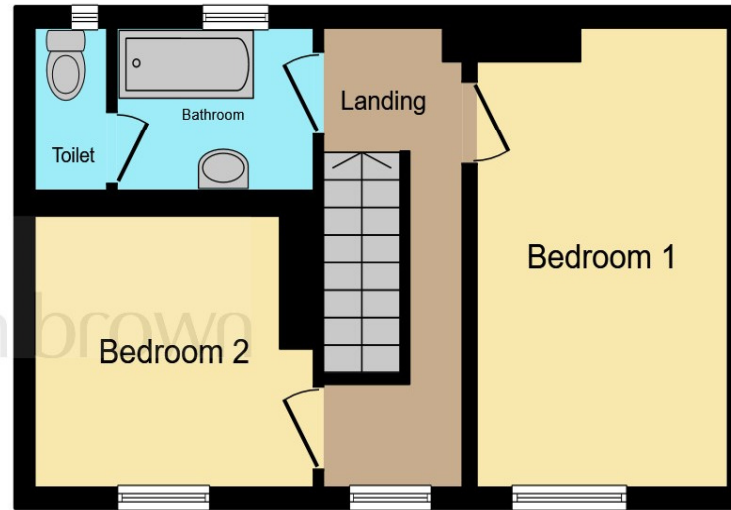
**Church Street, Horbury Wakefield**

Guide price £235,000 - £240,000 .A beautiful two double bedroom character cottage situated in the Highly desirable and sought after location of Horbury not to be missed!





**Ground Floor**



**First Floor**

## Entrance

## Living Room

14' 5" max x 14' 5" max ( 4.39m max x 4.39m max )

## Kitchen

10' 3" max x 15' 8" max ( 3.12m max x 4.78m max )

## First Floor Landing

## Bedroom 1

8' 9" max x 14' 3" max ( 2.67m max x 4.34m max )

## Bedroom 2

10' 4" max x 9' 2" max ( 3.15m max x 2.79m max )

## Bathroom

This floor plan is for illustrative purposes only. It is not drawn to scale. Any measurements, floor areas (including any total floor area), openings and orientation are approximate. No details are guaranteed, they cannot be relied upon for any purpose and they do not form part of any agreement. No liability is taken for any error, omission or misstatement. A party must rely upon its own inspection(s). Powered by [www.focalagent.com](http://www.focalagent.com)

welcome to

## Church Street, Horbury Wakefield

- Two double bedroom detached cottage
- Highly sought after location
- Enclosed rear garden
- Immaculately presented
- 

Tenure: Freehold EPC Rating: E  
Council Tax Band: C

guide price

**£235,000**



Please note the marker reflects the  
postcode not the actual property

**view this property online** [williamhbrown.co.uk/Property/WAK124858](https://williamhbrown.co.uk/Property/WAK124858)



Property Ref:  
WAK124858 - 0012

1. MONEY LAUNDERING REGULATIONS Intending purchasers will be asked to produce identification documentation at a later stage and we would ask for your co-operation in order that there is no delay in agreeing the sale. 2. These particulars do not constitute part or all of an offer or contract. 3. The measurements indicated are supplied for guidance only and as such must be considered incorrect. Potential buyers are advised to recheck measurements before committing to any expense. 4. We have not tested any apparatus, equipment, fixtures or services and it is in the buyers interest to check the working condition of any appliances. 5. Where an EPC, or a Home Report (Scotland only) is held for this property, it is available for inspection at the branch by appointment. If you require a printed version of a Home Report, you will need to pay a reasonable production charge reflecting printing and other costs. 6. We are not able to offer an opinion either written or verbal on the content of these reports and this must be obtained from your legal representative. 7. Whilst we take care in preparing these reports, a buyer should ensure that his/her legal representative confirms as soon as possible all matters relating to title including the extent and boundaries of the property and other important matters before exchange of contracts.

William H Brown is a trading name of Sequence (UK) Limited which is registered in England and Wales under company number 4268443, Registered Office is Cumbria House, 16-20 Hockliffe Street, Leighton Buzzard, Bedfordshire, LU7 1GN. VAT Registration Number is 500 2481 05.



william h brown



**01924 381381**



Wakefield@williamhbrown.co.uk



2 Wood Street, WAKEFIELD, West Yorkshire,  
WF1 2ED



**williamhbrown.co.uk**