



**Hatfield View, Wakefield WF1 3SN**

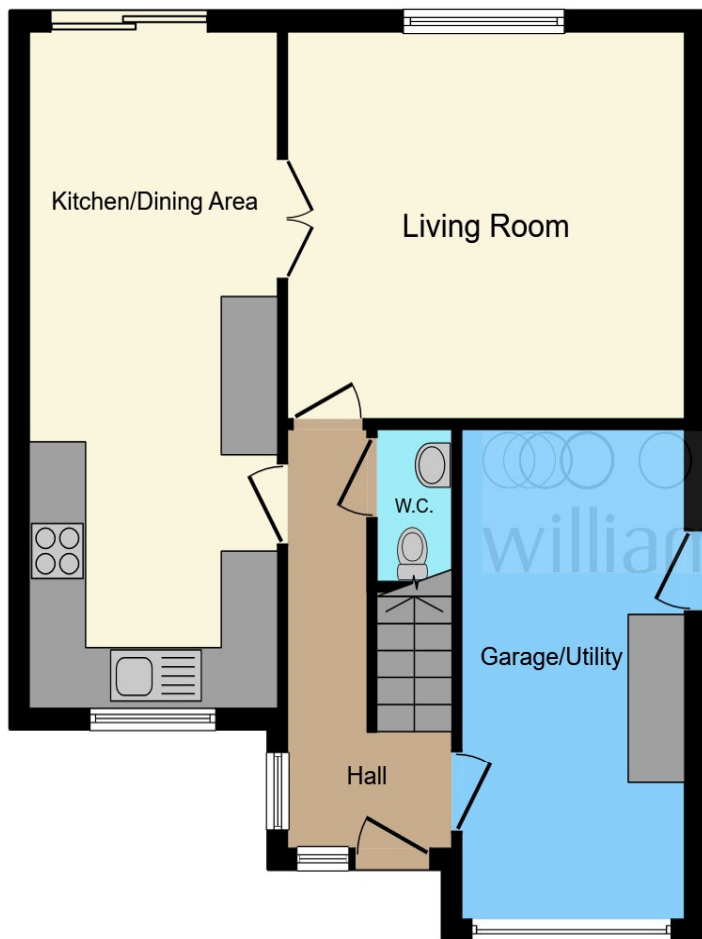


**welcome to**

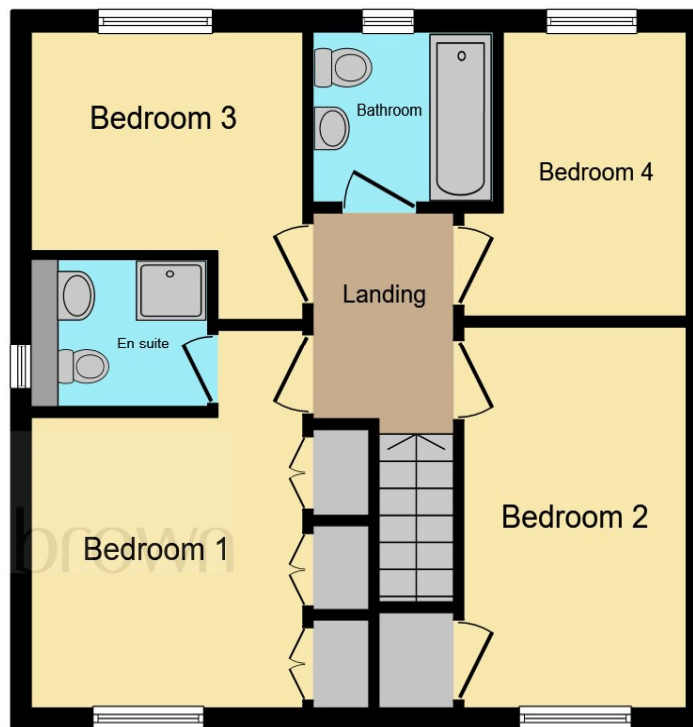
## **Hatfield View, Wakefield**

Guide Price £360,000-£370,000. A four bedroom detached family home situated in the highly popular and convenient location of wakefield not to be missed! Externally a driveway leading to the single integral garage which provides off road parking and enclosed, private rear garden. Viewings recommended.





**Ground Floor**



**First Floor**

## Entrance Hallway

## Living Room

12' 6" max x 14' 4" max ( 3.81m max x 4.37m max )

## Kitchen/ Dining Room

23' 3" max x 8' 5" max ( 7.09m max x 2.57m max )

## Downstairs W.C

## First Floor Landing

## Bedroom 1

9' max x 13' 7" max ( 2.74m max x 4.14m max )

## En Suite

## Bedroom 2

13' 4" max x 8' 3" max ( 4.06m max x 2.51m max )

## Bedroom 3

9' 9" max x 9' 4" max ( 2.97m max x 2.84m max )

## Bedroom 4

9' 2" max x 8' 8" max ( 2.79m max x 2.64m max )

## Family Bathroom

## Exterior

## Garage

This floor plan is for illustrative purposes only. It is not drawn to scale. Any measurements, floor areas (including any total floor area), openings and orientation are approximate. No details are guaranteed, they cannot be relied upon for any purpose and they do not form part of any agreement. No liability is taken for any error, omission or misstatement. A party must rely upon its own inspection(s). Powered by [www.focalagent.com](http://www.focalagent.com)

**welcome to**

## **Hatfield View, Wakefield**

- Guide Price £360,000-£370,000.
- Four Bedroom Detached
- Master with en-suite
- Garage and driveway
- Location

Tenure: Freehold EPC Rating: D

guide price

**£360,000**



Please note the marker reflects the  
postcode not the actual property

**view this property online** [williamhbrown.co.uk/Property/WAK126086](https://williamhbrown.co.uk/Property/WAK126086)



Property Ref:  
WAK126086 - 0009

1. MONEY LAUNDERING REGULATIONS Intending purchasers will be asked to produce identification documentation at a later stage and we would ask for your co-operation in order that there is no delay in agreeing the sale. 2. These particulars do not constitute part or all of an offer or contract. 3. The measurements indicated are supplied for guidance only and as such must be considered incorrect. Potential buyers are advised to recheck measurements before committing to any expense. 4. We have not tested any apparatus, equipment, fixtures or services and it is in the buyers interest to check the working condition of any appliances. 5. Where an EPC, or a Home Report (Scotland only) is held for this property, it is available for inspection at the branch by appointment. If you require a printed version of a Home Report, you will need to pay a reasonable production charge reflecting printing and other costs. 6. We are not able to offer an opinion either written or verbal on the content of these reports and this must be obtained from your legal representative. 7. Whilst we take care in preparing these reports, a buyer should ensure that his/her legal representative confirms as soon as possible all matters relating to title including the extent and boundaries of the property and other important matters before exchange of contracts.

William H Brown is a trading name of Sequence (UK) Limited which is registered in England and Wales under company number 4268443, Registered Office is Cumbria House, 16-20 Hockliffe Street, Leighton Buzzard, Bedfordshire, LU7 1GN. VAT Registration Number is 500 2481 05.



**william h brown**



**01924 381381**



[Wakefield@williamhbrown.co.uk](mailto:Wakefield@williamhbrown.co.uk)



2 Wood Street, WAKEFIELD, West Yorkshire,  
WF1 2ED



**[williamhbrown.co.uk](https://williamhbrown.co.uk)**