



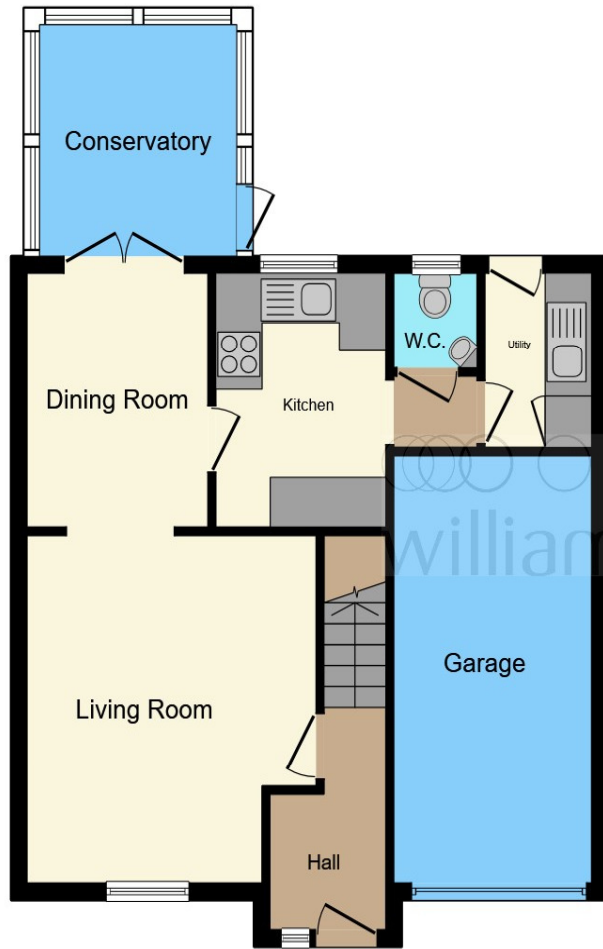
Hopewell Way, Crigglestone Wakefield WF4 3PU

welcome to

Hopewell Way, Crigglestone Wakefield

Guide price £325,000-£350,000. An Extended Four Bedroom Detached Family Home situated in the highly sought after and popular residential development in Crigglestone. This home has lots of space to offer which is ideal for a growing family and located with great access for schooling and transport links





Ground Floor



First Floor

Entrance

Living Room

12' 5" max x 14' 1" max (3.78m max x 4.29m max)

Dining Room

10' 5" max x 8' max (3.17m max x 2.44m max)

Kitchen

7' 3" max x 10' 5" max (2.21m max x 3.17m max)

Utility Room

4' 10" max x 7' 10" max (1.47m max x 2.39m max)

Conservatory

9' 9" max x 10' 4" max (2.97m max x 3.15m max)

First Floor Landing

Bedroom 1

9' 2" max x 16' max (2.79m max x 4.88m max)

En Suite

Bedroom 2

9' 1" max x 13' 9" max (2.77m max x 4.19m max)

Bedroom 3

11' 2" max x 9' 2" max (3.40m max x 2.79m max)

Bedroom 4

This floor plan is for illustrative purposes only. It is not drawn to scale. Any measurements, floor areas (including any total floor area), openings and orientation are approximate. No details are guaranteed, they cannot be relied upon for any purpose and they do not form part of any agreement. No liability is taken for any error, omission or misstatement. A party must rely upon its own inspection(s). Powered by www.focalagent.com

welcome to

Hopewell Way, Crigglestone Wakefield

- Guide price £325,000-£350,000
- Extended Four Bedroom Detached
- Garage and driveway
- Enclosed rear garden
- Sought after Location

Tenure: Freehold EPC Rating: D

guide price

£325,000



Please note the marker reflects the postcode not the actual property

view this property online williamhbrown.co.uk/Property/WAK126021



Property Ref:
WAK126021 - 0004

1. MONEY LAUNDERING REGULATIONS Intending purchasers will be asked to produce identification documentation at a later stage and we would ask for your co-operation in order that there is no delay in agreeing the sale. 2. These particulars do not constitute part or all of an offer or contract. 3. The measurements indicated are supplied for guidance only and as such must be considered incorrect. Potential buyers are advised to recheck measurements before committing to any expense. 4. We have not tested any apparatus, equipment, fixtures or services and it is in the buyers interest to check the working condition of any appliances. 5. Where an EPC, or a Home Report (Scotland only) is held for this property, it is available for inspection at the branch by appointment. If you require a printed version of a Home Report, you will need to pay a reasonable production charge reflecting printing and other costs. 6. We are not able to offer an opinion either written or verbal on the content of these reports and this must be obtained from your legal representative. 7. Whilst we take care in preparing these reports, a buyer should ensure that his/her legal representative confirms as soon as possible all matters relating to title including the extent and boundaries of the property and other important matters before exchange of contracts.

William H Brown is a trading name of Sequence (UK) Limited which is registered in England and Wales under company number 4268443, Registered Office is Cumbria House, 16-20 Hockliffe Street, Leighton Buzzard, Bedfordshire, LU7 1GN. VAT Registration Number is 500 2481 05.



william h brown



01924 381381



Wakefield@williamhbrown.co.uk



2 Wood Street, WAKEFIELD, West Yorkshire,
WF1 2ED



williamhbrown.co.uk