



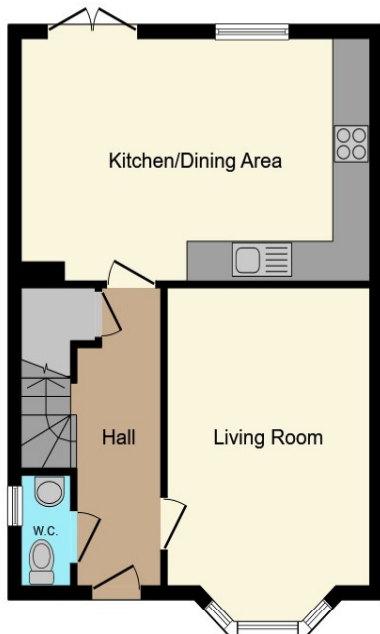
Johnson Road, Wakefield WF2 9BU

welcome to

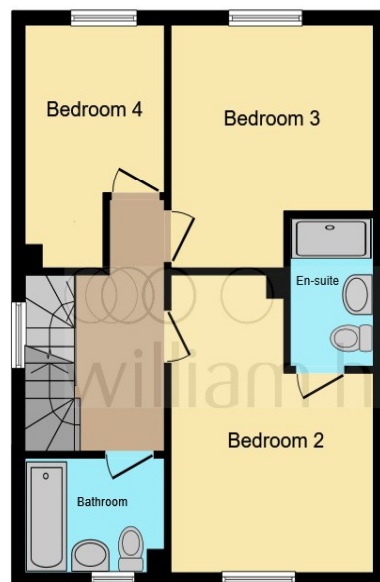
Johnson Road, Wakefield

Guide price £375,000-£400,000. A four double bedroom detached family home situated in the highly exquisite and popular residential location of wakefield. This family home is well located for motorway access links which is ideal for the commuter, schooling, transport links and local amenities.





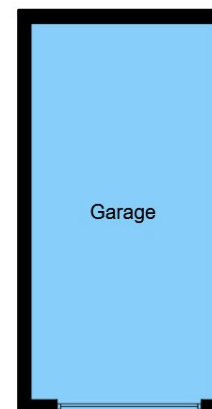
Ground Floor



First Floor



Second Floor



Garage

Entrance

Living Room

10' 9" max x 14' 9" max (3.28m max x 4.50m max)

Dining Room

18' 5" max x 12' max (5.61m max x 3.66m max)

Bedroom One

11' 6" max x 18' 10" max (3.51m max x 5.74m max)

En-Suite

Bedroom Two

11' max x 14' 9" max (3.35m max x 4.50m max)

En Suite

Bedroom Three

12' 1" max x 11' max (3.68m max x 3.35m max)

Bedroom Four

7' 2" max x 12' 1" max (2.18m max x 3.68m max)

Bathroom

This floor plan is for illustrative purposes only. It is not drawn to scale. Any measurements, floor areas (including any total floor area), openings and orientation are approximate. No details are guaranteed, they cannot be relied upon for any purpose and they do not form part of any agreement. No liability is taken for any error, omission or misstatement. A party must rely upon its own inspection(s). Powered by www.focalagent.com

welcome to

Johnson Road, Wakefield

- Guide price £375,000-£400,000
- Four Bedroom Detached
- Two bedrooms with en-suite
- Garage and drive
- Enclosed garden

Tenure: Freehold EPC Rating: B

guide price

£375,000



Please note the marker reflects the postcode not the actual property

view this property online williamhbrown.co.uk/Property/WAK123547



Property Ref:
WAK123547 - 0005

1. MONEY LAUNDERING REGULATIONS Intending purchasers will be asked to produce identification documentation at a later stage and we would ask for your co-operation in order that there is no delay in agreeing the sale. 2. These particulars do not constitute part or all of an offer or contract. 3. The measurements indicated are supplied for guidance only and as such must be considered incorrect. Potential buyers are advised to recheck measurements before committing to any expense. 4. We have not tested any apparatus, equipment, fixtures or services and it is in the buyers interest to check the working condition of any appliances. 5. Where an EPC, or a Home Report (Scotland only) is held for this property, it is available for inspection at the branch by appointment. If you require a printed version of a Home Report, you will need to pay a reasonable production charge reflecting printing and other costs. 6. We are not able to offer an opinion either written or verbal on the content of these reports and this must be obtained from your legal representative. 7. Whilst we take care in preparing these reports, a buyer should ensure that his/her legal representative confirms as soon as possible all matters relating to title including the extent and boundaries of the property and other important matters before exchange of contracts.

William H Brown is a trading name of Sequence (UK) Limited which is registered in England and Wales under company number 4268443, Registered Office is Cumbria House, 16-20 Hockliffe Street, Leighton Buzzard, Bedfordshire, LU7 1GN. VAT Registration Number is 500 2481 05.



william h brown



01924 381381



Wakefield@williamhbrown.co.uk



2 Wood Street, WAKEFIELD, West Yorkshire,
WF1 2ED



williamhbrown.co.uk