



**Thornes Road, Wakefield WF2 8QL**



**welcome to**

## **Thornes Road, Wakefield**

Rarely does such a property come onto the open market. Please contact the agent for further details. This stunning former The Stables home is a contemporary and modern home for the discerning buyer. Close to schools and motorway network links.

### **Open Plan**

#### **Living/Family Room**

20' 8" max x 20' 1" max ( 6.30m max x 6.12m max )

#### **Dining Kitchen**

22' 5" max x 17' 7" max ( 6.83m max x 5.36m max )

#### **2nd Reception Room**

15' 3" max x 13' 4" max ( 4.65m max x 4.06m max )

#### **Bedroom 1**

15' 9" max x 9' max ( 4.80m max x 2.74m max )

#### **Bedroom 2**

15' 3" max x 6' 9" max ( 4.65m max x 2.06m max )

#### **Bedroom 3**

13' 5" max x 7' 4" max ( 4.09m max x 2.24m max )

#### **Family Bathroom**

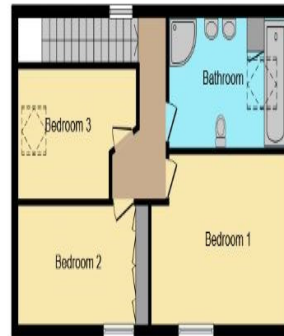
13' 2" max x 7' 2" max ( 4.01m max x 2.18m max )

#### **Exterior**

#### **Garage**



**Ground Floor**



**First Floor**

This floorplan is for illustrative purposes only and is not drawn to scale. Measurements, floor-areas, openings and orientations are approximate. They should not be relied upon for any purpose and do not form any part of an agreement. No liability is taken for any error or mis-statement. All parties must rely on their own inspections.

