



Ashdene Drive, Crofton Wakefield WF4 1PQ

welcome to

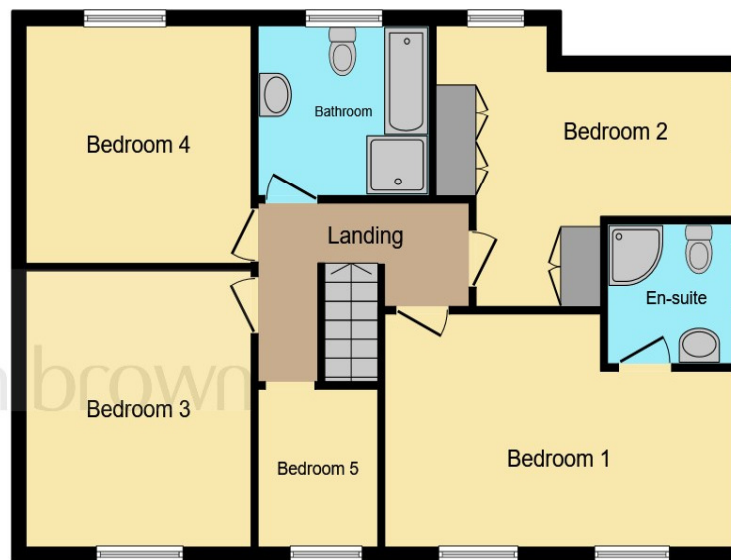
Ashdene Drive, Crofton Wakefield

This beautifully presented five-bedroom house offers an exciting home for the growing family in the popular residential area of Crofton! The principal bedroom has en-suite and there is an extensive living space downstairs.





Ground Floor



First Floor

Kitchen/Dining Room

23' 11" max x 15' 10" max (7.29m max x 4.83m max)

Living Room

25' 8" max x 10' 9" max (7.82m max x 3.28m max)

Bedroom One

10' 11" max x 17' 9" max (3.33m max x 5.41m max)

Bedroom Two

15' 11" max x 12' 3" max (4.85m max x 3.73m max)

Bedroom Three

10' 6" max x 11' 1" max (3.20m max x 3.38m max)

Bedroom Four

13' max x 10' 8" max (3.96m max x 3.25m max)

Bedroom Five

6' 2" max x 7' 8" max (1.88m max x 2.34m max)

Bathroom

Garage

17' 5" max x 8' 10" max (5.31m max x 2.69m max)

This floor plan is for illustrative purposes only. It is not drawn to scale. Any measurements, floor areas (including any total floor area), openings and orientation are approximate. No details are guaranteed, they cannot be relied upon for any purpose and they do not form part of any agreement. No liability is taken for any error, omission or misstatement. A party must rely upon its own inspection(s). Powered by www.focalagent.com

welcome to

Ashdene Drive, Crofton Wakefield

- Five-bedroom Detached family home
- Two Reception Rooms
- Utility Room
- En Suite
- Garage

Tenure: Freehold EPC Rating: C
Council Tax Band: D

offers in excess of

£400,000



Please note the marker reflects the
postcode not the actual property

view this property online williamhbrown.co.uk/Property/WAK124790



Property Ref:
WAK124790 - 0007

1. MONEY LAUNDERING REGULATIONS Intending purchasers will be asked to produce identification documentation at a later stage and we would ask for your co-operation in order that there is no delay in agreeing the sale. 2. These particulars do not constitute part or all of an offer or contract. 3. The measurements indicated are supplied for guidance only and as such must be considered incorrect. Potential buyers are advised to recheck measurements before committing to any expense. 4. We have not tested any apparatus, equipment, fixtures or services and it is in the buyers interest to check the working condition of any appliances. 5. Where an EPC, or a Home Report (Scotland only) is held for this property, it is available for inspection at the branch by appointment. If you require a printed version of a Home Report, you will need to pay a reasonable production charge reflecting printing and other costs. 6. We are not able to offer an opinion either written or verbal on the content of these reports and this must be obtained from your legal representative. 7. Whilst we take care in preparing these reports, a buyer should ensure that his/her legal representative confirms as soon as possible all matters relating to title including the extent and boundaries of the property and other important matters before exchange of contracts.

William H Brown is a trading name of Sequence (UK) Limited which is registered in England and Wales under company number 4268443, Registered Office is Cumbria House, 16-20 Hockliffe Street, Leighton Buzzard, Bedfordshire, LU7 1GN. VAT Registration Number is 500 2481 05.



william h brown



01924 381381



Wakefield@williamhbrown.co.uk



2 Wood Street, WAKEFIELD, West Yorkshire,
WF1 2ED



williamhbrown.co.uk