



**Castleford Road, Normanton WF6 1RQ**

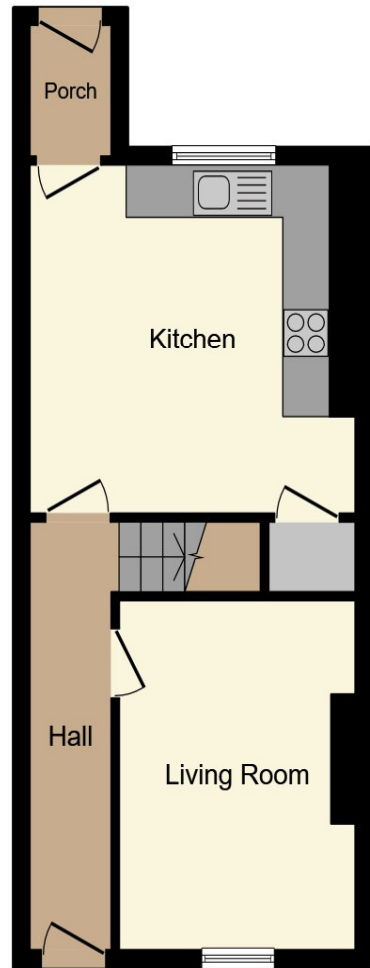


**welcome to**

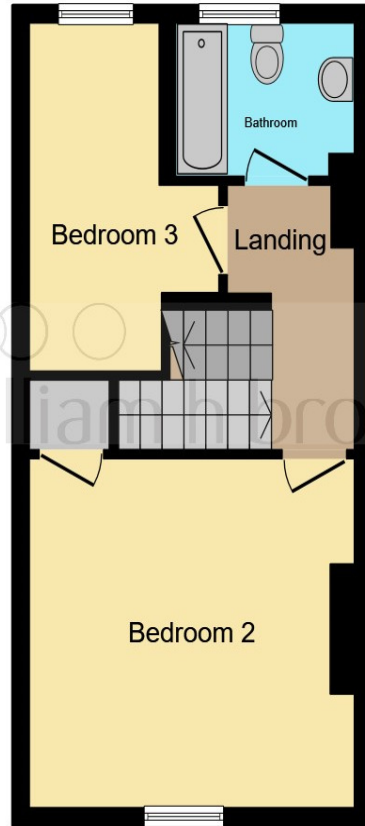
**Castleford Road, Normanton**

A three bedroom deceptively spacious mid terrace property situated in a convenient location of Normanton not to be missed.

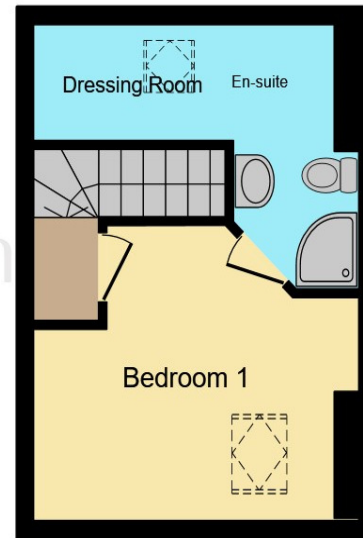




**Ground Floor**



**First Floor**



**Second Floor**

**Entrance**

**Lounge**

12' 8" max x 9' 7" max ( 3.86m max x 2.92m max )

**Kitchen**

13' 4" max x 13' max ( 4.06m max x 3.96m max )

**First Floor**

**Bedroom 1**

12' 1" max x 13' 2" max ( 3.68m max x 4.01m max )

**En Suite**

**Bedroom 2**

12' 6" max x 10' 10" max ( 3.81m max x 3.30m max )

**Bedroom 3**

12' 3" max x 7' 6" max ( 3.73m max x 2.29m max )

**Bathroom**

This floorplan is for illustrative purposes only and is not drawn to scale. Measurements, floor-areas, openings and orientations are approximate. They should not be relied upon for any purpose and do not form any part of an agreement. No liability is taken for any error or mis-statement. All parties must rely on their own inspections.

welcome to

## Castleford Road, Normanton

- Three bedroom mid terrace
- En suite to master
- No chain
- Kitchen diner
- Location

Tenure: Freehold EPC Rating: C

**£150,000**



**view this property online** [williamhbrown.co.uk/Property/WAK124513](http://williamhbrown.co.uk/Property/WAK124513)

Please note the marker reflects the postcode not the actual property



Property Ref:  
WAK124513 - 0003

1. MONEY LAUNDERING REGULATIONS Intending purchasers will be asked to produce identification documentation at a later stage and we would ask for your co-operation in order that there is no delay in agreeing the sale. 2. These particulars do not constitute part or all of an offer or contract. 3. The measurements indicated are supplied for guidance only and as such must be considered incorrect. Potential buyers are advised to recheck measurements before committing to any expense. 4. We have not tested any apparatus, equipment, fixtures or services and it is in the buyers interest to check the working condition of any appliances. 5. Where an EPC, or a Home Report (Scotland only) is held for this property, it is available for inspection at the branch by appointment. If you require a printed version of a Home Report, you will need to pay a reasonable production charge reflecting printing and other costs. 6. We are not able to offer an opinion either written or verbal on the content of these reports and this must be obtained from your legal representative. 7. Whilst we take care in preparing these reports, a buyer should ensure that his/her legal representative confirms as soon as possible all matters relating to title including the extent and boundaries of the property and other important matters before exchange of contracts.



william h brown



**01924 381381**



Wakefield@williamhbrown.co.uk



2 Wood Street, WAKEFIELD, West Yorkshire,  
WF1 2ED



**williamhbrown.co.uk**