



Anna Sewell Close, Thetford, IP24 1TN

welcome to

Anna Sewell Close, Thetford

A 3 bedroom TERRACE HOUSE with downstairs CLOAKROOM, large KITCHEN/DINER, enclosed REAR GARDEN and all situated within a favourable locality with close links to THETFORD ACADEMY! This property would make an ideal FAMILY HOME!



The Accommodation

Entrance door to:

Entrance Hall

With door to front and stairs to the first floor landing.

Cloakroom

With low level W.C and wash hand basin.

Lounge

15' 8" x 13' (4.78m x 3.96m)

With TV point, window to front and radiator.

Kitchen

13' x 12' 4" (3.96m x 3.76m)

With a range of fitted units with work surface over, space and plumbing for washing machine, double oven, built in storage cupboard, window to rear and radiator.

First Floor Landing

With access to the loft space and two built in storage cupboards.

Bedroom One

13' max. x 10' 8" max. (3.96m max. x 3.25m max.)

With built in wardrobe, window to rear and radiator.

Bedroom Two

13' x 9' (3.96m x 2.74m)

With window to front and radiator.

Bedroom Three

7' 10" x 6' 6" plus recess. (2.39m x 1.98m plus recess.)

With built in cupboard, window to front and radiator.

Bathroom

With low level W.C, wash hand basin, bath with shower head over and window to rear.

Outside

To the rear of the property is an enclosed garden which is largely lawned with a timber deck area and a garden shed.



check out more properties at williamhbrown.co.uk



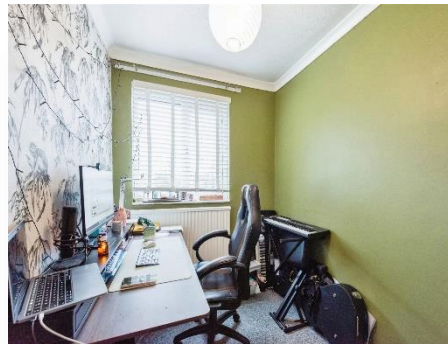
welcome to

Anna Sewell Close, Thetford

- Terrace House
- 3 bedrooms
- Sought after location
- Downstairs Cloakroom

Tenure: Freehold EPC Rating: C

£195,000



Please note the marker reflects the postcode not the actual property

check out more properties at williamhbrown.co.uk



Property Ref:
THF107486 - 0001

1. MONEY LAUNDERING REGULATIONS Intending purchasers will be asked to produce identification documentation at a later stage and we would ask for your co-operation in order that there is no delay in agreeing the sale. 2. These particulars do not constitute part or all of an offer or contract. 3. The measurements indicated are supplied for guidance only and as such must be considered incorrect. Potential buyers are advised to recheck measurements before committing to any expense. 4. We have not tested any apparatus, equipment, fixtures or services and it is in the buyers interest to check the working condition of any appliances. 5. Where an EPC, or a Home Report (Scotland only) is held for this property, it is available for inspection at the branch by appointment. If you require a printed version of a Home Report, you will need to pay a reasonable production charge reflecting printing and other costs. 6. We are not able to offer an opinion either written or verbal on the content of these reports and this must be obtained from your legal representative. 7. Whilst we take care in preparing these reports, a buyer should ensure that his/her legal representative confirms as soon as possible all matters relating to title including the extent and boundaries of the property and other important matters before exchange of contracts.

William H Brown is a trading name of Sequence (UK) Limited which is registered in England and Wales under company number 4268443, Registered Office is Cumbria House, 16-20 Hockliffe Street, Leighton Buzzard, Bedfordshire, LU7 1GN. VAT Registration Number is 500 2481 05.



william h brown



01842 753559



Thetford@williamhbrown.co.uk



47 King Street, THETFORD, Norfolk, IP24 2AU



williamhbrown.co.uk