



Latchmoor Park, Ludham, Great Yarmouth, NR29 5RA

welcome to

Latchmoor Park, Ludham, Great Yarmouth

A charming two bedroom Bungalow nestled in the picturesque village of Ludham, offering a peaceful retreat with a well-maintained garden and convenient parking. Perfect for those seeking a comfortable and tranquil lifestyle.



Description

Situated in a desirable village location, this delightful two-bedroom bungalow provides a welcoming and relaxed atmosphere in Ludham. The property features a garden, offering an inviting outdoor space for relaxation or entertaining. Inside, the bungalow boasts a comfortable layout, ideal for modern living, with well-proportioned rooms designed for both comfort and practicality.

With the added benefit of private parking, this home is perfect for those looking for a quiet yet well-connected setting. Whether enjoying the local community or retreating to the serenity of your own space, this bungalow offers the best of both worlds. Give us a call to arrange your viewing.

Front Exterior

To the front, this property has an excellent area laid to lawn and gravel along with a path leading to the property along with a driveway and garage.

Living Room

18' 4" x 10' 4" (5.59m x 3.15m)

The living room has carpeted flooring, two lots of double doors to the conservatory, a ceiling light and a radiator.

Kitchen

12' 11" Max x 7' 5" Max (3.94m Max x 2.26m Max)

The kitchen has matching base and wall units with worktop over. There is integrated electric oven and hob, space for a fridge/freezer, space and plumbing for a washing machine, a window to the front, a sink and drainer, a ceiling light and tiled splashback.

Conservatory

17' 8" x 8' 10" (5.38m x 2.69m)

The conservatory allows access to the fantastic garden along with having vinyl flooring, and wall lights.

Bedroom One

13' 4" Max x 9' 5" Max (4.06m Max x 2.87m Max)

The main bedroom has carpeted flooring, a window, a radiator and a ceiling light.

Bedroom Two

10' x 9' 5" (3.05m x 2.87m)

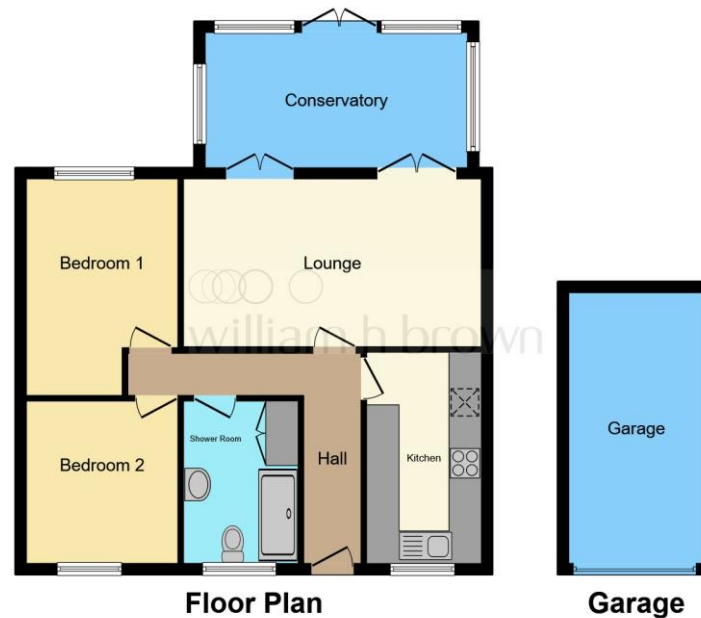
The second bedroom has carpeted flooring, a ceiling light, a window and a radiator.

Bathroom

The bathroom has tiled walls and flooring, a large shower, a sink and toilet, a radiator, a ceiling light and an airing cupboard with a water tank in.

Rear Exterior

To the rear, the garden has fencing surrounding, a patio area, gravel laid and sheds. There is a small pond towards the back along with the oil tank.



This floor plan is for illustrative purposes only. It is not drawn to scale. Any measurements, floor areas (including any total floor area), openings and orientation are approximate. No details are guaranteed, they cannot be relied upon for any purpose and they do not form part of any agreement. No liability is taken for any error, omission or misstatement. A party must rely upon its own inspection(s). Powered by www.focalagent.com



view this property online williamhbrown.co.uk/Property/NWS108356



welcome to

Latchmoor Park, Ludham, Great Yarmouth

- Desired Village Location
- Garage
- Conservatory
- Enclosed Rear Garden
- Walking Distance to Amenities

Tenure: Freehold EPC Rating: E
Council Tax Band: C

offers in excess of

£300,000



Please note the marker reflects the
postcode not the actual property

view this property online [williamhbrown.co.uk/Property/NWS108356](https://www.williamhbrown.co.uk/Property/NWS108356)



Property Ref:
NWS108356 - 0006

1. MONEY LAUNDERING REGULATIONS Intending purchasers will be asked to produce identification documentation at a later stage and we would ask for your co-operation in order that there is no delay in agreeing the sale. 2. These particulars do not constitute part or all of an offer or contract. 3. The measurements indicated are supplied for guidance only and as such must be considered incorrect. Potential buyers are advised to recheck measurements before committing to any expense. 4. We have not tested any apparatus, equipment, fixtures or services and it is in the buyers interest to check the working condition of any appliances. 5. Where an EPC, or a Home Report (Scotland only) is held for this property, it is available for inspection at the branch by appointment. If you require a printed version of a Home Report, you will need to pay a reasonable production charge reflecting printing and other costs. 6. We are not able to offer an opinion either written or verbal on the content of these reports and this must be obtained from your legal representative. 7. Whilst we take care in preparing these reports, a buyer should ensure that his/her legal representative confirms as soon as possible all matters relating to title including the extent and boundaries of the property and other important matters before exchange of contracts.

William H Brown is a trading name of Sequence (UK) Limited which is registered in England and Wales under company number 4268443, Registered Office is Cumbria House, 16-20 Hockliffe Street, Leighton Buzzard, Bedfordshire, LU7 1GN. VAT Registration Number is 500 2481 05.



william h brown



01692 581034



stalham@williamhbrown.co.uk



52 High Street, Stalham, NORWICH, Norfolk,
NR12 9AS



[williamhbrown.co.uk](https://www.williamhbrown.co.uk)