



Turners Crescent, Wainfleet Skegness PE24 4BG

welcome to

Turners Crescent, Wainfleet Skegness

3 BED DETACHED HOUSE OFFERING DRIVEWAY & GARDENS, LOCATED ONLY A SHORT DISTANCE FROM LOCAL AMENITIES SUCH AS SHOPS, PUBS, HAIRDRESSERS & SCHOOL. CALL THE OFFICE TODAY TO ARRANGE A VIEWING ...

Entrance

Entrance door leads into the Hallway which has a storage heater, understairs storage. Stairs leading to the first floor and doors into the following rooms:

Lounge

13' 10" x 11' 10" (4.22m x 3.61m)

Has a bay window to the front elevations, tv aerial, storage heater and doors opening into the Dining Room.

Dining Room

10' 4" x 9' 11" (3.15m x 3.02m)

Has a storage heater and sliding doors into the Conservatory.

Conservatory

13' x 11' 7" (3.96m x 3.53m)

Has windows to 3 elevations and a door leading to the rear garden.

Kitchen

10' 11" x 7' 11" (3.33m x 2.41m)

Comprising of wall, base and drawer units with worktop space over, sink, integrated dishwasher, integrated oven, hob and extractor, electric radiator, window to the rear and a door leading into:

Utility Room

8' 6" x 4' 7" Min (2.59m x 1.40m Min)

Has base and wall units with worktop space over, integrated fridge/freezer, integrated washing machine, storage heater, door to the rear and door into:

Wc

Comprising of WC, sink, heated towel rail & an opaque window.

Landing

Has a storage cupboard, loft hatch access and doors leading into the following rooms:

Bedroom 1

11' 10" x 11' 2" (3.61m x 3.40m)

Has a window, tv aerial & storage heater. There is a door leading into:

En-Suite

Comprising of a walk in shower, WC, sink, towel radiator and an opaque window.

Bedroom 2

10' 5" x 9' 11" (3.17m x 3.02m)

Has a window & storage heater.

Bedroom 3

7' 9" x 7' 1" (2.36m x 2.16m)

Has a window & electric panel heater.

Bathroom

Comprises of bath with shower over, sink, WC, extractor, electric shaver point, electric wall heater & an opaque window.

External

The front of the property offers a good sized lawned area with paved driveway which leads to the garage which has power and lighting. The rear is also mainly laid to lawn and also has a good sized patio area.





view this property online williamhbrown.co.uk/Property/SKG108701



welcome to

Turners Crescent, Wainfleet Skegness

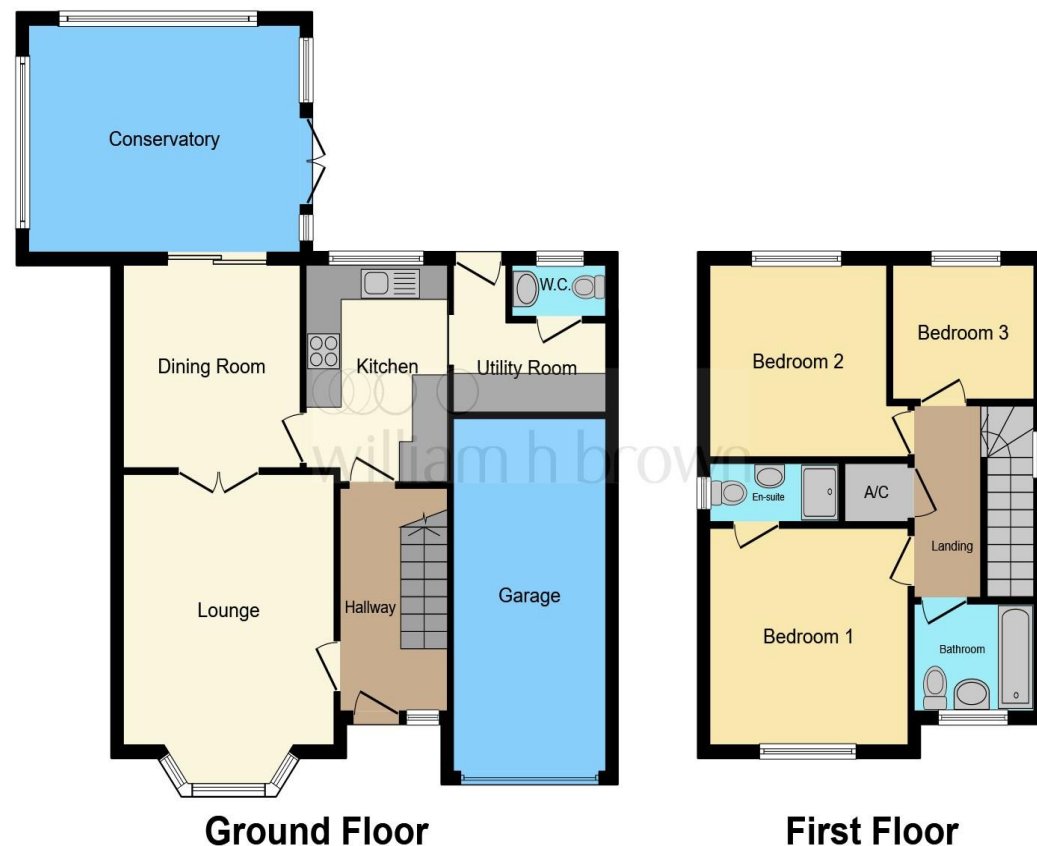
- 3 BEDROOM DETACHED HOUSE
- DRIVEWAY
- GARDEN
- MASTER WITH EN-SUITE
- CONSERVATORY

Tenure: Freehold EPC Rating: E

£270,000

directions to this property:

See Multi-Map Illustration



This floorplan is for illustrative purposes only and is not drawn to scale. Measurements, floor-areas, openings and orientations are approximate. They should not be relied upon for any purpose and do not form any part of an agreement. No liability is taken for any error or mis-statement. All parties must rely on their own inspections.

view this property online williamhbrown.co.uk/Property/SKG108701



Property Ref:
SKG108701 - 0005

1. MONEY LAUNDERING REGULATIONS Intending purchasers will be asked to produce identification documentation at a later stage and we would ask for your co-operation in order that there is no delay in agreeing the sale. 2. These particulars do not constitute part or all of an offer or contract. 3. The measurements indicated are supplied for guidance only and as such must be considered incorrect. Potential buyers are advised to recheck measurements before committing to any expense. 4. We have not tested any apparatus, equipment, fixtures or services and it is in the buyers interest to check the working condition of any appliances. 5. Where an EPC, or a Home Report (Scotland only) is held for this property, it is available for inspection at the branch by appointment. If you require a printed version of a Home Report, you will need to pay a reasonable production charge reflecting printing and other costs. 6. We are not able to offer an opinion either written or verbal on the content of these reports and this must be obtained from your legal representative. 7. Whilst we take care in preparing these reports, a buyer should ensure that his/her legal representative confirms as soon as possible all matters relating to title including the extent and boundaries of the property and other important matters before exchange of contracts.

William H Brown is a trading name of Sequence (UK) Limited which is registered in England and Wales under company number 4268443, Registered Office is Cumbria House, 16-20 Hockliffe Street, Leighton Buzzard, Bedfordshire, LU7 1GN. VAT Registration Number is 500 2481 05.


william h brown



01754 768311



Skegness@williamhbrown.co.uk



20 Roman Bank, SKEGNESS, Lincolnshire, PE25 2RU



williamhbrown.co.uk