



**Clovermead, Yetminster, Sherborne, DT9 6LR**

**welcome to**

**Clovermead, Yetminster, Sherborne**

A two bedroom semi detached bungalow, offered for sale with no onward chain, situated in the charming Dorset village of Yetminster. The accommodation has recently been renovated to a high standard throughout boasting a wealth of space and natural light.



### Entrance

Double glazed door to the front, opening into:

### Entrance Hall

Storage cupboard. Access to the loft space. Radiator.

### Living Accommodation

26' 7" x 10' 3" ( 8.10m x 3.12m )

A lovely light and open plan living area with two double glazed windows to the rear. The living room area has carpet flooring with aerial point and radiator. The kitchen/diner offers a range of recently fitted base and drawer units with work surface. Single bowl stainless steel sink and drainer with mixer tap. Space for free standing cooker with cooker hood over and stainless steel splashback. Plumbing for washing machine. Space for fridge/freezer. Space for dining table and chairs. Parquet flooring. Radiator. Double glazed French doors to the rear opening into:

### Conservatory

8' 4" x 7' 9" ( 2.54m x 2.36m )

Double glazed windows to the rear and sides. Double glazed French doors to the rear opening to the garden. Continued parquet flooring. Great additional space for a dining room, office space or playroom.

### Bedroom One

11' 8" x 9' 3" ( 3.56m x 2.82m )

Double glazed window to the front. Space for free standing furniture. Aerial point. Radiator.

### Bedroom Two

11' 8" x 7' 1" ( 3.56m x 2.16m )

Double glazed window to the front. Space for free standing furniture. Radiator.

### Bathroom

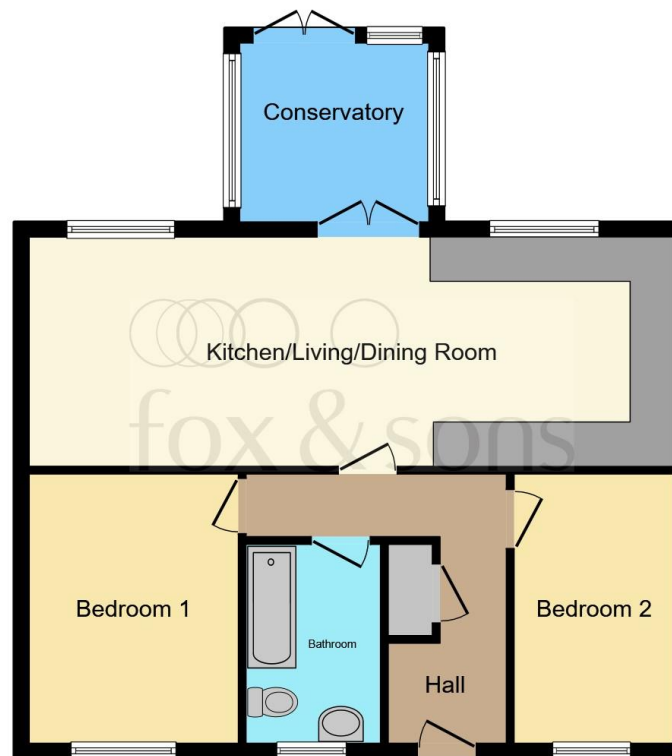
Double glazed window to the front. Recently fitted suite comprising enclosed bath with mixer tap and shower over. Wash hand basin inset to vanity unit. WC. Towel radiator.

### Front Garden

Access via a tarmac driveway, providing off road parking. To the other side of the property, is an additional good size shingle area with gated side access to the rear garden.

### Rear Garden

A fully enclosed rear garden, laid to paving and shingle, for low maintenance and providing an ideal seating/entertaining area to enjoy the summer sunshine. Outside brick built store with power and lighting.



This floor plan is for illustrative purposes only. It is not drawn to scale. Any measurements, floor areas (including any total floor area), openings and orientation are approximate. No details are guaranteed, they cannot be relied upon for any purpose and they do not form part of any agreement. No liability is taken for any error, omission or misstatement. A party must rely upon its own inspection(s). Powered by [www.focalagent.com](http://www.focalagent.com)



**view this property online** [fox-and-sons.co.uk/Property/YEO108204](http://fox-and-sons.co.uk/Property/YEO108204)



welcome to

## Clovermead, Yetminster, Sherborne

- Semi Detached Bungalow
- Two Double Bedrooms
- Recently Renovated to a High Standard
- Light & Spacious Living Accommodation
- Driveway Parking

Tenure: Freehold EPC Rating: D

**£250,000**



Please note the marker reflects the postcode not the actual property

**view this property online** [fox-and-sons.co.uk/Property/YEO108204](https://fox-and-sons.co.uk/Property/YEO108204)



Property Ref:  
YEO108204 - 0004

1. MONEY LAUNDERING REGULATIONS Intending purchasers will be asked to produce identification documentation at a later stage and we would ask for your co-operation in order that there is no delay in agreeing the sale. 2. These particulars do not constitute part or all of an offer or contract. 3. The measurements indicated are supplied for guidance only and as such must be considered incorrect. Potential buyers are advised to recheck measurements before committing to any expense. 4. We have not tested any apparatus, equipment, fixtures or services and it is in the buyers interest to check the working condition of any appliances. 5. Where an EPC, or a Home Report (Scotland only) is held for this property, it is available for inspection at the branch by appointment. If you require a printed version of a Home Report, you will need to pay a reasonable production charge reflecting printing and other costs. 6. We are not able to offer an opinion either written or verbal on the content of these reports and this must be obtained from your legal representative. 7. Whilst we take care in preparing these reports, a buyer should ensure that his/her legal representative confirms as soon as possible all matters relating to title including the extent and boundaries of the property and other important matters before exchange of contracts.

Fox & Sons is a trading name of Sequence (UK) Limited which is registered in England and Wales under company number 4268443, Registered Office is Cumbria House, 16-20 Hockliffe Street, Leighton Buzzard, Bedfordshire, LU7 1GN. VAT Registration Number is 500 2481 05.

  
fox & sons



**01935 412100**



[Yeovil@fox-and-sons.co.uk](mailto:Yeovil@fox-and-sons.co.uk)



14 Princes Street, YEOVIL, Somerset, BA20 1EW



**[fox-and-sons.co.uk](https://fox-and-sons.co.uk)**