



Sweeting Close, Creech St. Michael TAUNTON TA3 5FB

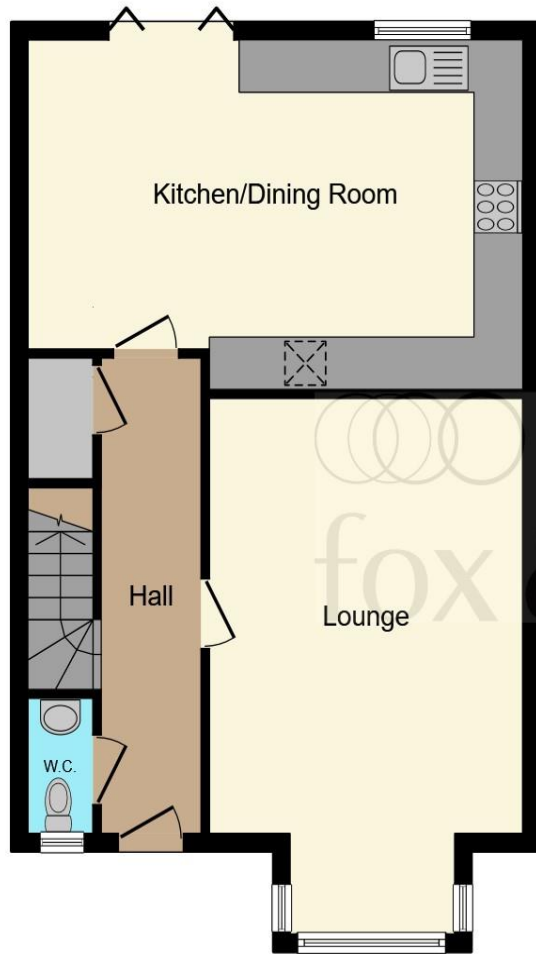


welcome to

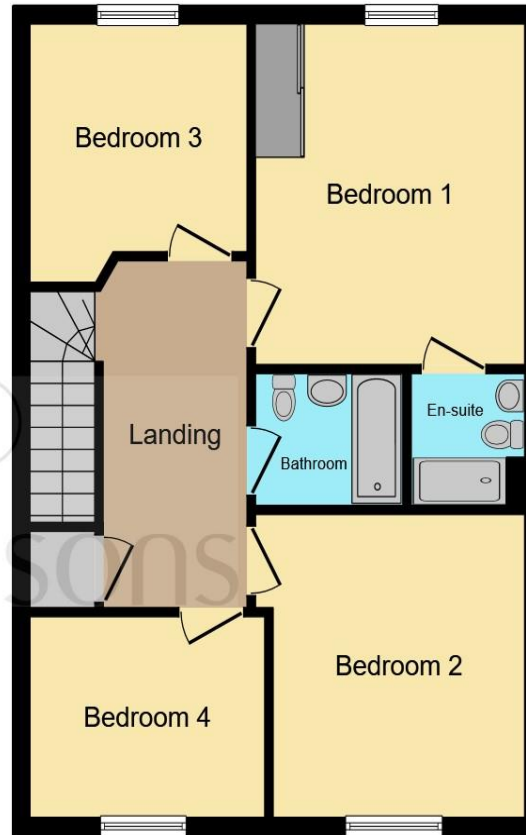
Sweeting Close, Creech St. Michael TAUNTON

A stunning FOUR BEDROOM, DETACHED family home in the DESIRABLE VILLAGE of Creech St Michael. The accommodation is WELL-PRESENTED throughout, and benefits from a DOUBLE GARAGE, AMPLE DRIVEWAY parking, and a SOUTH FACING GARDEN. What's more, this home is offered with NO CHAIN!





Ground Floor



First Floor

Total floor area 112.7 m² (1,213 sq.ft.) approx

This floor plan is for illustrative purposes only. It is not drawn to scale. Any measurements, floor areas (including any total floor area), openings and orientation are approximate. No details are guaranteed, they cannot be relied upon for any purpose and they do not form part of any agreement. No liability is taken for any error, omission or misstatement. A party must rely upon its own inspection(s). Powered by www.focalagent.com

Entrance Hall

Wc

Lounge

16' 4" Max x 12' 7" Max (4.98m Max x 3.84m Max)

Kitchen/Diner

20' 2" Max x 14' 2" Max (6.15m Max x 4.32m Max)

Landing

Bedroom 1

12' 6" Max x 10' 10" Max (3.81m Max x 3.30m Max)

Ensuite Bathroom

Bedroom 2

11' 1" Max x 10' 7" Max (3.38m Max x 3.23m Max)

Bedroom 3

9' 9" Max x 8' 11" Max (2.97m Max x 2.72m Max)

Bedroom 4

9' 1" Max x 7' 6" Max (2.77m Max x 2.29m Max)

Family Bathroom

Garage

20' 3" Max x 20' Max (6.17m Max x 6.10m Max)

Rear Garden

welcome to

Sweeting Close, Creech St. Michael TAUNTON

- NO ONWARD CHAIN!
- South Facing Rear Garden
- Double Garage
- Close Proximity to M5 Motorway
- Ensuite Bathroom to Master Bedroom

Tenure: Freehold EPC Rating: B

£375,000



Please note the marker reflects the postcode not the actual property

view this property online fox-and-sons.co.uk/Property/TAU108385



Property Ref:
TAU108385 - 0005

1. MONEY LAUNDERING REGULATIONS Intending purchasers will be asked to produce identification documentation at a later stage and we would ask for your co-operation in order that there is no delay in agreeing the sale. 2. These particulars do not constitute part or all of an offer or contract. 3. The measurements indicated are supplied for guidance only and as such must be considered incorrect. Potential buyers are advised to recheck measurements before committing to any expense. 4. We have not tested any apparatus, equipment, fixtures or services and it is in the buyers interest to check the working condition of any appliances. 5. Where an EPC, or a Home Report (Scotland only) is held for this property, it is available for inspection at the branch by appointment. If you require a printed version of a Home Report, you will need to pay a reasonable production charge reflecting printing and other costs. 6. We are not able to offer an opinion either written or verbal on the content of these reports and this must be obtained from your legal representative. 7. Whilst we take care in preparing these reports, a buyer should ensure that his/her legal representative confirms as soon as possible all matters relating to title including the extent and boundaries of the property and other important matters before exchange of contracts.

Fox & Sons is a trading name of Sequence (UK) Limited which is registered in England and Wales under company number 4268443, Registered Office is Cumbria House, 16-20 Hockliffe Street, Leighton Buzzard, Bedfordshire, LU7 1GN. VAT Registration Number is 500 2481 05.

fox & sons



01823 286161



taunton@fox-and-sons.co.uk



52 East Street, TAUNTON, Somerset, TA1 3NA



fox-and-sons.co.uk