



Plymouth Road, Plympton Plymouth PL7 4NB

welcome to

Plymouth Road, Plympton Plymouth

*** NO CHAIN ***

A fantastic opportunity to purchase this IMPRESSIVE 1930s semi-detached home boasting externally a GARAGE and DRIVEWAY for two vehicles and front and rear GARDENS. Internally the property benefits from a MODERN kitchen, a spacious CONSERVATORY with a downstairs WC and SHOWER ROOM.



Entrance Hall

Doors to the dining room, lounge and stairs to the first floor with a radiator.

Lounge

Fireplace with surround, two radiators and double glazed window to front elevation.

Dining Room

Feature log burner, double glazed window to front elevation, radiator and opening through to the kitchen with a door to the conservatory.

Kitchen

A modern white gloss wall and base unit kitchen with an integrated fridge freezer and dishwasher and the dishwasher is to be included.

Conservatory

Double glazed surround and roof with a door to the shower room and rear garden. With underfloor heating.

Shower Room

Accessed from the conservatory, offering a downstairs WC, shower cubicle, pedestal sink and extractor fan. With underfloor heating.

First Floor Landing

Access to all three bedrooms, bathroom and loft access.

Bedroom 1

Double glazed window to front elevation, fitted wardrobe and radiator.

Bedroom 2

Double glazed window to front elevation, fitted wardrobe and radiator.

Bedroom 3

Double glazed window to rear elevation, fitted wardrobe and radiator.

Bathroom

A spacious four piece suite with a Jacuzzi bath, mains shower cubicle, pedestal sink and vanity WC unit, towel radiator and a double glazed obscure window to rear elevation.

Loft Space

A drop down ladder, up to a part boarded and insulated loft space with two Velux windows and a loft mounted PIV whole house ventilation system.

Front Garden

A level lawned front garden with a path leading to the front door.

Rear Garden

An enclosed rear garden with steps down from the driveway to lawn and a path leading to the conservatory.

Garage

Electric up and over garage door.



view this property online fox-and-sons.co.uk/Property/PYP104501



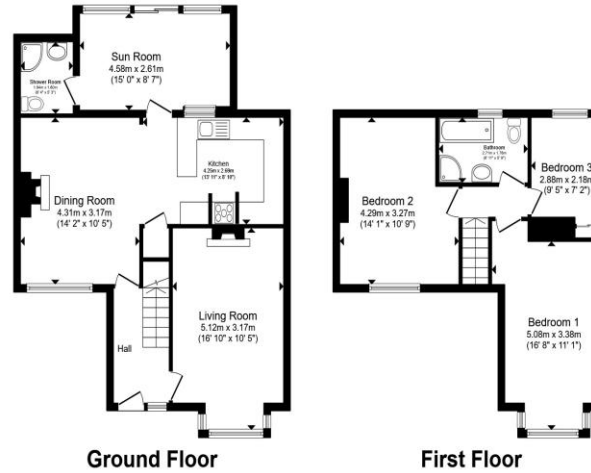
welcome to

Plymouth Road, Plympton Plymouth

- Impressive 1930s Home
- Driveway For Two Vehicles
- Loft Mounted PIV Whole House Ventilation System
- Garage
- Front & Rear Gardens

Tenure: Freehold EPC Rating: D
Council Tax Band: C

offers in the region of
£330,000



Total floor area 117.2 m² (1,262 sq.ft.) approx

This floor plan is for illustrative purposes only. It is not drawn to scale. Any measurements, floor areas (including any total floor area), openings and orientation are approximate. No details are guaranteed, they cannot be relied upon for any purpose and they do not form part of any agreement. No liability is taken for any error, omission or misstatement. A party must rely upon its own inspection(s). Powered by www.propertybox.io

fox & sons



Please note the marker reflects the
postcode not the actual property

view this property online fox-and-sons.co.uk/Property/PYP104501



Property Ref:
PYP104501 - 0004

1. MONEY LAUNDERING REGULATIONS Intending purchasers will be asked to produce identification documentation at a later stage and we would ask for your co-operation in order that there is no delay in agreeing the sale. 2. These particulars do not constitute part or all of an offer or contract. 3. The measurements indicated are supplied for guidance only and as such must be considered incorrect. Potential buyers are advised to recheck measurements before committing to any expense. 4. We have not tested any apparatus, equipment, fixtures or services and it is in the buyers interest to check the working condition of any appliances. 5. Where an EPC, or a Home Report (Scotland only) is held for this property, it is available for inspection at the branch by appointment. If you require a printed version of a Home Report, you will need to pay a reasonable production charge reflecting printing and other costs. 6. We are not able to offer an opinion either written or verbal on the content of these reports and this must be obtained from your legal representative. 7. Whilst we take care in preparing these reports, a buyer should ensure that his/her legal representative confirms as soon as possible all matters relating to title including the extent and boundaries of the property and other important matters before exchange of contracts.

fox & sons



01752 344349



plympton@fox-and-sons.co.uk



143 Ridgeway, Plympton, PLYMOUTH, Devon,
PL7 2HJ



fox-and-sons.co.uk