



Sunnydale Close, Ivybridge PL21 9FZ

welcome to

Sunnydale Close, Ivybridge

This modern semi-detached eco-home built in 2019 is situated in a cul de sac in Ivybridge. This 3 bedroom home's living areas are light and airy, with spacious kitchen diner and large lounge with 3 w/c's! Outside is a rear garden with very large garage, driveway and boasting a heat recovery system.



Lounge

18' 4" x 9' 6" (5.59m x 2.90m)

Kitchen/Diner

13' 5" x 10' 2" (4.09m x 3.10m)

Bedroom One

12' 6" x 11' 6" (3.81m x 3.51m)

Bedroom Two

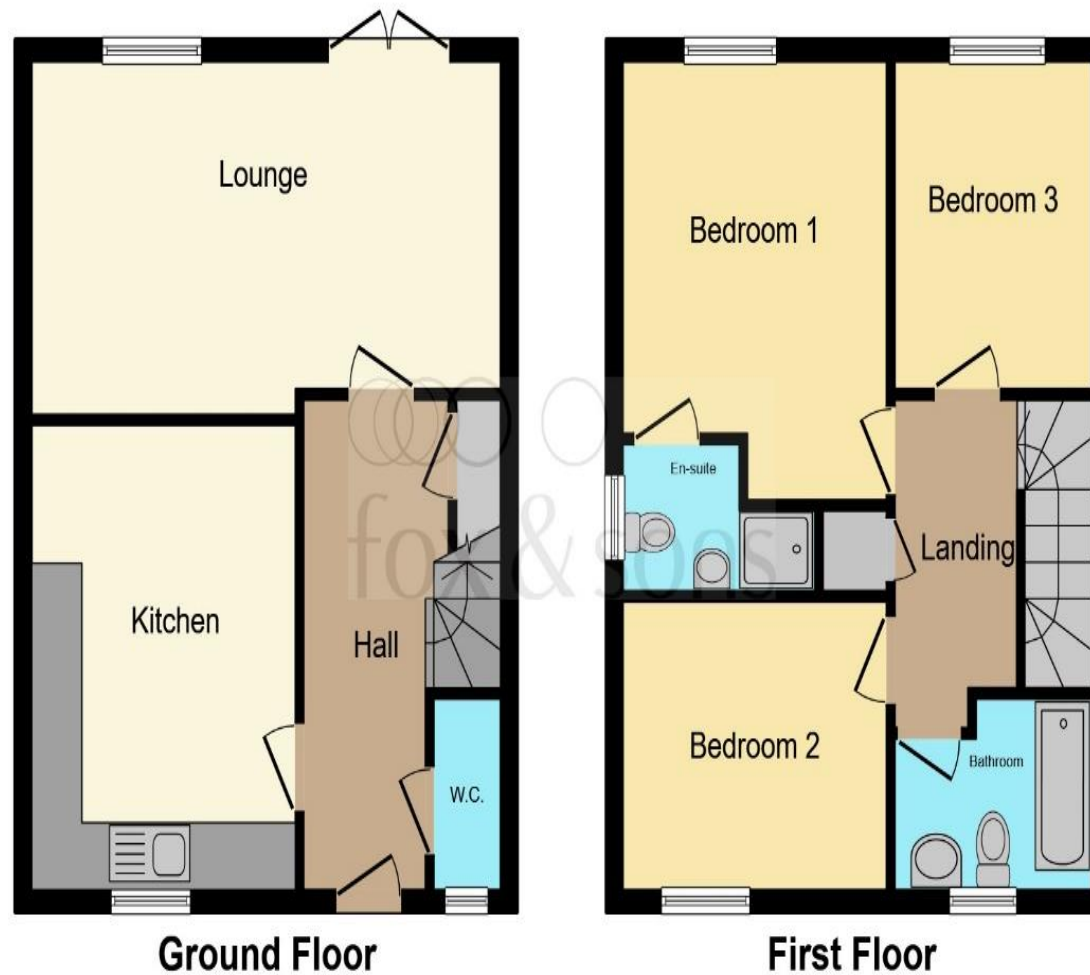
10' 2" x 8' 6" (3.10m x 2.59m)

Bedroom Three

9' 10" x 7' 10" (3.00m x 2.39m)

Garage

22' 8" x 9' 10" (6.91m x 3.00m)

Rear Garden

This floor plan is for illustrative purposes only. It is not drawn to scale. Any measurements, floor areas (including any total floor area), openings and orientation are approximate. No details are guaranteed, they cannot be relied upon for any purpose and they do not form part of any agreement. No liability is taken for any error, omission or misstatement. A party must rely upon its own inspection(s). Powered by www.focalagent.com



view this property online fox-and-sons.co.uk/Property/PYP103961



welcome to

Sunnydale Close, Ivybridge

- Modern built eco-home with Heat Recovery System
- Council Tax Band C
- Sought After Location in a cul-de-sac
- Three Bedrooms
- Two Bathrooms & Three WC's

Tenure: Freehold EPC Rating: B

guide price

£290,000



Please note the marker reflects the postcode not the actual property

view this property online fox-and-sons.co.uk/Property/PYP103961



Property Ref:
PYP103961 - 0002

1. MONEY LAUNDERING REGULATIONS Intending purchasers will be asked to produce identification documentation at a later stage and we would ask for your co-operation in order that there is no delay in agreeing the sale. 2. These particulars do not constitute part or all of an offer or contract. 3. The measurements indicated are supplied for guidance only and as such must be considered incorrect. Potential buyers are advised to recheck measurements before committing to any expense. 4. We have not tested any apparatus, equipment, fixtures or services and it is in the buyers interest to check the working condition of any appliances. 5. Where an EPC, or a Home Report (Scotland only) is held for this property, it is available for inspection at the branch by appointment. If you require a printed version of a Home Report, you will need to pay a reasonable production charge reflecting printing and other costs. 6. We are not able to offer an opinion either written or verbal on the content of these reports and this must be obtained from your legal representative. 7. Whilst we take care in preparing these reports, a buyer should ensure that his/her legal representative confirms as soon as possible all matters relating to title including the extent and boundaries of the property and other important matters before exchange of contracts.

Fox & Sons is a trading name of Sequence (UK) Limited which is registered in England and Wales under company number 4268443, Registered Office is Cumbria House, 16-20 Hockliffe Street, Leighton Buzzard, Bedfordshire, LU7 1GN. VAT Registration Number is 500 2481 05.


fox & sons



01752 344349



plympton@fox-and-sons.co.uk



143 Ridgeway, Plympton, PLYMOUTH, Devon,
PL7 2HJ



fox-and-sons.co.uk